

U.S. PUBLIC LAND SURVEY MONUMENT RECORD - GRANT COUNTY, WI

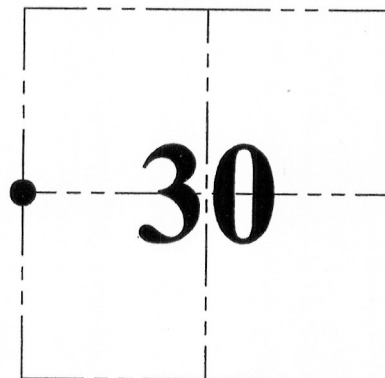
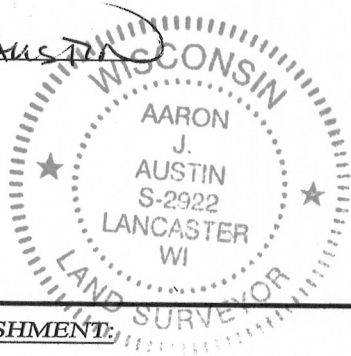
Section 30, Town 4 North Range 1 West, Town of Lima

CERTIFICATE:

I, Aaron J. Austin, do hereby certify that the corner location on this record was determined by me and/or under my direct supervision and that this U.S. Public Land Survey Monument Record is correct and complete to the best of my knowledge and belief.

Dated this 4 th day of MARCH, 2013.

Aaron J. Austin
 Aaron J. Austin, S-2922



● = CORNER LOCATION

HISTORY OF CORNER ESTABLISHMENT:

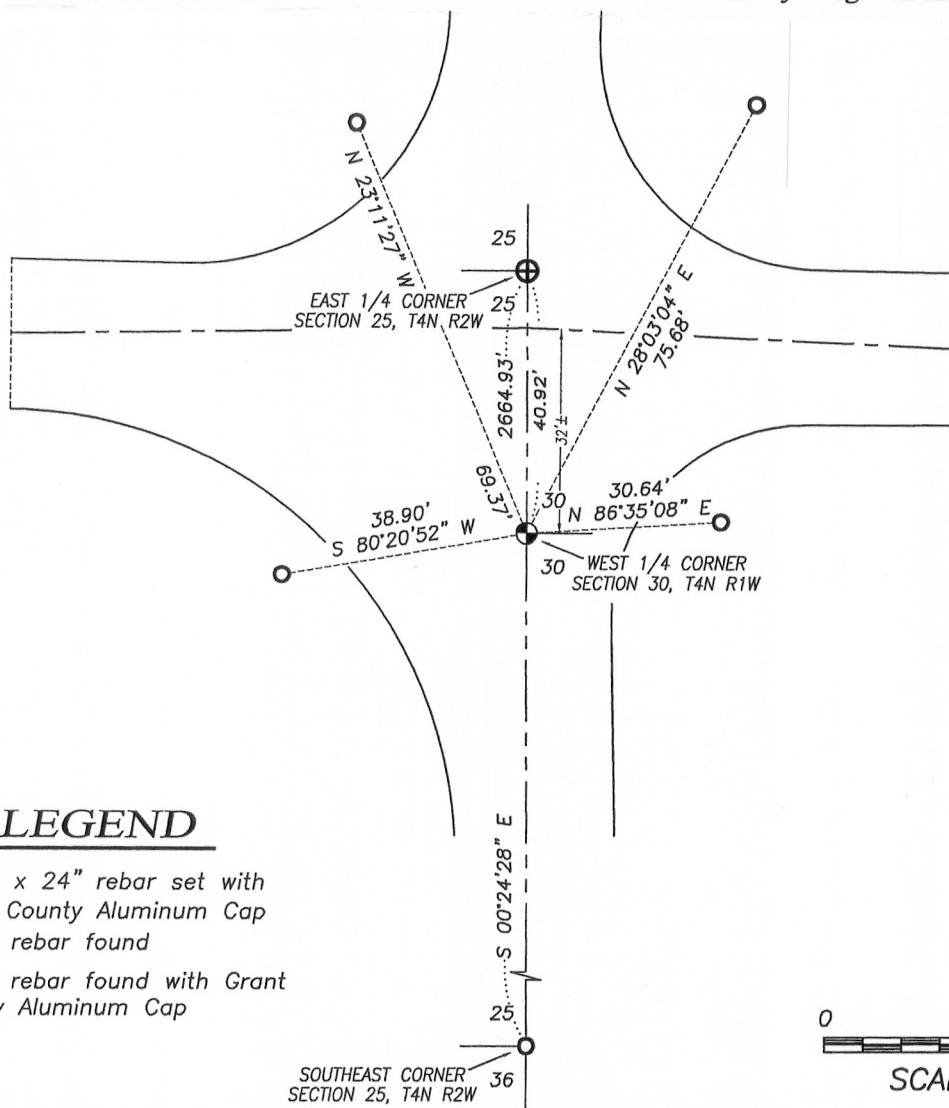
Corner was never originally set.

DESCRIPTION OF CORNER EVIDENCE FOUND:

I reset the corner at the proportioned offset on the East line of the SE 1/4 of Section 25, T4N R2W. I verified this location using G.P.S. and E.D.M. methods.

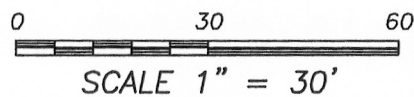
DESCRIPTION OF CORNER AND WITNESS MONUMENTS, references and accessories used to perpetuate the original or re-established location of this corner. Witnesses to corner location Bobby Sedgwick and Shelby Blindert.

SKETCH:



LEGEND

- ⊕ No. 8 x 24" rebar set with Grant County Aluminum Cap
- No. 6 rebar found
- ⊕ No. 8 rebar found with Grant County Aluminum Cap



Austin Engineering LLC
 austinengineeringllc.com

4211 HWY 81 E, LANCASTER, WI 53813
 PHONE: 608-723-6363 FAX: 608-723-6702

JOB NO: 12s251
 G:\T4NR1W\30
 H:\TIE\T4NR1W\94

FIELDBOOK: TDSR
 DRAWN BY: AJ AUSTIN
 CREW: BS-SB

RECEIVED MAR 26 1999

GRANT COUNTY CERTIFIED LAND CORNER

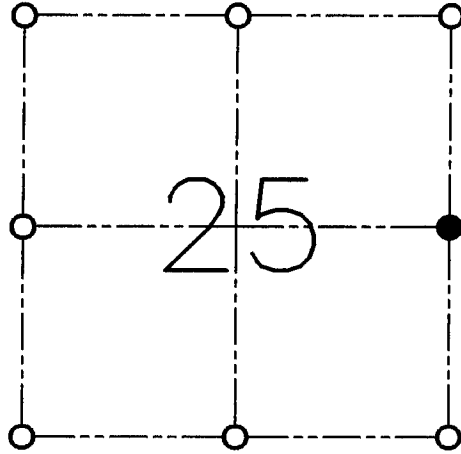
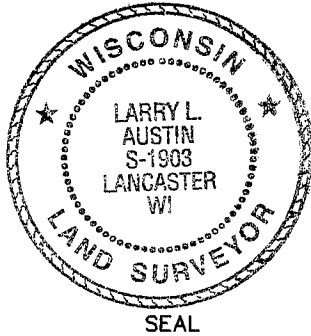
CORNER NO. 100

CERTIFICATE:

I, LARRY L. AUSTIN, DO HEREBY CERTIFY THAT ON SIXTEENTH DAY OF FEBRUARY, 1998, I FOUND NO EVIDENCE OF THE EAST 1/4 CORNER OF SECTION 25, TOWN 4 NORTH, RANGE 2 WEST, OF THE FOURTH PRINCIPAL MERIDIAN, AND I RE-ESTABLISHED SAID CORNER ACCORDING TO THE WISCONSIN STATUTES AS SHOWN AND DESCRIBED HEREON.

DATED THIS TWENTIETH DAY OF MARCH, 1998

Larry L. Austin
LARRY L. AUSTIN S-1903



● = CORNER LOCATION

**EAST 1/4 OF SECTION 25
T 4 N R 2 W
TOWN OF ELLENBORO**

HISTORY OF ORIGINAL CORNER ESTABLISHMENT:

CORNER WAS SET IN 1832 BY SIBLEY.

DESCRIPTION OF CORNER EVIDENCE FOUND:

I FOUND NO EVIDENCE OF THIS CORNER. I SET THE CORNER MIDWAY ONLINE BETWEEN THE NORTHEAST AND SOUTHEAST CORNERS. VERIFIED THIS LOCATION USING E.D.M. AND G.P.S. METHODS.

DESCRIPTION OF CORNER AND WITNESS MONUMENTS, REFERENCES AND ACCESSORIES USED TO PERPETUATE THE ORIGINAL OR RE-ESTABLISHED LOCATION OF THIS CORNER:

WITNESS TO THE CORNER LOCATION:

BOBBY SEDGWICK
SHELBY BLINDERT

SKETCH:

