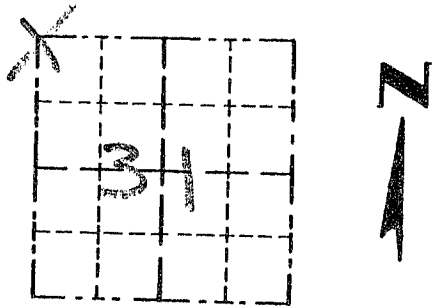


Survey Monument Record

TYPE OF MONUMENT 3/4" X 24" IRON BAR SET.

CORNER NO. 113
 SECTION 31
 TOWN 4N
 RANGE 1W

FIELD BOOK: 97-08
 PAGE (3)



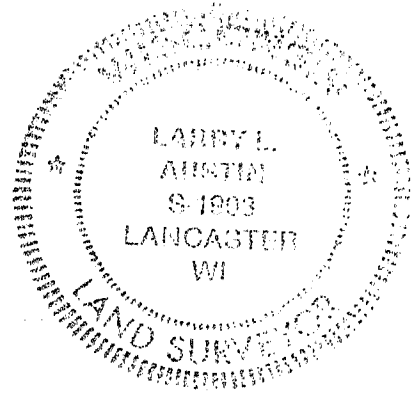
LOCATION
 (Indicated by "X")

BASIS FOR MONUMENT LOCATION

(Use reverse side if necessary)

Show info such as: History of corner, with reference to Vol. and pg., dates, surveyor; exact description of monument replaced; if location computed, by taped or EDM traverse; landowner, remarks, etc.

SEAL:



CORNER SET IN 1833 BY CLARK. NO RECORD FOUND SINCE ORIGINAL SURVEY; CORNER WAS SET AT THE RECORDED OFFSET FROM EXISTING FENCE WEST AND ON THE EAST LINE OF SECTION 36, T4N, R2W; VERIFIED THIS LOCATION BY EDM TRAVERSE OF THE AREA

CERTIFIED CORRECT

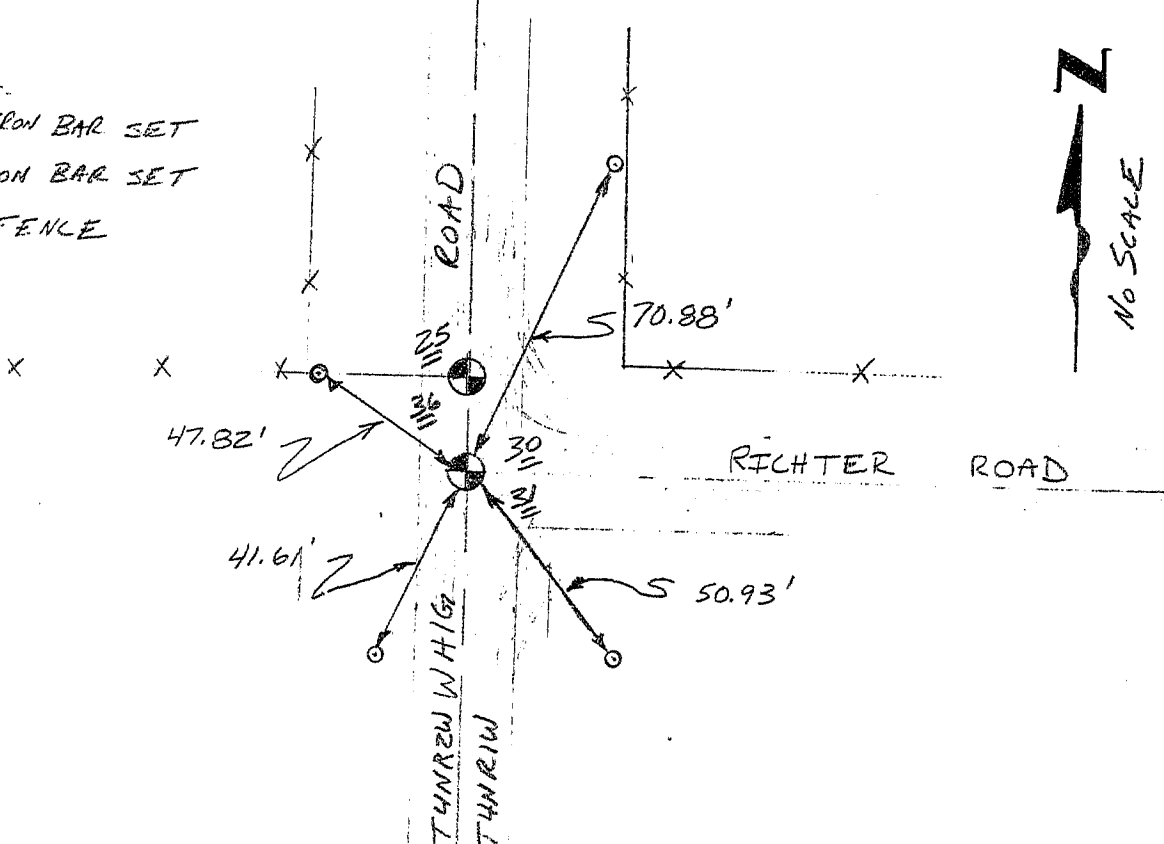
Larry L. Austin
 Registered Land Surveyor

DATE: 12/20/97

TIE SKETCH

Show at least three (3) ties and monument

- LEGEND
- 3/4" X 24" IRON BAR SET
 - 1/2" X 15" IRON BAR SET
 - XX EXISTING FENCE



Survey Monument Record

TYPE OF MONUMENT 3/4" X 24" IRON BAR SET

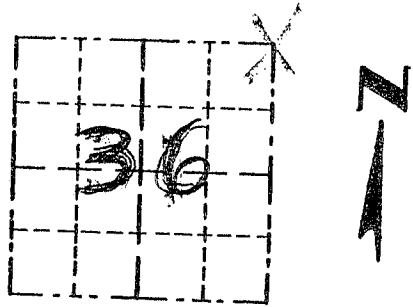
CORNER NO. 101
 SECTION 36
 TOWN 4N
 RANGE 7W

FIELD BOOK: 97-08
 PAGE (3)

BASIS FOR MONUMENT LOCATION

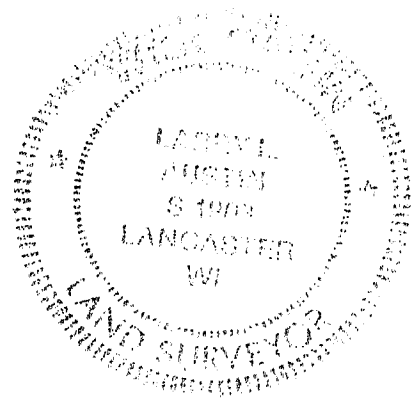
(Use reverse side if necessary)

Show info such as: History of corner, with reference to Vol. and pg., dates, surveyor; exact description of monument replaced; if location computed, by taped or EDM traverse; landowner, remarks, etc.



LOCATION
(Indicated by "X")

SEAL:



CORNER SET IN 1832 BY
 SIBLEY. NO RECORD FOUND
 SINCE ORIGINAL SURVEY; CORNER
 WAS SET ONLINE WITH A
 FENCE WEST FOR NORTHING;
 EASTING WAS SET BY
 EXISTING CENTERLINE NORTH/
 SOUTH. VERIFIED ITS LOCATION
 USING EDM METHODS.

CERTIFIED CORRECT

Larry Austin
 Registered Land Surveyor

DATE: 12/20/97

TIE SKETCH

Show at least three (3) ties and monument

LEGEND

- ⊕ 3/4" X 24" IRON BAR SET
- 1/2" X 15" IRON BAR SET
- XX EXISTING FENCE

