

U.S. PUBLIC LAND SURVEY MONUMENT RECORD

(As Required By s. A-E 7.08, WI Adm. Code)

History of original corner establishment and subsequent restorations and description of any record, monument, occupational, testimonial or other evidence considered:

HISTORY IS ORIG GOUT SURVEY NO MONUMENTS FOUND OCCUPATIONAL EVIDENCE IS E N-S ROAD & FENCE LINE E & W OF CORNER SET THE CORNER ON THE E-W FENCE & 1/2 DISTANCE BETWEEN MONUMENTS AT THE SE & SW SECTION CORNER. THE LOCATION FIT THE N-S ROAD BY .5 FEET.

Corner was: (Check All That Apply)

- Restored through acceptance of an obliterated evidence location
- Restored through acceptance of a found perpetuated location
- Considered a lost corner and reestablished through lost corner proportionate methods (include a plan view drawing showing distances and directions to other Public Land Survey Corners used for proportioning and determining the corner location)
- Restored or reestablished in a location that differs from a previous restoration or reestablishment (include a plan view drawing and indicate what was set and /or found)

Describe the monument and accessories used to perpetuate the location of this corner. (Include a plan view drawing and indicate what was set and/or found)

50-10 N 89° 22' 07" E 2644.67'
 50-13 S 09° 50' 52" W 2644.66'
 50-43 N 38° 53' 39" W 34.57'
 50-44 S 41° 03' 17" W 26.52'
 50-45 S 32° 22' 51" E 45.74'
 50-46 N 84° 42' 42" W 16.96'

The S 1/4

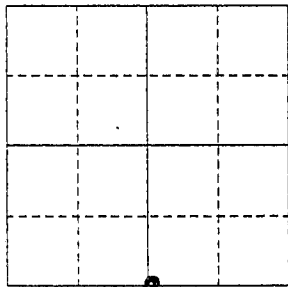
corner of Section 24

T. 4 N., R. 2W E.,

GRANT County, Wisconsin

Job ID: 2000S-137

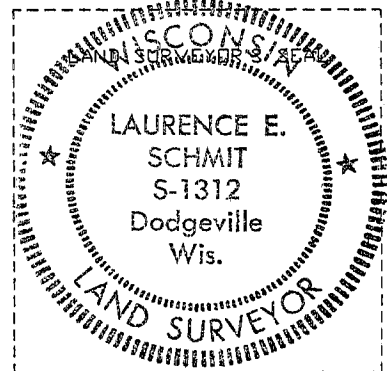
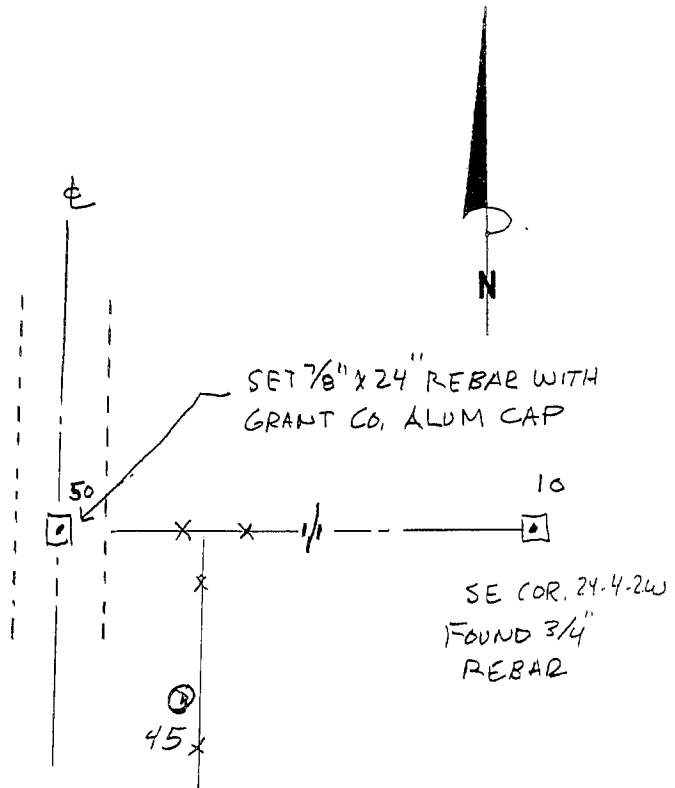
Book # 2000-3 p. 79



● = Location of Corner

SW COR 24-4-2W
 SET 7/8" REBAR
 WITH GRANT ID.
 ALUM CAP

- LEGEND
- SECTION CORNER AS DESCRIBED
 - ⊙ 5/8" REBAR TIE SET
 - ✕ FENCE



I, LAURENCE E. SCHMIT

Type or print name) certify that the corner location shown on this record was determined by me or under my direction and control and that this U.S. Public Land Survey Monument Record is correct and complete to the best of my knowledge and belief.

Laurence E. Schmit 8-2-2000

Signature

Date

Index No. _____