

Survey Monument Record

TYPE OF MONUMENT 3/4" X 24" IRON  
BAR SET

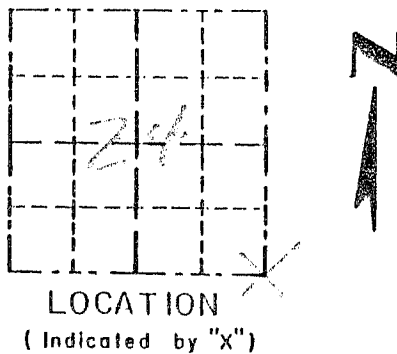
CORNER NO. 81  
 SECTION 74  
 TOWN 4N  
 RANGE 7W

FIELD BOOK: 96-22(A)  
 PAGE (27)

BASIS FOR MONUMENT LOCATION

(Use reverse side if necessary)

Show info such as: History of corner, with reference to Vol. and pg, dates, surveyor; exact description of monument replaced; if location computed, by taped or EDM traverse; landowner, remarks, etc.



SEAL:

CORNER SET IN 1832  
 BY SIBLEY. NO RECORD  
 OF CORNER FOUND SINCE  
 ORIGINAL SURVEYS; CORNER  
 SET AT AN OCCUPIED FENCE  
 FOR NOTHING, PROJECTION OF  
 E SOUTH FOR FASTING. VERIFIED  
 THIS LOCATION USING EDM  
 METHODS.

CERTIFIED CORRECT

Registered Land Surveyor

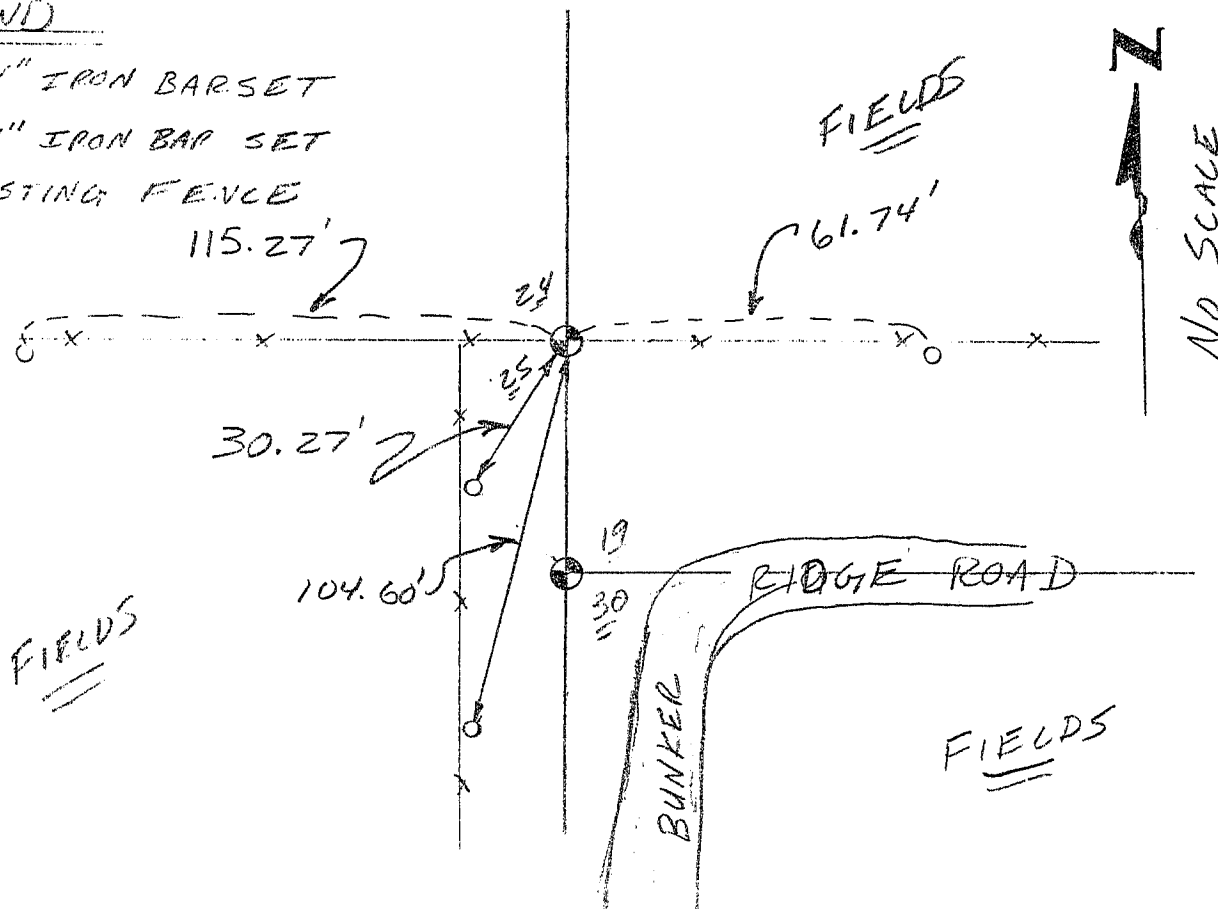
DATE: \_\_\_\_\_

TIE SKETCH

Show at least three (3) ties and monument

LEGEND

- ⊕ 3/4" X 24" IRON BAR SET
- 1/2" X 24" IRON BAR SET
- EXISTING FENCE



Survey Monument Record

TYPE OF MONUMENT 3/4" X 24" IRON BAR SET

CORNER NO. 93  
 SECTION 25  
 TOWN T14N  
 RANGE R10E

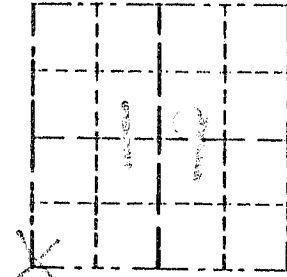
FIELD BOOK: 96-22(A)  
 PAGE 27

BASIS FOR MONUMENT LOCATION

(Use reverse side if necessary)

Show info such as: History of corner, with reference to Vol. and pg, dates, surveyor; exact description of monument replaced; if location computed, by taped or EDM traverse, landowner, remarks, etc.

CORNER SET IN 1833 BY FOREP CLARK. NO RECORD OF CORNER FOUND SINCE ORIGINAL SURVEYS. CORNER WAS SET AT RECORDED OFFSET FROM THE NE CORNER OF SECTION 25, T4N R2W, ONLINE BETWEEN THE NORTHEAST AND THE EAST CORNERS OF SECTION 24, T4N R2W, VERIFIED ITS LOCATION USING EDM METHODS.



LOCATION  
(Indicated by "X")



SEAL:

CERTIFIED CORRECT

Registered Land Surveyor

DATE: \_\_\_\_\_

TIE SKETCH

Show at least three (3) ties and monument

LEGEND

- ⊕ 3/4" X 24" IRON BAR SET
- 1/2" X 24" IRON BAR SET
- XX EXISTING FENCE

