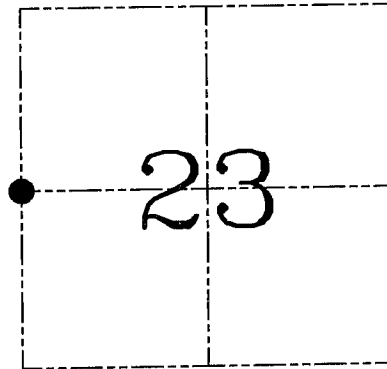
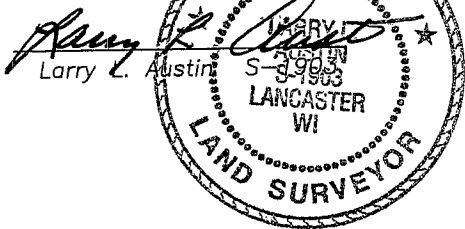


**U.S. PUBLIC LAND SURVEY MONUMENT RECORD – GRANT COUNTY, WI**  
**Section 23, Town 4 North Range 2 West, Town of Ellenboro**

CERTIFICATE

I, Larry L. Austin, do hereby certify that the corner location on this record was determined by me and/or under my direct supervision and that this U.S. public land survey monument record is correct and complete to the best of my knowledge and belief.

Dated this 5th day of August, 2005



● = CORNER LOCATION

HISTORY OF CORNER ESTABLISHMENT

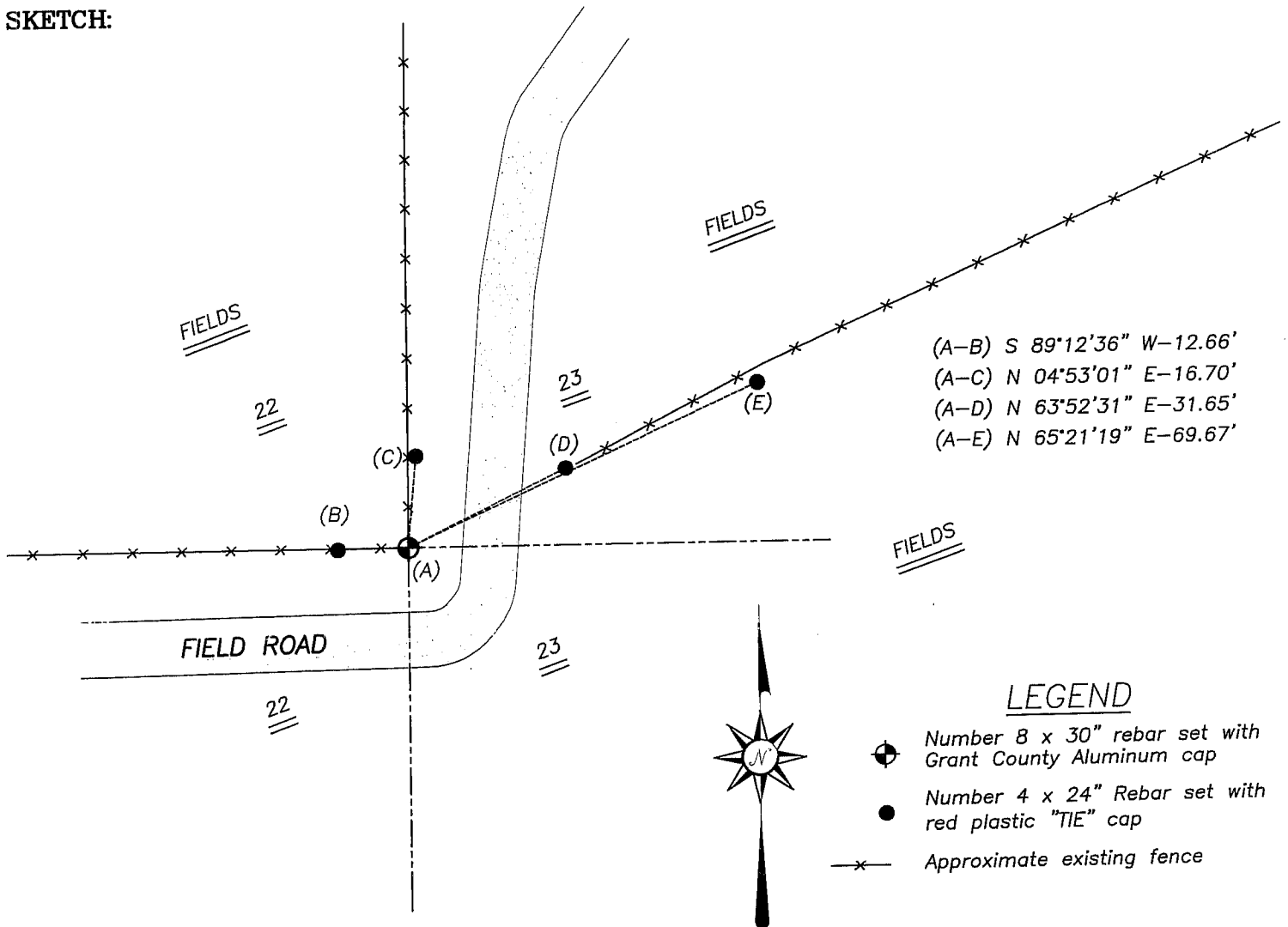
Corner was originally set in 1833 by Clark. In 1856 Overton performed three surveys in Sections 22 & 23 using the original corner.

DESCRIPTION OF CORNER EVIDENCE FOUND

I was unable to locate the original bearing trees or post. I accepted an occupied fence corner and verified it's location after an EDM & GPS methods.

DESCRIPTION OF CORNER AND WITNESS MONUMENTS, references and accessories used to perpetuate the original or re-established location of this corner. Witnesses to corner location Bobby Sedgwick & Brad Digman & Shane Austin

**SKETCH:**



- (A-B) S 89°12'36" W-12.66'
- (A-C) N 04°53'01" E-16.70'
- (A-D) N 63°52'31" E-31.65'
- (A-E) N 65°21'19" E-69.67'

LEGEND

- ⊕ Number 8 x 30" rebar set with Grant County Aluminum cap
- Number 4 x 24" Rebar set with red plastic "TIE" cap
- x- Approximate existing fence

SKETCH NOT TO SCALE