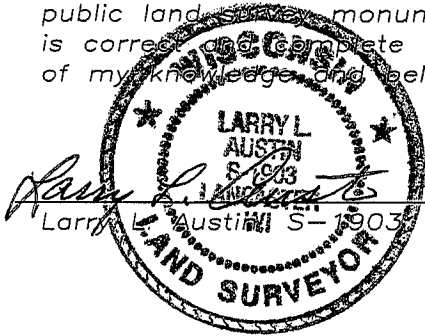


U.S. PUBLIC LAND SURVEY MONUMENT RECORD

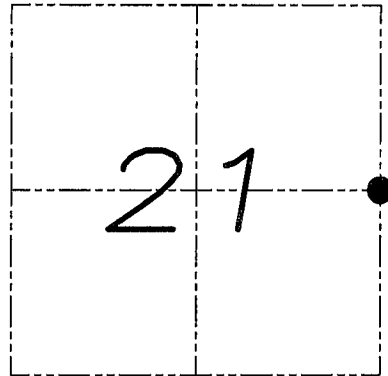
Section 21, Town 4 North Range 2 West, Town of Ellenboro, Grant County, Wisconsin

CERTIFICATE

I, Larry L. Austin, do hereby certify that the corner location on this record was determined by me and/or under my direct supervision and that this U.S. public land survey monument record is correct and complete to the best of my knowledge and belief.



1.7.09
date



● = CORNER LOCATION

HISTORY OF CORNER

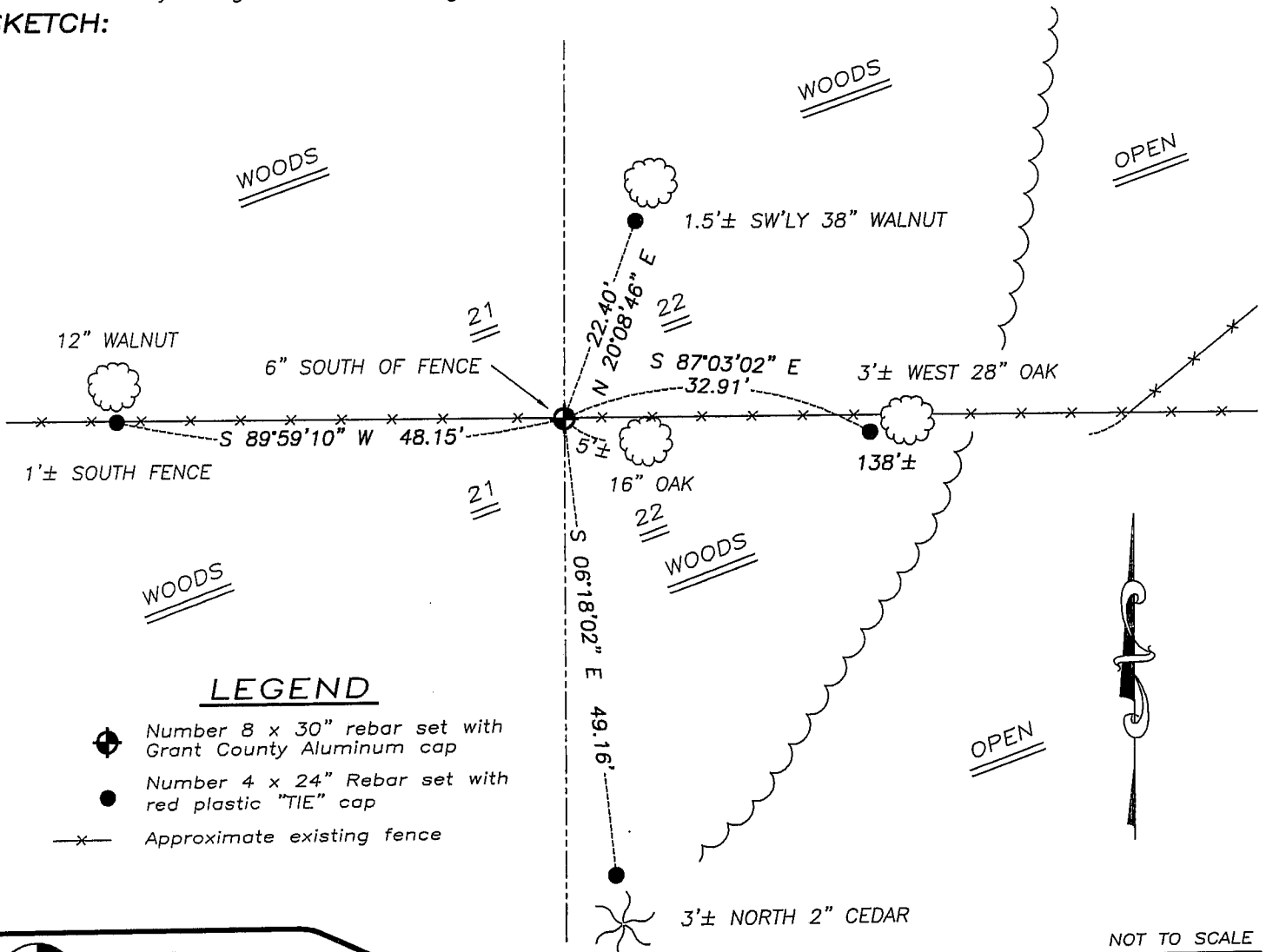
Corner was originally set in 1832 by Clark. No other record of the corner was found.

CORNER EVIDENCE FOUND

I reset the corner on-line between the Northeast and Southeast corners for Easting. An existing East-West fence was used for Northing. Verified this location using EDM & GPS methods.

DESCRIPTION OF CORNER AND WITNESS MONUMENTS, references and accessories used to perpetuate the original or re-established location of this corner. Witnesses to monument location Bobby Sedgwick & Brad Digman & Shane Austin

SKETCH:



LEGEND

- Number 8 x 30" rebar set with Grant County Aluminum cap
- Number 4 x 24" Rebar set with red plastic "TIE" cap
- x— Approximate existing fence

NOT TO SCALE



Austin
Engineering LLC

4211 HWY 81 E, LANCASTER, WI 53813
PHONE 608-723-6363 FAX 608-723-6702

JOB NUMBER: 08S262-MERKES
FIELDBOOK: TDSR, 2810
G:\T4NR2W\T4NR2W
H:\TIE\T4NR2W\77

DRAWN BY: SW AUSTIN
APPROVED: LL AUSTIN

77