

# U.S. PUBLIC LAND SURVEY MONUMENT RECORD - GRANT COUNTY, WI

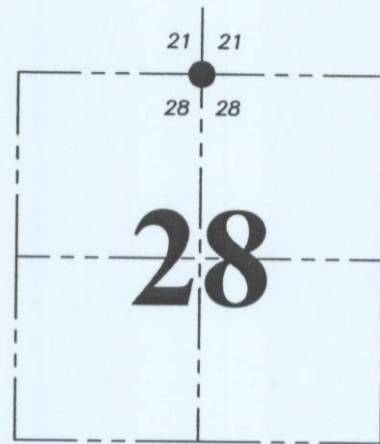
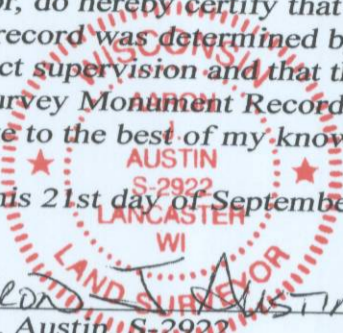
Section 28, Town 4 North Range 2 West, Town of Ellenboro

**CERTIFICATE:**

I, Aaron J. Austin, Wisconsin Professional Land Surveyor, do hereby certify that the corner location on this record was determined by me and/or under my direct supervision and that this U.S. Public Land Survey Monument Record is correct and complete to the best of my knowledge and belief.

Dated this 21st day of September, 2015.

*Aaron J. Austin*  
 Aaron J. Austin, S-2922



● = CORNER LOCATION

HISTORY OF CORNER ESTABLISHMENT:

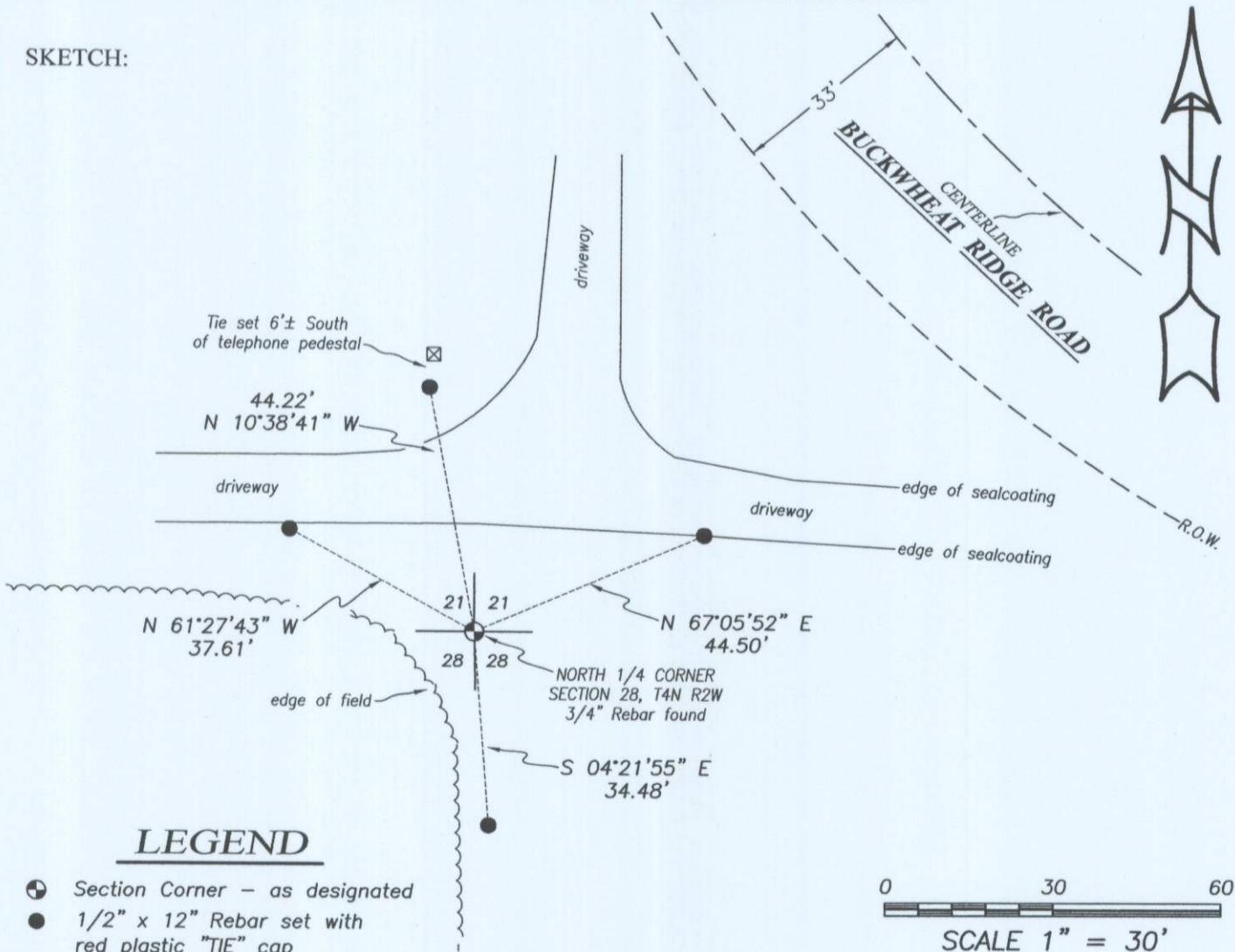
1832-Clark set original corner.  
 1995-Larry Austin reset the corner and prepared a Grant County Survey Monument Record.  
 Several surveys have accepted this corner location.

DESCRIPTION OF CORNER EVIDENCE FOUND:

I found a 3/4" rebar in place. I set 4 new witness corners after verification to area corners by E.D.M. and G.P.S. methods.

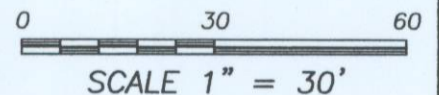
DESCRIPTION OF CORNER AND WITNESS MONUMENTS, references and accessories used to perpetuate the original or re-established location of this corner. Witnesses to corner location Shane Austin.

SKETCH:



**LEGEND**

- ⊕ Section Corner - as designated
- 1/2" x 12" Rebar set with red plastic "TIE" cap



**Austin Engineering LLC**  
 austinengineeringllc.com

4211 HWY 81 E, LANCASTER, WI 53813  
 PHONE: 608-723-6363 FAX: 608-723-6702

JOB NO: 15S142  
 G:\15S142  
 H:\TIE\T4NR2W\88

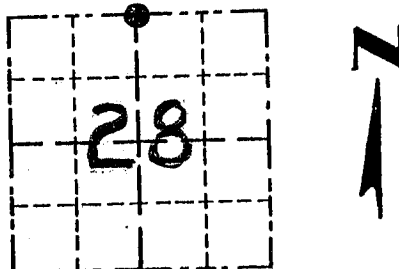
FIELDBOOK: TDSR  
 DRAWN BY: AJ AUSTIN  
 CREW: SW AUSTIN

# GRANT COUNTY

## Survey Monument Record

TYPE OF MONUMENT 3/4" x 24" IRON BAR  
 STATE PLANE COORDINATES: N \_\_\_\_\_  
 E \_\_\_\_\_  
 ELEVATION — M.S.L. DATUM: \_\_\_\_\_  
 THETA ANGLE: \_\_\_\_\_  
 FIELD BOOK: \_\_\_\_\_  
 PAGE \_\_\_\_\_

CORNER NO. 88  
 SECTION 28  
 TOWN 4 N  
 RANGE 2 W  
N 1/4 COR.



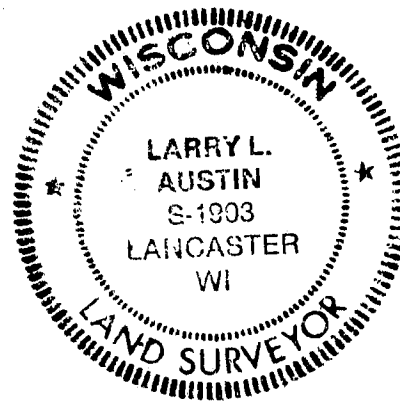
LOCATION  
 (Indicated by "•")

### BASIS FOR MONUMENT LOCATION

(Use reverse side if necessary)

Show info such as: History of corner, with reference to Vol. and pg., dates, surveyor; exact description of monument replaced; if location computed, by taped or EDM traverse; landowner, remarks, etc.

SEAL:



CORNER WAS ORIGINALLY SET IN 1833 BY CLARK; NO RECORD FOUND OF THE CORNER SINCE THE ORIGINAL SURVEY. I PROPORTIONED THE CORNER E-W; THIS LOCATION FITS OCCUPATION PRETTY GOOD. VERIFIED THIS LOCATION BY MEASUREMENTS TO OTHER CORNERS IN THE AREA.

CERTIFIED CORRECT

*Larry L. Austin*  
 Registered Land Surveyor  
 DATE: 8/20/95

### TIE SKETCH

Show at least three (3) ties and monument

### LEGEND

- 3/4" x 24" IRON BAR SET = CORNER
- 3/8" x 12" STEEL SPIKE SET FLUSH AS TIES

