

**U.S. PUBLIC LAND SURVEY MONUMENT RECORD - GRANT COUNTY, WI**

Section 22, Town 4 North Range 2 West, Town of Ellenboro

**CERTIFICATE:**

I, Aaron J. Austin, do hereby certify that the corner location on this record was determined by me and/or under my direct supervision and that this U.S. Public Land Survey Monument Record is correct and complete to the best of my knowledge and belief.

Dated this 1st day of June, 2012

*Aaron J. Austin*  
 Aaron J. Austin, S-2922



● = CORNER LOCATION

HISTORY OF CORNER ESTABLISHMENT:

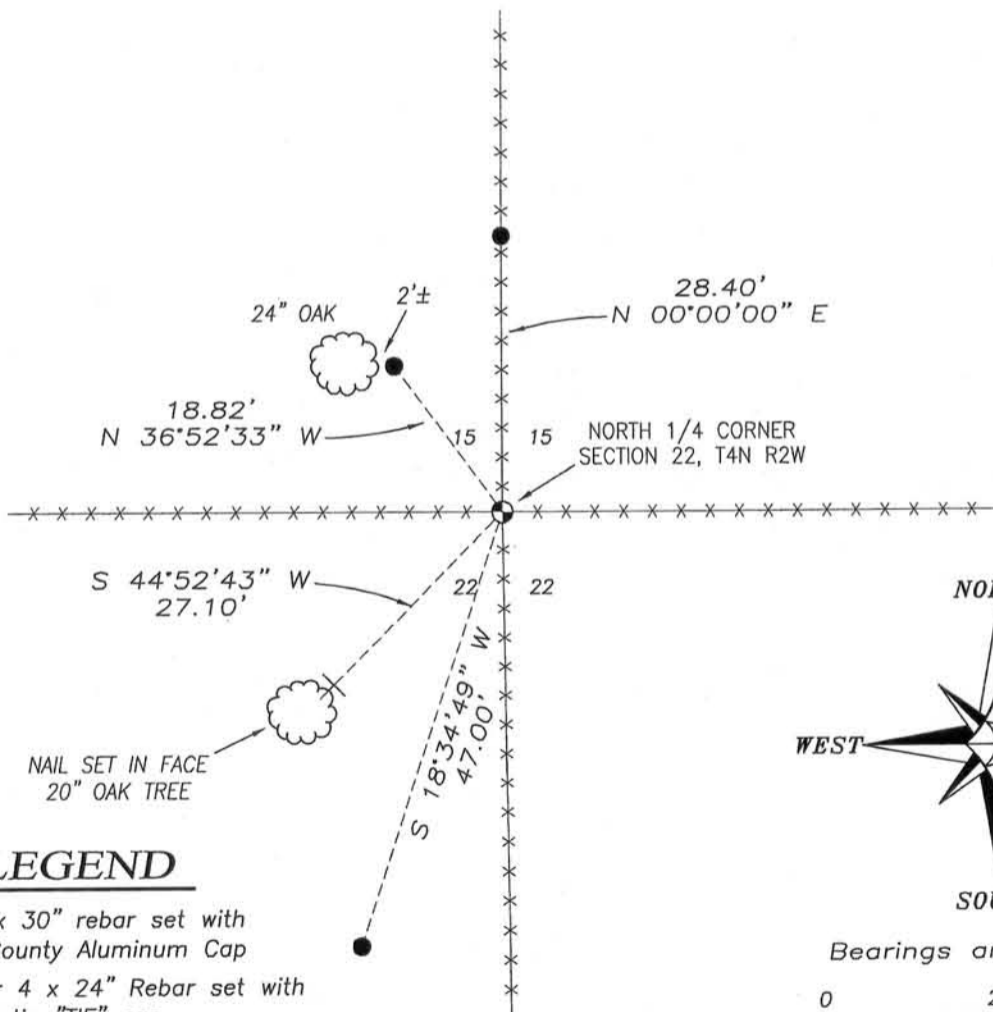
Corner was originally set by Robert Clark in 1833. John Everett found the original corner 1852. Charles Sampson also found the corner in 1893. No other record found for this corner.

DESCRIPTION OF CORNER EVIDENCE FOUND:

The survey by Sampson in 1893 stated that both bearing trees were gone. No evidence of the corner was found and accepted an existing fence corner. This location was verified by G.P.S. and E.D.M. methods.

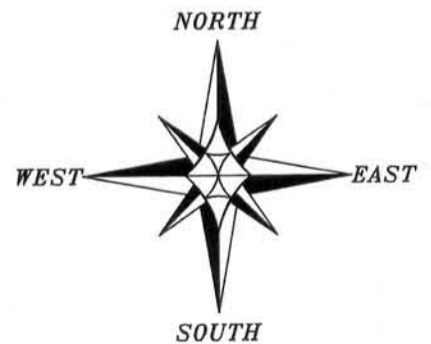
DESCRIPTION OF CORNER AND WITNESS MONUMENTS, references and accessories used to perpetuate the original or re-established location of this corner. Witnesses to corner location Bobby Sedgwick & Shelby Blindert

SKETCH:

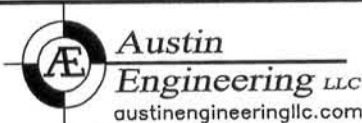


**LEGEND**

- No. 8 x 30" rebar set with Grant County Aluminum Cap
- Number 4 x 24" Rebar set with red plastic "TIE" cap
- x-x- Existing fence



Bearings are assumed.  
 0 20 40  
 SCALE 1" = 20'



4211 HWY 81 E, LANCASTER, WI 53813  
 PHONE: 608-723-6363 FAX: 608-723-6702

JOB NO: 12s056  
 G:\T4NR2W\T4NR2W  
 H:\TIE\T4NR2W\66

FIELDBOOK: 1201  
 DRAWN BY: AJ AUSTIN  
 CREW: BS-SB