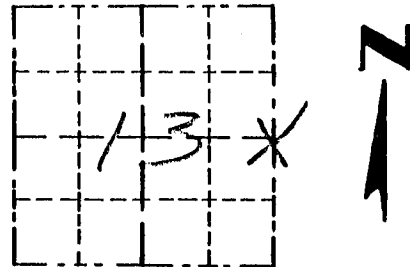


Survey Monument Record

TYPE OF MONUMENT 3/4" x 24" IRON BAR SET

CORNER NO. 60
 SECTION 13
 TOWN 4N
 RANGE 2W

FIELD BOOK: 96-22
 PAGE (8)



LOCATION
 (Indicated by "X")

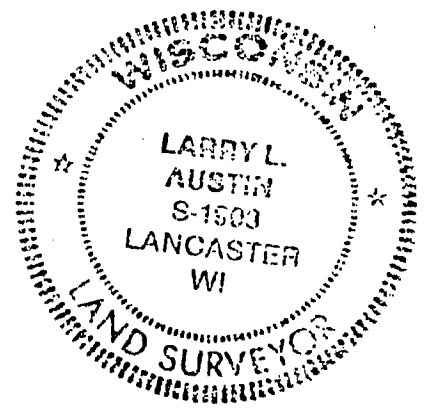
BASIS FOR MONUMENT LOCATION

(Use reverse side if necessary)

Show info such as: History of corner, with reference to Vol. and pg., dates, surveyor; exact description of monument replaced; if location computed, by taped or EDM traverse; landowner, remarks, etc.

SEAL:

CORNER SET IN 1832 BY SIBLEY. Sampson was AT THE CORNER AND SET A ROCK. THE ROCK WAS UNRECOVERABLE. I SET THE CORNER AT THE RECORDED OFFSET OF 111 CHAINS. FROM THE 7/8" IRON BAR FOUND, I VERIFIED ITS LOCATION USING EDM METHODS.



CERTIFIED CORRECT

Larry L. Austin
 Registered Land Surveyor

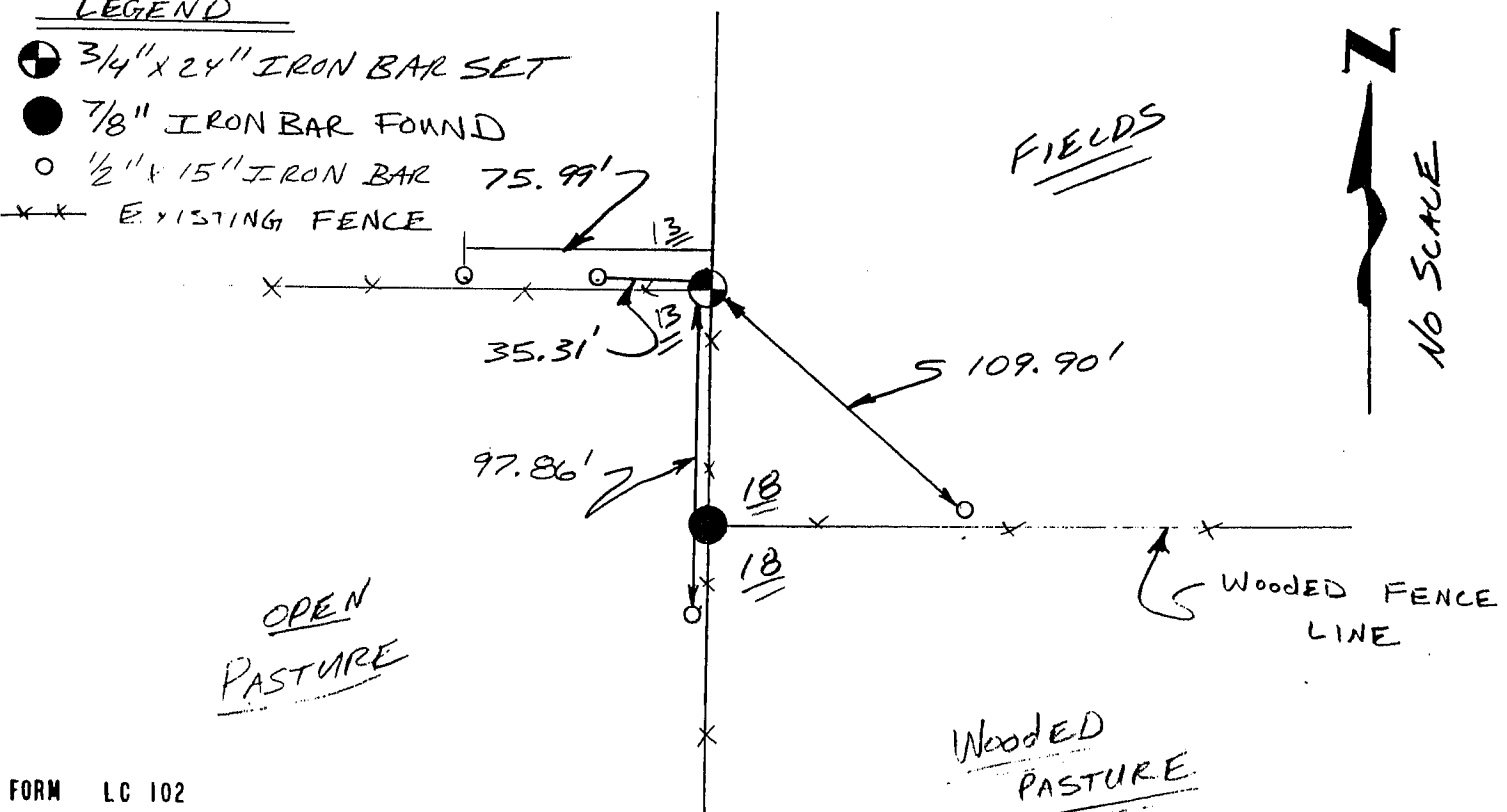
DATE: 4/6/97

TIE SKETCH

Show at least three (3) ties and monument

LEGEND

- ⊕ 3/4" x 24" IRON BAR SET
- 7/8" IRON BAR FOUND
- 1/2" x 15" IRON BAR
- EXISTING FENCE

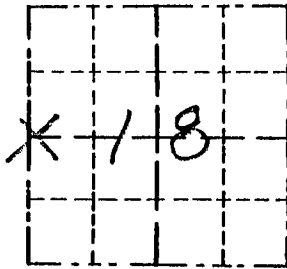


Survey Monument Record

TYPE OF MONUMENT 7/8" IRON BAR FOUND

CORNER NO. 54
 SECTION 18
 TOWN 4N
 RANGE 1W

FIELD BOOK: 96.22
 PAGE (8)



BASIS FOR MONUMENT LOCATION

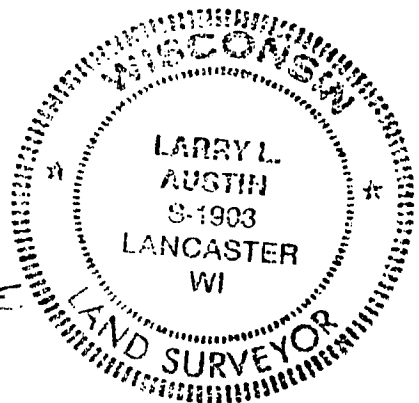
(Use reverse side if necessary)

Show info such as: History of corner, with reference to Vol. and pg., dates, surveyor; exact description of monument replaced; if location computed, by taped or EDM traverse; landowner, remarks, etc.

LOCATION
(Indicated by "X")

SEAL:

CORNER SET IN 1832 BY SIBLEY. NO RECORD FOUND SINCE ORIGINAL SURVEY; I FOUND A 7/8" IRON BAR AT AN OCCUPIED FENCE CORNER. I ACCEPTED ITS LOCATION AFTER A EDM TRAVERSE OF AREA.



CERTIFIED CORRECT

Larry L. Austin
 Registered Land Surveyor

DATE: 4/6/97

TIE SKETCH

Show at least three (3) ties and monument

