

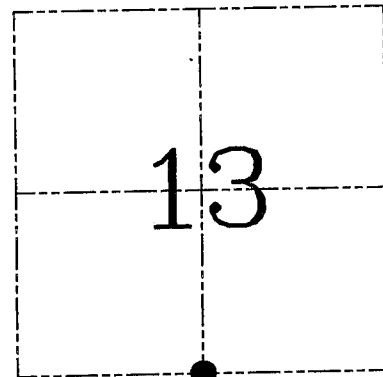
**U.S. PUBLIC LAND SURVEY MONUMENT RECORD - GRANT COUNTY, WI**  
**Section 13, Town 4 North Range 2 West, Town of Ellenboro**

CERTIFICATE

I, Larry L. Austin, do hereby certify that the corner location on this record was determined by me and/or under my direct supervision and that this U.S. public land survey monument record is correct and complete to the best of my knowledge and belief.

Dated this 25th day of February, 200

*Larry L. Austin*  
 Larry L. Austin S-1903



● = CORNER LOCATION

HISTORY OF CORNER ESTABLISHMENT

Corner was originally set in 1833 by Robert Clark. Sampson located the corner off of both bearing tree stumps. In 1997 I set this corner. No other record of the corner was found.

DESCRIPTION OF CORNER EVIDENCE FOUND

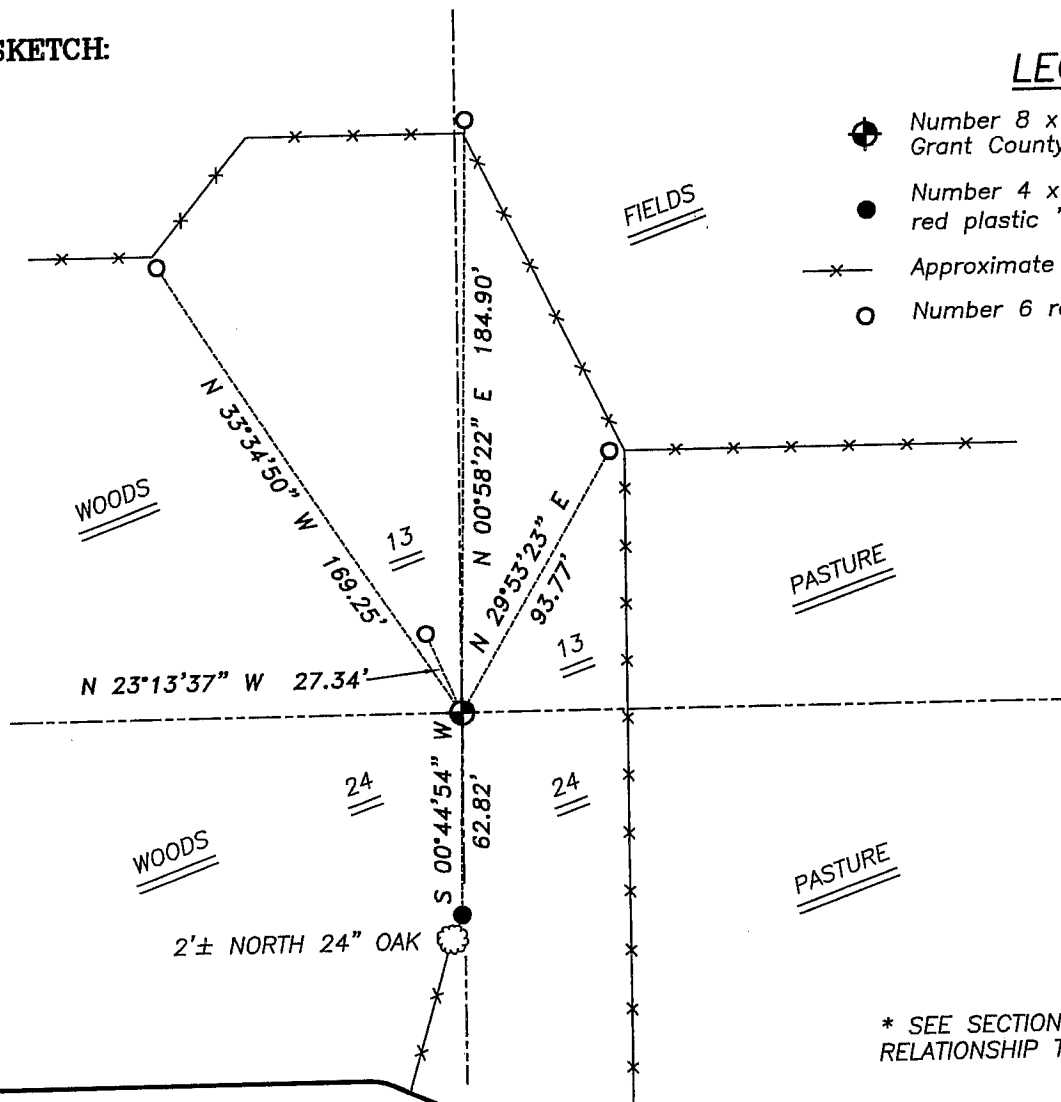
I found the #6 rebar placed by myself. I did not accept it's location after the movement of the Southwest corner of Section 13. I reset the corner midway on-line between the Southwest and Southeast corners of this section. Verified this location using EDM & GPS methods.

DESCRIPTION OF CORNER AND WITNESS MONUMENTS, references and accessories used to perpetuate the original or re-established location of this corner. Witnesses to corner location Bobby Sedgwick & Shelby Blindert & Brad Digman

**SKETCH:**

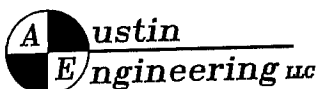
LEGEND

- ⊕ Number 8 x 30" rebar set with Grant County Aluminum cap
- Number 4 x 24" Rebar set with red plastic "TIE" cap
- x- Approximate existing fence
- Number 6 rebar found



\* SEE SECTION SUMMARY FOR \*  
 RELATIONSHIP TO AREA CORNERS

SKETCH NOT TO SCALE



4211 HWY 81 E, LANCASTER, WI 53813  
 PHONE 608-723-6363 FAX 608-723-6702

JOB NUMBER 04S354  
 FIELDBOOK: TSDR, 2231  
 G:\T4NR2W\24B  
 H:\TIE\T4NR2W\62

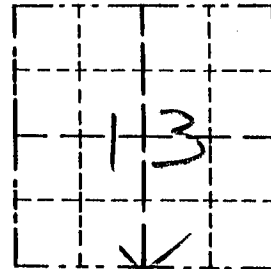
DRAWN BY: SW AUSTIN  
 APPROVED: LL AUSTIN

Survey Monument Record

TYPE OF MONUMENT 3/4" x 24" IRON BAR  
SET

CORNER NO. 62  
 SECTION 13  
 TOWN 4N  
 RANGE 2W

FIELD BOOK: 96-22  
 PAGE (8)



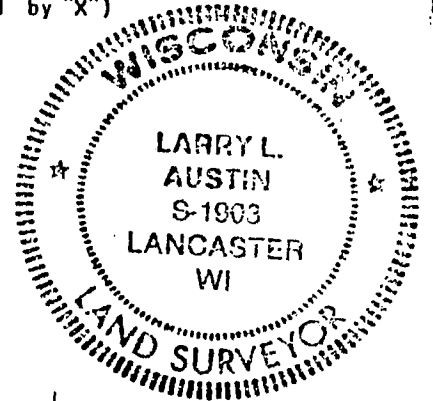
BASIS FOR MONUMENT LOCATION

(Use reverse side if necessary)

Show info such as: History of corner, with reference to Vol. and pg., dates, surveyor; exact description of monument replaced; if location computed, by taped or EDM traverse; landowner, remarks, etc.

LOCATION  
 (Indicated by "X")

SEAL:



CORNER SET IN 1833 BY  
 R. CLARK. SAMPSON LOCATED  
 THE CORNER OFF OF BOTH  
 BEARING TREE STUMPS. I DOUBLED  
 A 40 FROM EAST FOR EASTING.  
 NORTHING SET BY ONLINE BETWEEN  
 SOUTHWEST AND SOUTHEAST CORNERS.  
 VERIFIED ITS LOCATION USING EDM  
 METHODS.

CERTIFIED CORRECT

*Larry L. Austin*  
 Registered Land Surveyor  
 DATE: 4/6/97

TIE SKETCH

Show at least three (3) ties and monument

