

U. S. PUBLIC LAND SURVEY MONUMENT RECORD

INSTRUCTIONS: This record shall show the location of the corner and shall include all of the following nine elements (a through i).

(a) Identify the corner by reference to the U.S. public land survey system.

○ = Corner monument restored.

SOUTHEAST CORNER

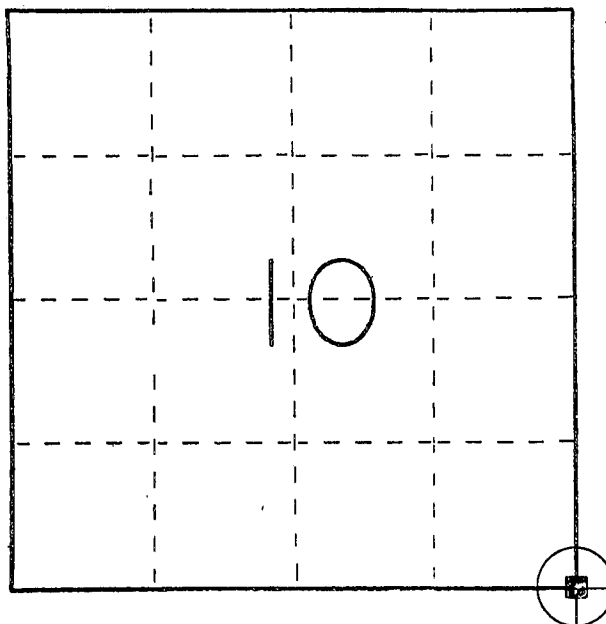
SECTION 10

TOWN 4 NORTH

RANGE 2 WEST

ELLENBORO TOWNSHIP

GRANT COUNTY, WISCONSIN



(b) Describe any record evidence, monument evidence, occupational evidence, testimonial evidence or any other material evidence you considered, and whether the monument was found or placed.

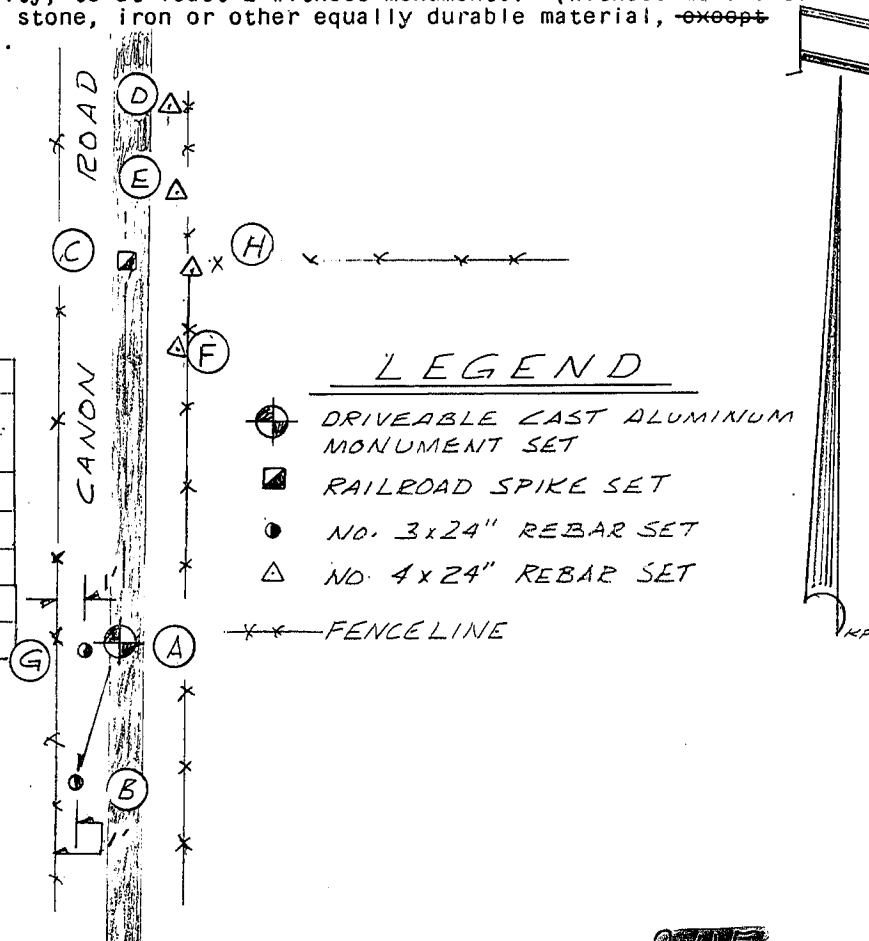
Monument was set by proportionate measurements from an EDM traverse of the area.

(c) In the plan view drawing below, provide reference ties to at least 4 witness monuments, or, if the location is within a municipality, to at least 2 witness monuments. (Witness monuments shall be made of concrete, natural stone, iron or other equally durable material, ~~except wood.~~) Describe witness monuments.

(d) Show a plan view drawing depicting the relevant monuments and reference ties which is sufficient in detail to enable accurate relocation of the corner monument if the corner monument is disturbed. Indicate north.

PT-PT	BEARING	DISTANCE
A-B	S16°23'42"W	79.44'
A-C	N1°31'07"E	198.01'
A-D	N5°00'59"E	280.18'
A-E	N6°24'08"E	238.32'
A-F	N10°07'46"E	165.84'
A-G	S79°32'10"W	26.32'
A-H	N7°58'06"E	201.48'

NOT TO SCALE



LEGEND

- DRIVEABLE CAST ALUMINUM MONUMENT SET
- RAILROAD SPIKE SET
- NO. 3x24" REBAR SET
- NO. 4x24" REBAR SET
- FENCELINE

(e) Describe any material discrepancy between the location of the corner as restored or reestablished and the location of that corner as previously restored or reestablished by distance and direction. Show the discrepancy on the plan view drawing under (d), above. Show the distances between the corner as previously restored or reestablished and (1) the corner as restored or reestablished, and (2) to at least 2 of the witness monuments shown on the drawing in (d), above.

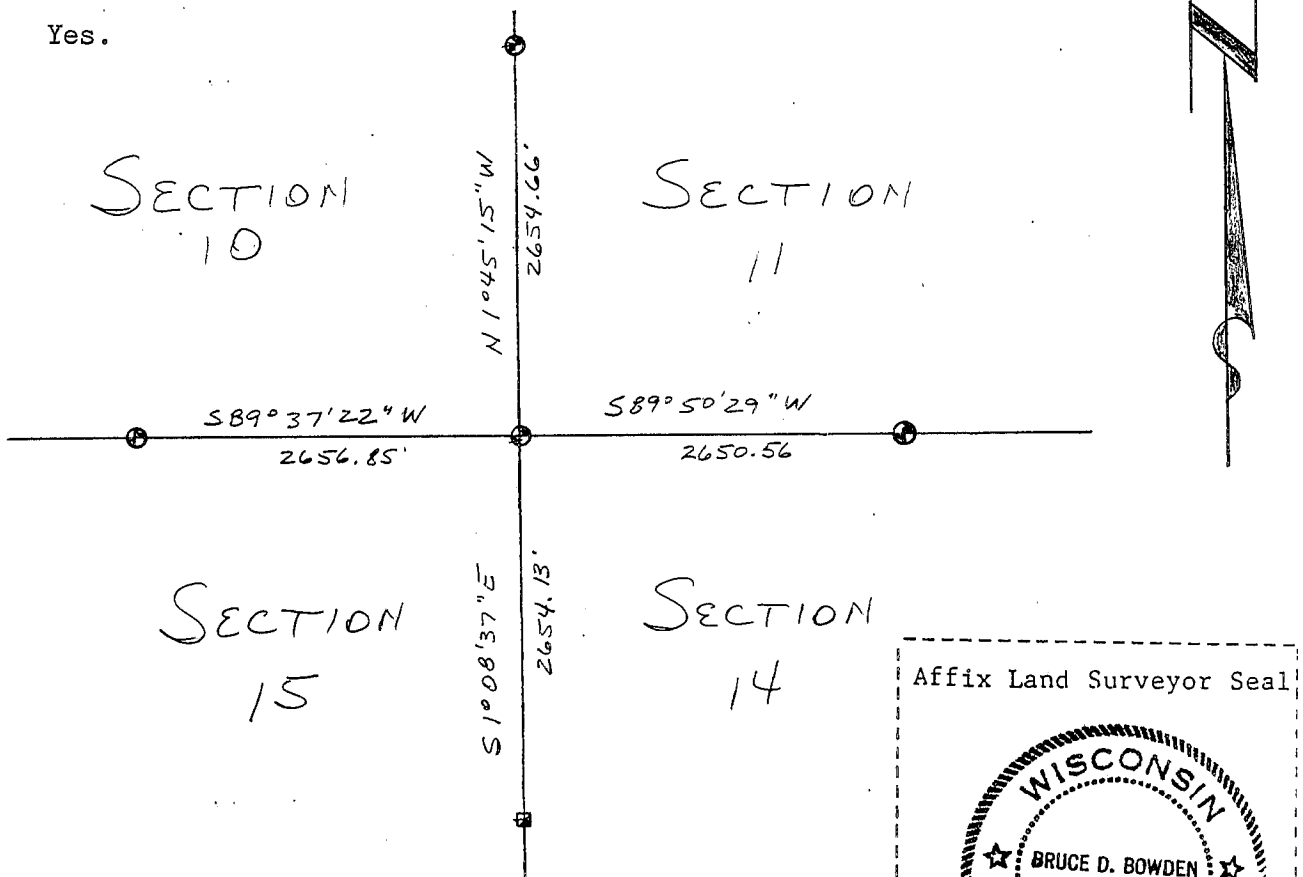
None.

(f) Was the corner restored through acceptance of (1) an obliterated evidence location, or, (2) a found perpetuated location?

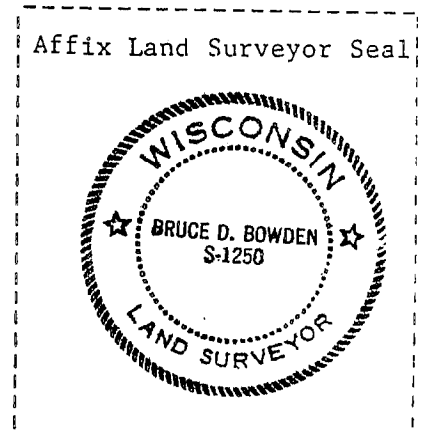
(1) An obliterated evidence location

(g&h) Was the corner reestablished through lost corner proportionate methods? If so, show the method, including the directions and distances to other public land survey corners used as evidence or used for proportioning in determining the corner location?

Yes.



(i) I, Bruce D. Bowden, R.L.S. - 1250
 (type or print name) certify that the corner location shown on this record was determined by me or under my direction and control and that this U.S. Public Land Survey Monument Record is correct and complete to the best of my knowledge and belief.



Bruce D. Bowden August 15, 1990
 Signature Date