

# GRANT COUNTY CERTIFIED LAND CORNER

CORNER NUMBER 36

**CERTIFICATE:**

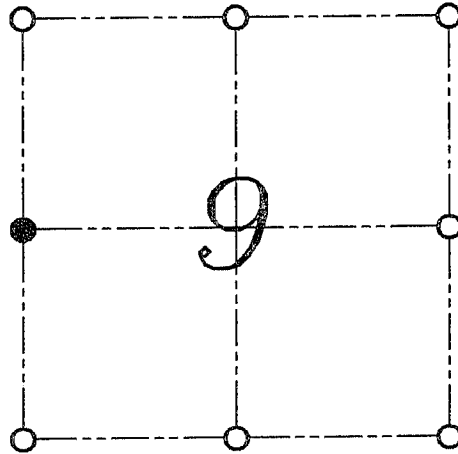
I, LARRY L. AUSTIN, DO HEREBY CERTIFY THAT ON 10th DAY OF NOVEMBER, 1999, I FOUND EVIDENCE OF THE WEST 1/4 CORNER OF SECTION 9, TOWN 4 NORTH, RANGE 2 WEST, OF THE FOURTH PRINCIPAL MERIDIAN, AND I RE-ESTABLISHED SAID CORNER ACCORDING TO THE WISCONSIN STATUTES AS SHOWN AND DESCRIBED HEREON.

DATED THIS 12th DAY OF NOVEMBER, 1999

*Larry L. Austin*  
LARRY L. AUSTIN S-1903



SEAL



● = CORNER LOCATION  
WEST 1/4 CORNER OF  
SECTION 9, T 4 N R 2 W  
TOWN OF ELLENBORO

**HISTORY OF ORIGINAL CORNER ESTABLISHMENT:**

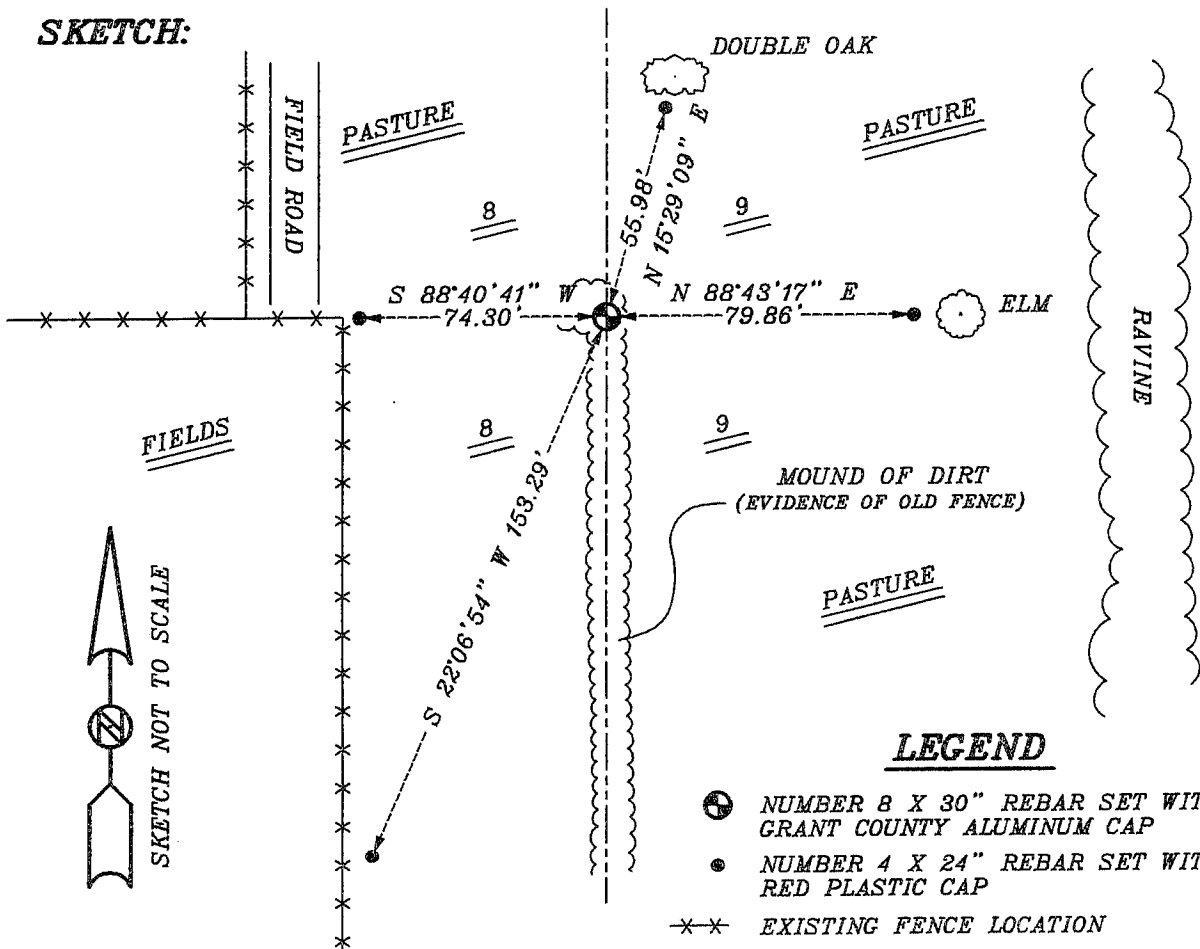
CORNER WAS SET IN 1833 BY ROBERT CLARK.  
IN 1892 CHARLES SAMPSON FOUND REMAINS OF OLD BEARING TREES.

**DESCRIPTION OF CORNER EVIDENCE FOUND:**

I FOUND NO EVIDENCE OF THE BEARING TREES. I RESET THE CORNER BASED ON EVIDENCE OF THE SAMPSON SURVEY. VERIFIED THIS LOCATION USING E.D.M. AND G.P.S. METHODS.

**DESCRIPTION OF CORNER AND WITNESS MONUMENTS, REFERENCES AND ACCESSORIES USED TO PERPETUATE THE ORIGINAL OR RE-ESTABLISHED LOCATION OF THIS CORNER:**  
WITNESS TO THE CORNER LOCATION: BOBBY SEDGWICK ; SHELBY BLINDERT

**SKETCH:**



**LEGEND**

- NUMBER 8 X 30" REBAR SET WITH GRANT COUNTY ALUMINUM CAP
- NUMBER 4 X 24" REBAR SET WITH RED PLASTIC CAP
- \*-\* EXISTING FENCE LOCATION