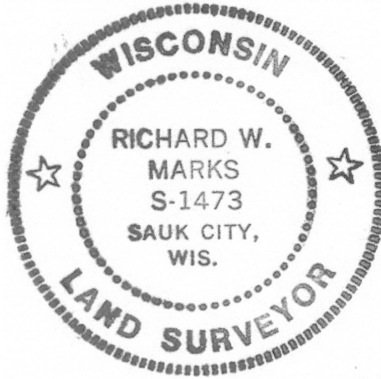


# U.S. PUBLIC LAND SURVEY MONUMENT RECORD

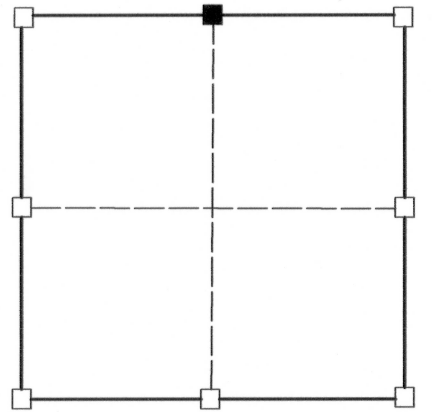
(a) Corner Location  
 Township 4 North  
 Range 2 West  
 Town of Ellenboro  
 Grant County



I, Richard Marks, certify that the corner location on this record was determined by me and that this U.S. public land survey monument record is correct and complete to the best of my knowledge and belief. Dated this 24th day of September, 2010

*Richard Marks*

Richard Marks R.L.S. # S-1473



■ = corner location

Section 17



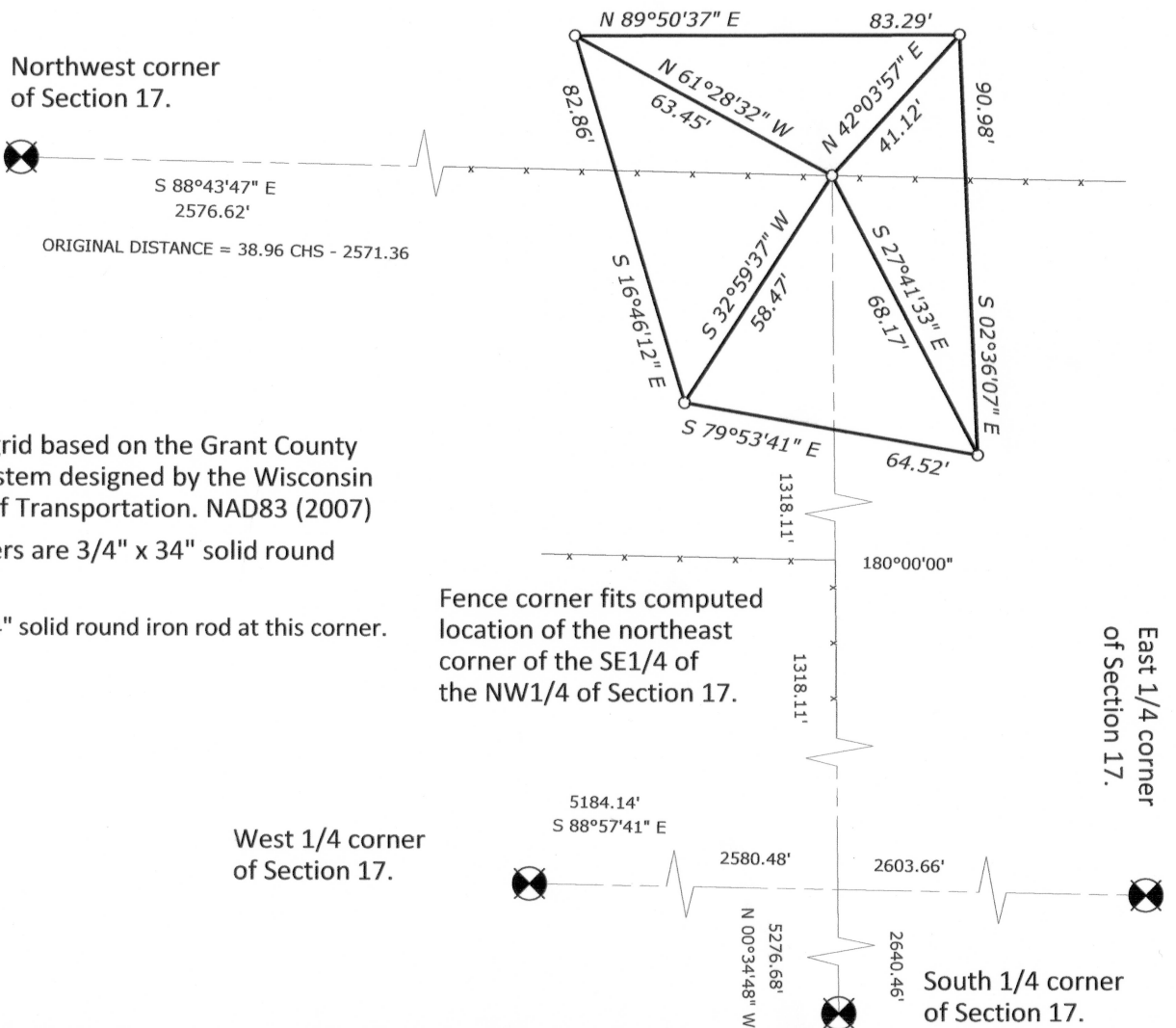
**History of corner establishment:**

The original survey was done by Sylvester Sibley and certified on June 13, 1832. I did not find any other records for this corner.

**Description of corner evidence found:**

This corner was set in an east - west fence line on the north line of Section 17 and on an extension of a line from the south 1/4 corner of Section 17 through a fence corner at the northeast corner of the SE1/4 of the NW1/4 of Section 17. The distance across the north line of the NW1/4 of Section 17 fits the original recorded distance within 5 1/2 feet. Split of Section fits the fence corner at the northeast corner of the SE1/4 of the NW1/4 within 2 feet.

**Description of corner and witness monuments, references and accessories used to perpetuate the original or re-established location of this corner.**



Bearings are grid based on the Grant County coordinate system designed by the Wisconsin Department of Transportation. NAD83 (2007)

Witness corners are 3/4" x 34" solid round iron rods set.

I set a 3/4" x 24" solid round iron rod at this corner.

Control: COMBINATION OF GPS AND CONVENTIONAL FIELD CONTROL

Datum: NAD 83 (2007)		County coordinates		State plane coordinates	
Lat.		North	510976.78'	North	
Long.		East	839359.15'	East	
					Page 50