

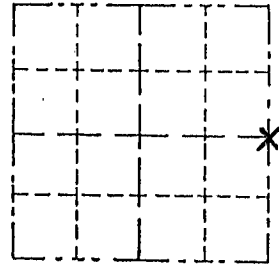
Survey Monument Record

TYPE OF MONUMENT 3/4" X 24" Iron Rod  
 STATE PLANE COORDINATES: N \_\_\_\_\_  
 E \_\_\_\_\_  
 ELEVATION — M.S.L. DATUM: \_\_\_\_\_  
 THETA ANGLE: \_\_\_\_\_  
 FIELD BOOK: \_\_\_\_\_  
 PAGE \_\_\_\_\_

CORNER NO. \_\_\_\_\_  
 SECTION 7  
 TOWN 4 NORTH  
 RANGE 2 WEST

BASIS FOR MONUMENT LOCATION

(Use reverse side if necessary)  
 Show info such as: History of corner, with reference to Vol. and pg., dates, surveyor; exact description of monument replaced; if location computed, by taped or EDM traverse; landowner, remarks, etc.

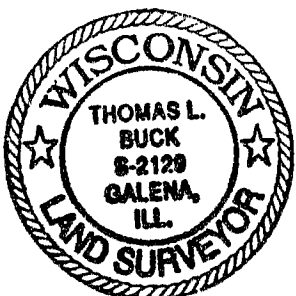


LOCATION

(Indicated by "X")

- FOUND PERPETUATED LOCATION
- OBLITERATED EVIDENCE LOCATION
- LOST CORNER (RESTORED BY PROPORTIONATE METHODS)

I FOUND NO HISTORY OF THIS CORNER SINCE THE ORIGINAL GOVERNMENT SURVEY. I HUNG A N.-S. FENCE LINE FOR MY EAST - WEST LOCATION AND USED THE NE CORNER OF THE SECTION AND THE OCCUPIED 40 CORNER DOUBLED OVER TO CONTROL THE NORTH - SOUTH LOCATION. AFTER AN E.D.M. TRAVERSE AND LOCATION SURVEY OF THE AREA.



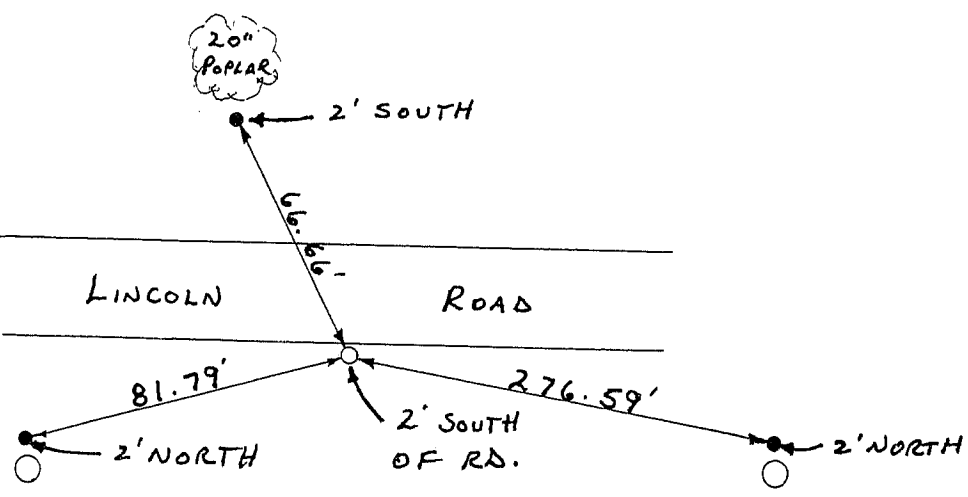
CERTIFIED CORRECT TO THE BEST OF MY KNOWLEDGE AND BELIEF

Thomas Buck  
 Registered Land Surveyor

DATE: 8/13/99

TIE SKETCH

Show at least three (3) ties and monument



NO SCALE

- = EXISTING POWER POLE
- = 3/4" X 24" IRON ROD
- = 1/2" IRON ROD