

MAR 29 1991

GOVERNMENT CORNER RECORD

S 1/4 CORNER, SECTION 6, TOWNSHIP 4 NORTH, RANGE 2 WEST,

TOWN, CITY OR VILLAGE OF ELLENBORO

TYPE OF MONUMENT: 3/4" X 48" IRON ROD SET ELEVATION - M.S.L. DATUM

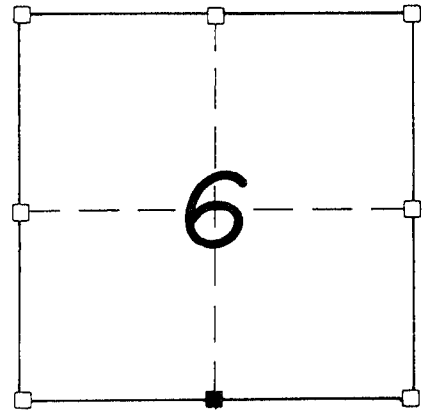
WITNESSES TO CORNER LOCATION

SECTION 6, T 4 N, R 2 W

SEAN M. WALSH

PATRICK J. DEDERICH

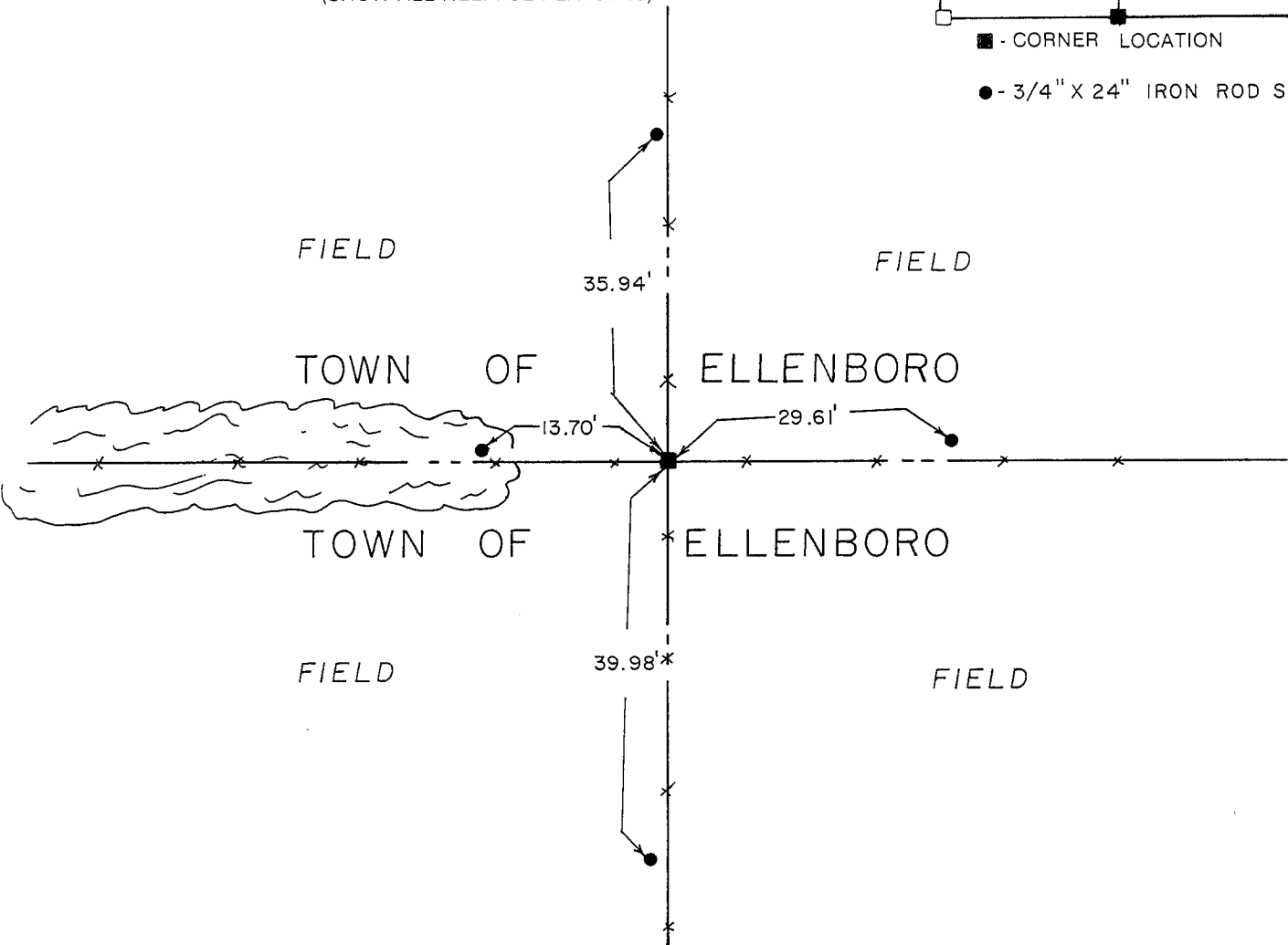
TOWN OF ELLENBORO



■ - CORNER LOCATION

● - 3/4" X 24" IRON ROD SET

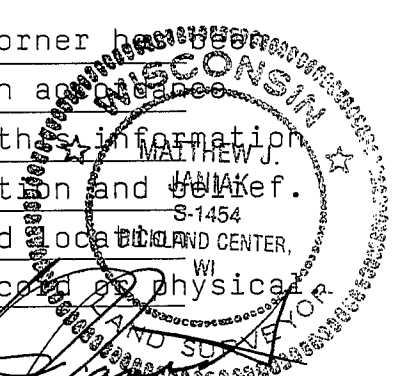
TIE SKETCH (SHOW ALL HELPFUL FEATURES)



SURVEYOR'S CERTIFICATE

SEAL S- 1454

I, Matthew J. Janiak, DO HEREBY CERTIFY THAT the above corner has been
monumented under my direction and supervision in accordance
with the information contained hereon and that the information
is correct to the best of my knowledge, information and belief.
This corner has been established at the occupied location as a
as no other evidence could be located either recorded or physical



DATED THIS 18th DAY OF FEBRUARY, 19 91

REGISTERED LAND SURVEYOR

P. 32