

GRANT COUNTY CERTIFIED LAND CORNER

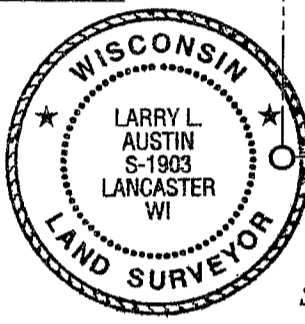
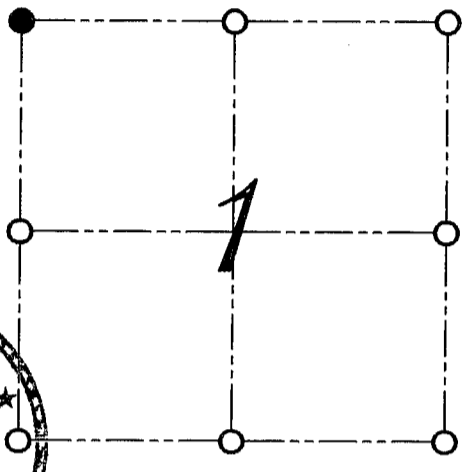
CERTIFICATE:

I, LARRY L. AUSTIN, DO HEREBY CERTIFY THAT ON EIGHTH DAY OF OCTOBER, 1999, I FOUND OCCUPATIONAL EVIDENCE OF THE NORTHWEST CORNER SECTION 1, TOWN 3 NORTH, RANGE 1 WEST, OF THE FOURTH PRINCIPAL MERIDIAN, AND I RE-ESTABLISHED SAID CORNER ACCORDING TO THE WISCONSIN STATUTES AS SHOWN AND DESCRIBED HEREON.

DATED THIS FIFTEENTH DAY OF OCTOBER, 1999

Larry L. Austin
LARRY L. AUSTIN S-1903

CORNER NUMBER 03



SEAL

● = CORNER LOCATION
NORTHWEST CORNER OF
SECTION 1, T 3 N R 1 W
TOWN OF PLATTEVILLE

HISTORY OF ORIGINAL CORNER ESTABLISHMENT:

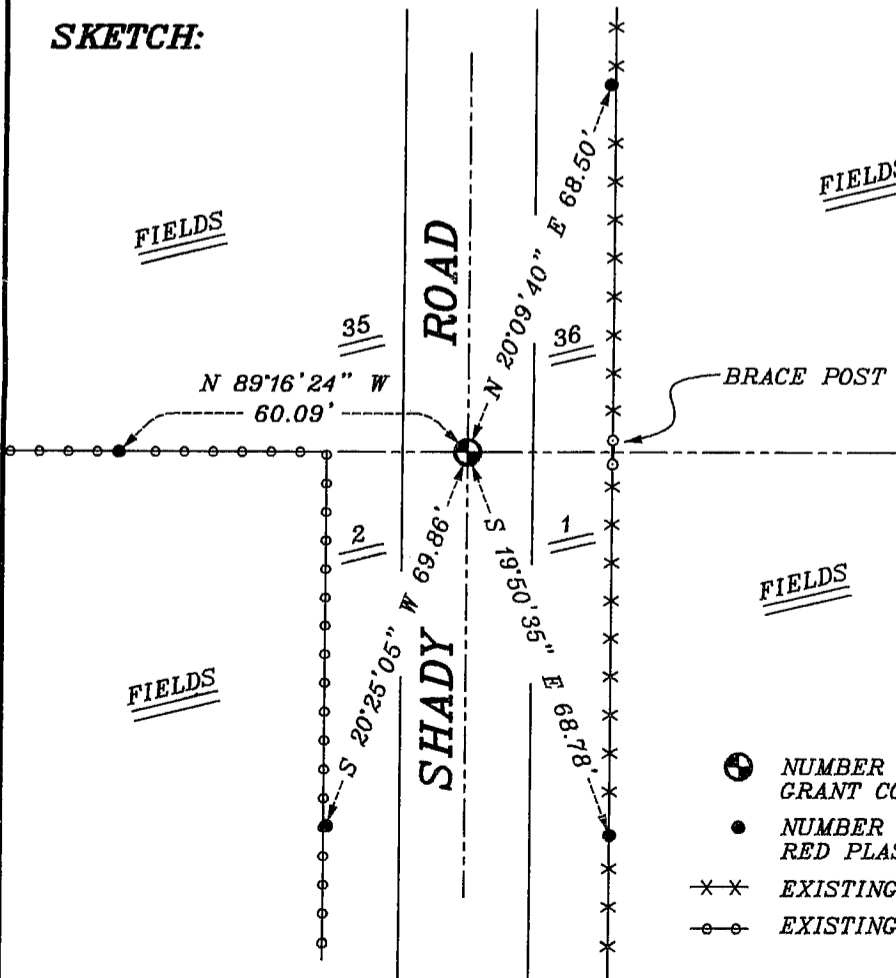
CORNER WAS SET IN 1832 BY LUCUIS LYON. NO OTHER RECORD OF THE CORNER WAS FOUND.

DESCRIPTION OF CORNER EVIDENCE FOUND:

I SET THE CORNER IN THE CENTERLINE OF A ROAD NORTH-SOUTH AND ONLINE WITH FENCE WEST. VERIFIED THIS LOCATION USING E.D.M. AND G.P.S. METHODS.

DESCRIPTION OF CORNER AND WITNESS MONUMENTS, REFERENCES AND ACCESSORIES USED TO PERPETUATE THE ORIGINAL OR RE-ESTABLISHED LOCATION OF THIS CORNER:
WITNESS TO THE CORNER LOCATION: BOBBY SEDGWICK ; SHELBY BLINDERT

SKETCH:



LEGEND

- ⊕ NUMBER 8 X 30" REBAR SET WITH GRANT COUNTY ALUMINUM CAP
- NUMBER 4 X 24" REBAR SET WITH RED PLASTIC CAP
- ×× EXISTING FENCE LOCATION
- EXISTING ELECTRIC FENCE LOCATION