

MAY 25 1990

# GRANT COUNTY

## GOVERNMENT CORNER RECORD

S 1/4 CORNER, SECTION 33, TOWNSHIP 4 NORTH, RANGE 1 ~~EAST~~ - WEST,  
TOWN, CITY OR VILLAGE OF LIMA, RICHLAND CO.

TYPE OF MONUMENT: 3/4" IRON ROD SET ELEVATION - M.S.L. DATUM \_\_\_\_\_

STATE PLANE COORDINATES: N \_\_\_\_\_

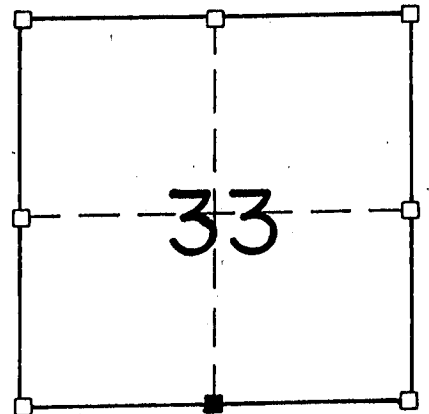
WISCONSIN SOUTH ZONE E \_\_\_\_\_

WITNESSES TO CORNER LOCATION

SEAN M. WALSH

PATRICK J. DEDERICH

SECTION 33, T 4 N, R 1 W  
TOWN OF LIMA



■ - CORNER LOCATION  
● - 3/4" IRON ROD SET

NORTH

TIE SKETCH  
(SHOW ALL HELPFUL FEATURES)

TOWN OF LIMA

FIELD

GRAVEL

DRIVE

N 1/4 COR. SEC. 4  
T 3 N, R 1 W  
3/4" IRON ROD SET

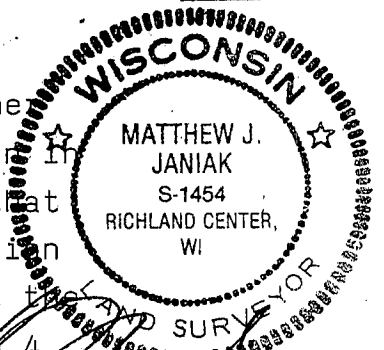
FIELD

TOWN OF PLATTVILLE

SURVEYOR'S CERTIFICATE  
STATE OF WISCONSIN)  
RICHLAND COUNTY )SS

SEAL S-1454

I, Matthew J. Janiak, DO HEREBY CERTIFY THAT the above corner  
has been established under my direction and supervision in  
accordance with the information contained hereon and that  
this information is correct to the best of my information  
knowledge and belief. This location was established at the  
correction distance from the North 1/4 corner of section 4  
and at proportionate distance from the next corner to the East.



DATED THIS 16TH DAY OF MAY, 19 90

REGISTERED LAND SURVEYOR

CORNER CODE

128

MAY 25 1990

# GRANT COUNTY

## GOVERNMENT CORNER RECORD

N 1/4 CORNER, SECTION 4, TOWNSHIP 3 NORTH, RANGE 1 WEST  
TOWN, CITY OR VILLAGE OF PLATTEVILLE, RICHLAND CO.

TYPE OF MONUMENT: 3/4" IRON ROD SET ELEVATION-M.S.L. DATUM \_\_\_\_\_

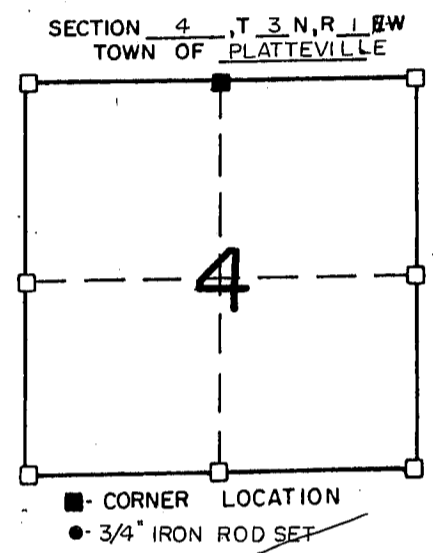
STATE PLANE COORDINATES: N \_\_\_\_\_

WISCONSIN SOUTH ZONE E \_\_\_\_\_

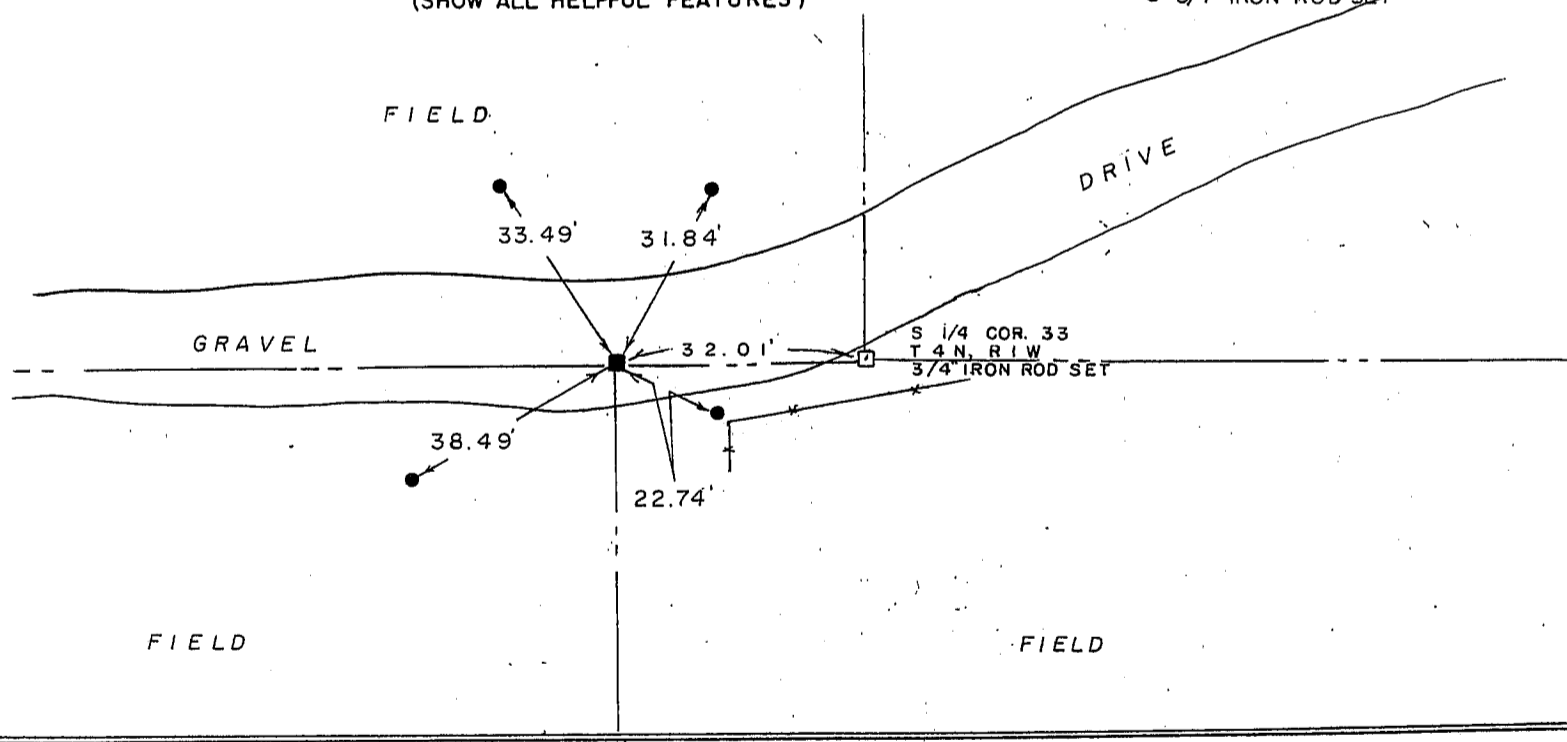
WITNESSES TO CORNER LOCATION

SEAN M. WALSH

PATRICK J. DEDERICH



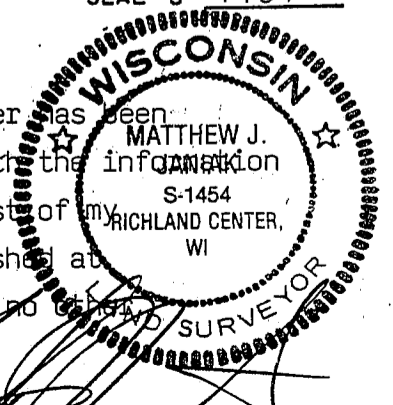
TIE SKETCH  
(SHOW ALL HELPFUL FEATURES)



SURVEYOR'S CERTIFICATE  
STATE OF WISCONSIN)  
RICHLAND COUNTY )SS

SEAL S-1454

I, Matthew J. Janiak, DO HEREBY CERTIFY THAT the above corner has been established under my direction and supervision in accordance with the information contained hereon and that this information is correct to the best of my information, knowledge and belief. this corner has been established at proportionat distances from the nearest adjoining corners after no other evidence could be located, either record or physical.



DATED THIS 16TH DAY OF MAY, 1990

REGISTERED LAND SURVEYOR

CORNER CODE

