

MAY 25 1990

# GRANT COUNTY

## GOVERNMENT CORNER RECORD

NE CORNER, SECTION 4, TOWNSHIP 3 NORTH, RANGE 1 EAST - WEST,  
TOWN, CITY OR VILLAGE OF PLATTEVILLE, RICHLAND CO.

TYPE OF MONUMENT: 3/4" X 24" IRON ROD PLACED ELEVATION - M.S.L. DATUM \_\_\_\_\_

STATE PLANE COORDINATES: N \_\_\_\_\_

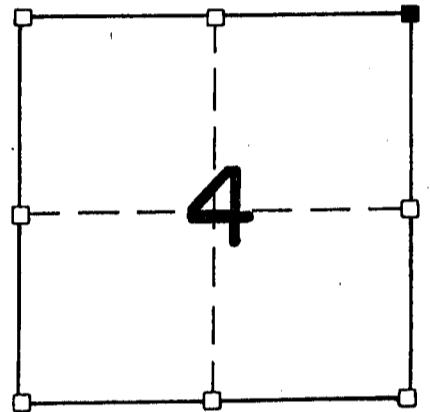
WISCONSIN SOUTH ZONE E \_\_\_\_\_

WITNESSES TO CORNER LOCATION

SEAN M. WALSH

PATRICK J. DEDERICH

SECTION 4, T 3 N, R 2 EW  
TOWN OF PLATTEVILLE



■ - CORNER LOCATION  
○ - 3/4" X 24" IRON ROD PLACED

NORTH

TIE SKETCH  
(SHOW ALL HELPFUL FEATURES)

FIELD

FIELD

DRAINAGE DITCH

FIELD

FIELD

7.09'

CHISELED CROWS FOOT  
ON ROCK

28.53'

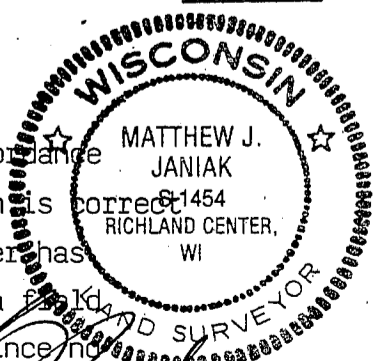
14.83'

19.61'

SURVEYOR'S CERTIFICATE  
STATE OF WISCONSIN )  
RICHLAND COUNTY ) SS

SEAL S- 1454

I, Matthew J, Janiak, DO HEREBY CERTIFY THAT the above corner  
has been established under my direction and supervision in accordance  
with the information contained hereon and that this information is correct  
to the best of my knowledge, information and belief. this corner has  
been established at the intersection of existing fences after a field  
traverse revealed that this was the most acceptable location since no  
other evidence could be located, record or physical.



DATED THIS 16TH DAY OF MAY, 19 90

REGISTERED LAND SURVEYOR

CORNER CODE

127