

MAY 25 1990

GRANT COUNTY

GOVERNMENT CORNER RECORD

SW CORNER, SECTION 33, TOWNSHIP 4 NORTH, RANGE 1 EAST - WEST,
TOWN, CITY OR VILLAGE OF LIMA, RICHLAND CO.

TYPE OF MONUMENT: 3/4" IRON ROD SET ELEVATION - M.S.L. DATUM _____

STATE PLANE COORDINATES: N _____

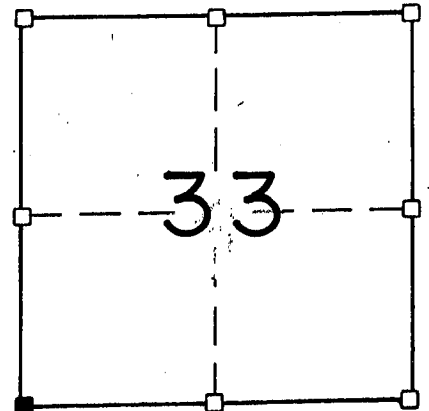
WISCONSIN SOUTH ZONE E _____

WITNESSES TO CORNER LOCATION

SEAN M. WALSH

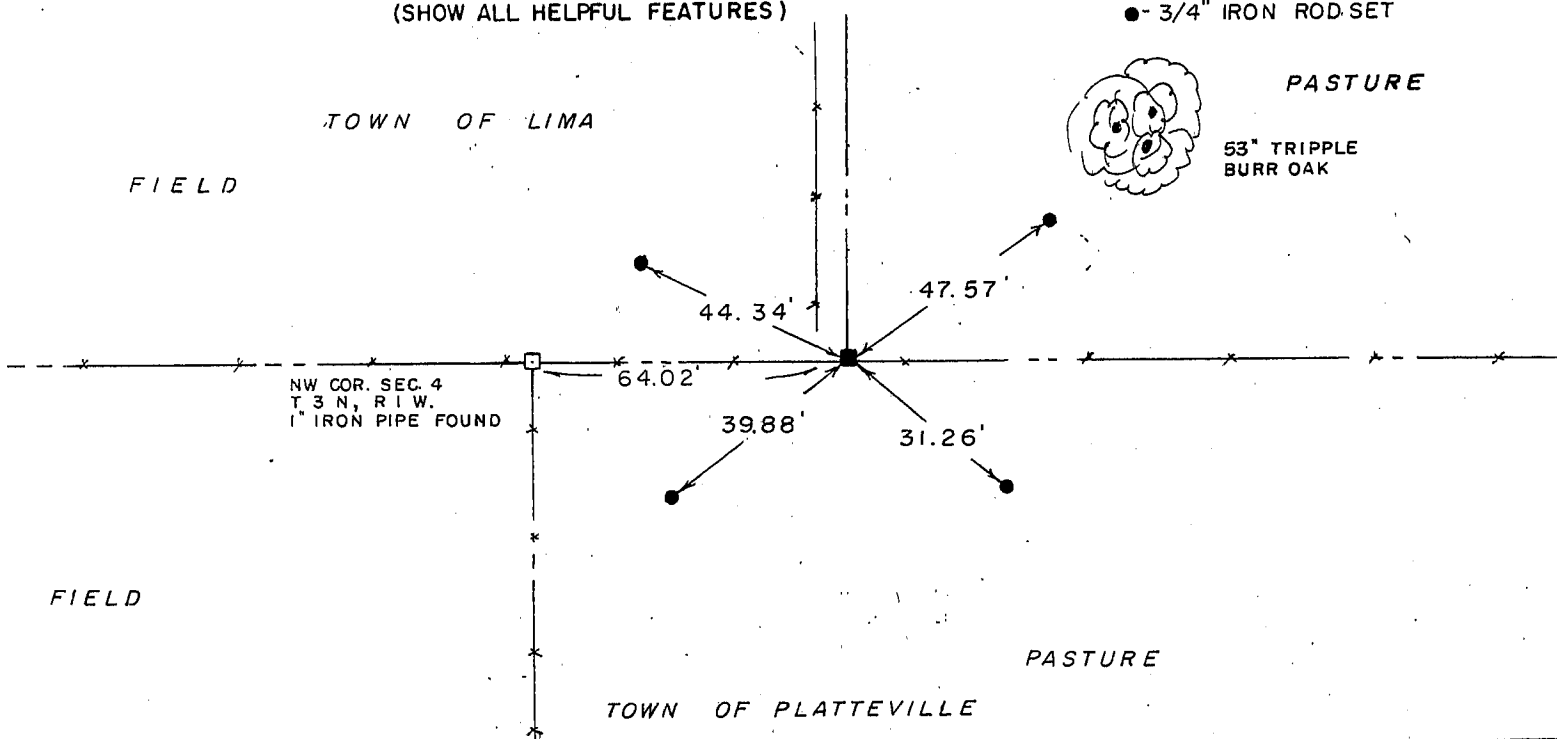
PATRICK J. DEDERICH

SECTION 33, T. 4 N, R. 1 EW
TOWN OF LIMA



■ - CORNER LOCATION
● - 3/4" IRON ROD SET

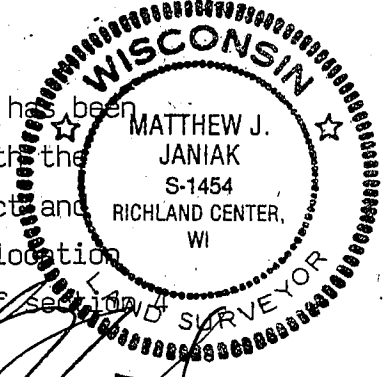
TIE SKETCH
(SHOW ALL HELPFUL FEATURES)



SURVEYOR'S CERTIFICATE
STATE OF WISCONSIN)
RICHLAND COUNTY)SS

SEAL S-1454

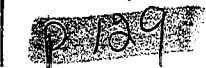
I, Matthew J. Janiak, DO HEREBY CERTIFY THAT the above corner has been
established under my direction and supervision in accordance with the
information contained hereon and that this information is correct and
true to the best of my information, knowledge and belief. this location
was established at the correction distance from the NW corner of section 4
along the North line of Section 4 as traversed.



DATED THIS 16TH DAY OF MAY, 1990

REGISTERED LAND SURVEYOR

CORNER CODE



MAY 25 1990

RE

GRANT COUNTY

GOVERNMENT CORNER RECORD

NORTHWEST CORNER, SECTION 4, TOWNSHIP 3 NORTH, RANGE 1 EAST - WEST,
TOWN, CITY OR VILLAGE OF PLATTEVILLE, RICHLAND CO.

TYPE OF MONUMENT: 1" IRON PIPE FOUND ELEVATION - M.S.L. DATUM _____

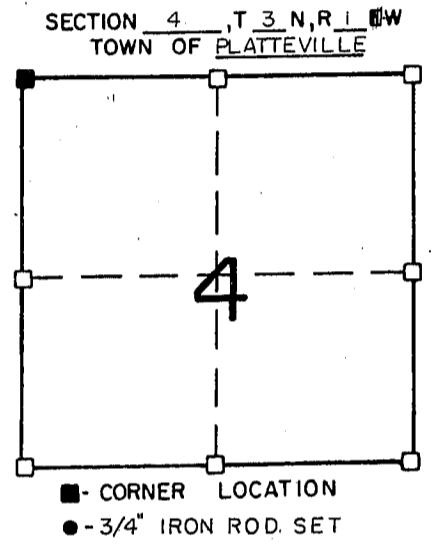
STATE PLANE COORDINATES: N _____

WISCONSIN SOUTH ZONE E _____

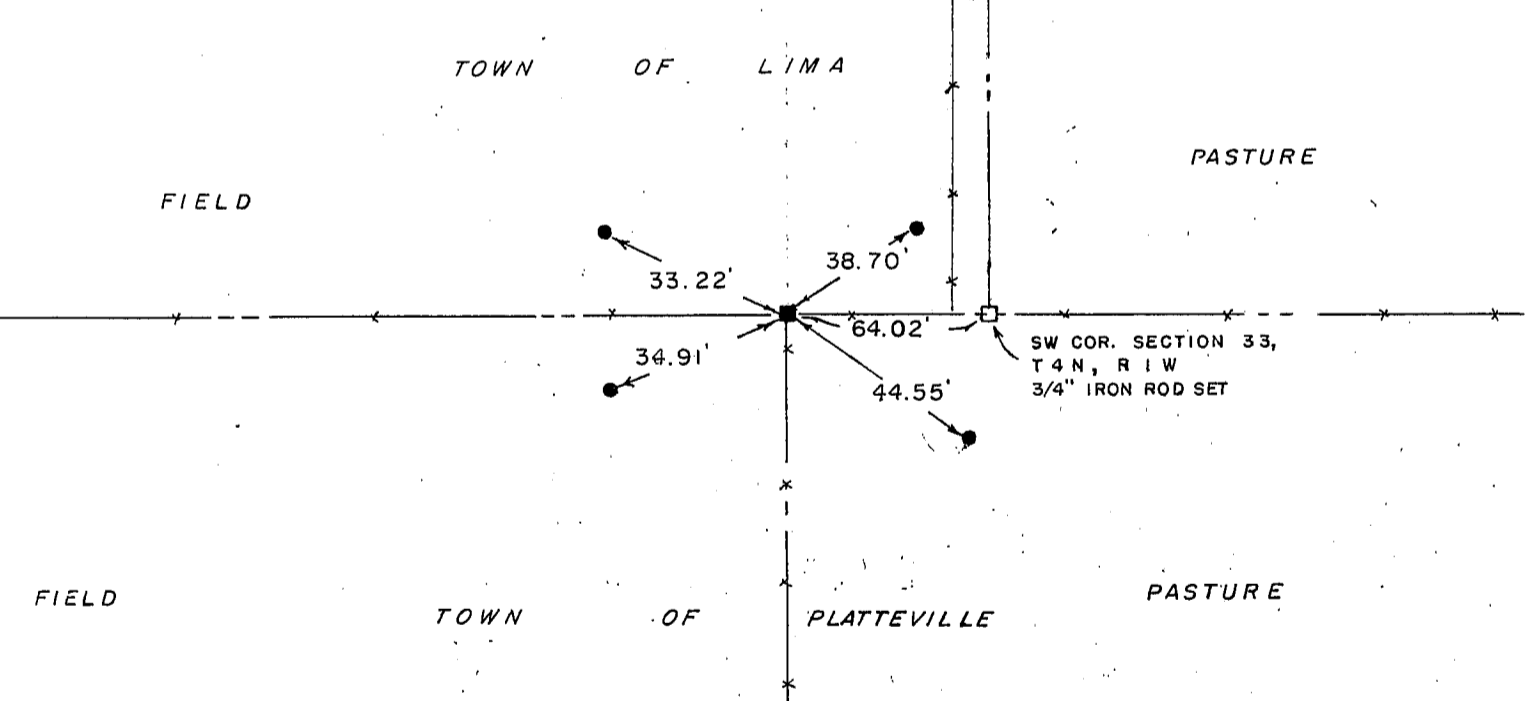
WITNESSES TO CORNER LOCATION

SEAN M. WALSH

PATRICK J. DEDERICH



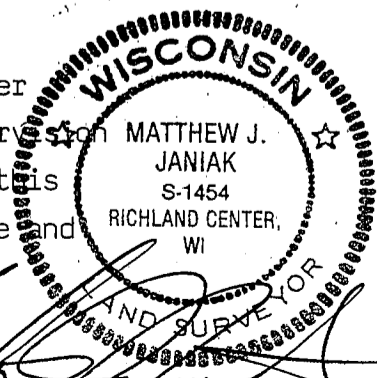
TIE SKETCH
(SHOW ALL HELPFUL FEATURES)



SURVEYOR'S CERTIFICATE
STATE OF WISCONSIN)
RICHLAND COUNTY) SS

SEAL S-1454

I, Matthew J. Janiak, DO HEREBY CERTIFY THAT the above corner
has been accepted and perpetuated under my direction and supervision
in accordance with the information contained hereon and that this
information is correct to the best of my information knowledge and
belief.



DATED THIS 16TH DAY OF MAY, 19 90

REGISTERED LAND SURVEYOR

CORNER CODE

