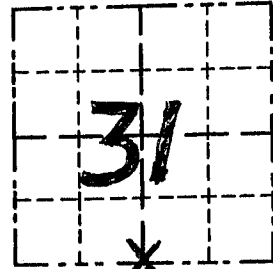


GRANT COUNTY

Survey Monument Record

CORNER NO. 132
 SECTION 31
 TOWN 4 N
 RANGE 1 W

TYPE OF MONUMENT COUNTY MONUMENT SET
 STATE PLANE COORDINATES: N _____
 E _____
 ELEVATION — M.S.L. DATUM: _____
 THETA ANGLE: _____
 FIELD BOOK: 94-19
 PAGE _____



LOCATION
 (Indicated by "X")

BASIS FOR MONUMENT LOCATION

(Use reverse side if necessary)

Show info such as: History of corner, with reference to Vol. and pg., dates, surveyor; exact description of monument replaced; if location computed, by taped or EDM traverse; landowner, remarks, etc.

SEAL:

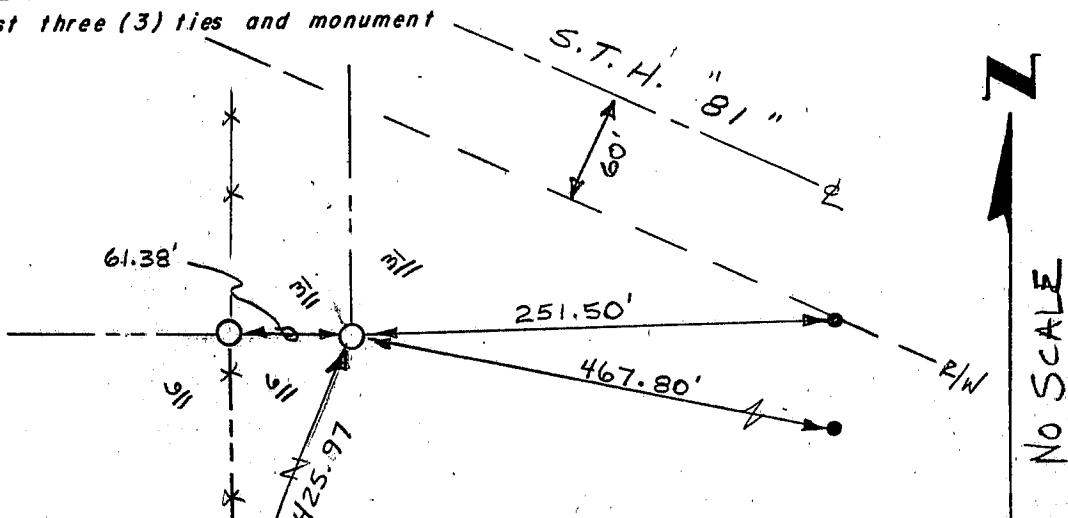
CORNER ORIGINALLY EST. IN 1832 BY SIBLEY; BOWDEN SET A 2" IRON PIPE AT CORNER IN 1985; CORNER WAS LOST APPARENTLY FROM EXCAVATION IN THE AREA. I RE-ESTABLISHED ITS LOCATION BASED ON BOWDEN'S TIE SHEET, & VERIFIED BY EDM TRAVERSE OF THE AREA.

CERTIFIED, CORRECT

Sally L. Rust
 Registered Land Surveyor
 DATE: 4/12/95

TIE SKETCH

Show at least three (3) ties and monument



LEGEND

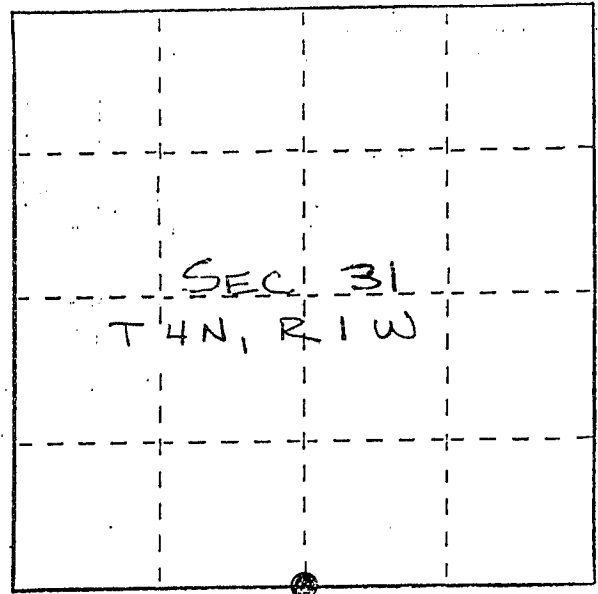
- GRANT COUNTY ALUMINUM MONUMENT
- EXISTING 1" IRON PIPE
- ✕✕ EXISTING FENCE

U. S. PUBLIC LAND SURVEY MONUMENT RECORD

INSTRUCTIONS: This record shall show the location of the corner and shall include all of the following nine elements (a through i).

- (a) Identify the corner by reference to the U.S. public land survey system.
- = Corner monument restored.

S 1/4 CORNER, SEC. 31
T4N, R1W, LIMA TWP.
GRANT COUNTY, WISC.

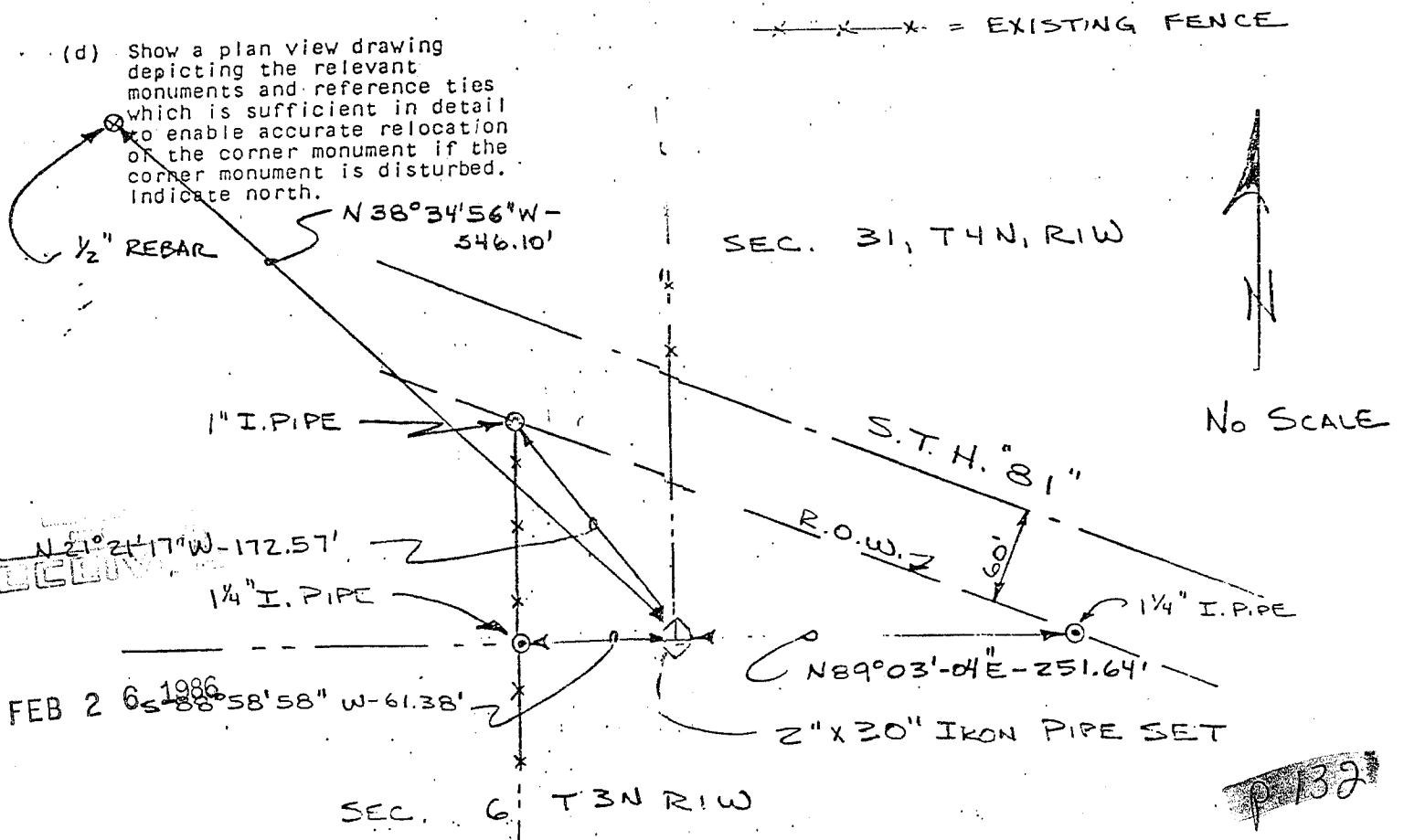


- (b) Describe any record evidence, monument evidence, occupational evidence, testimonial evidence or any other material evidence you considered, and whether the monument was found or placed.

MONUMENT SET FROM ORIGINAL GOVERNMENT OFFSET DISTANCE FROM EXISTING IRON PIPE AT N 1/4 CORNER OF SEC. 6, T3N, R1W. NO OTHER RECORD OF CORNER SINCE ORIGINAL GOVERNMENT SURVEY.

- (c) In the plan view drawing below, provide reference ties to at least 4 witness monuments, or, if the location is within a municipality, to at least 2 witness monuments. (Witness monuments shall be made of concrete, natural stone, iron or other equally durable material.) Describe witness monuments.

- (d) Show a plan view drawing depicting the relevant monuments and reference ties which is sufficient in detail to enable accurate relocation of the corner monument if the corner monument is disturbed. Indicate north.



(e) Describe any material discrepancy between the location of the corner as restored or reestablished and the location of that corner as previously restored or reestablished by distance and direction. Show the discrepancy on the plan view drawing under (d), above. Show the distances between the corner as previously restored or reestablished and (1) the corner as restored or reestablished, and (2) to at least 2 of the witness monuments shown on the drawing in (d), above.

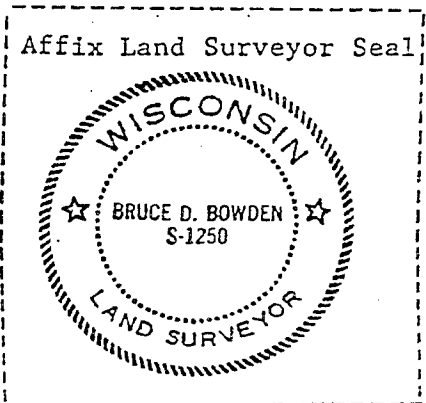
NONE

(f) Was the corner restored through acceptance of (1) an obliterated evidence location, or, (2) a found perpetuated location?

AN OBLITERATED EVIDENCE LOCATION

(g&h) Was the corner reestablished through lost corner proportionate methods? If so, show the method, including the directions and distances to other public land survey corners used as evidence or used for proportioning in determining the corner location?

No



(i) I, Bruce D. Bowden
(type or print name) certify that the corner location shown on this record was determined by me or under my direction and control and that this U.S. Public Land Survey Monument Record is correct and complete to the best of my knowledge and belief.

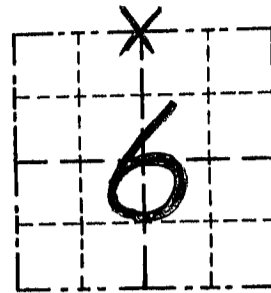
Bruce D. Bowden Dec 14, 1985
Signature Date

GRANT COUNTY

Survey Monument Record

TYPE OF MONUMENT ALUM. MONUMENT
 STATE PLANE COORDINATES: N _____
 E _____
 ELEVATION — M.S.L. DATUM: _____
 THETA ANGLE: _____
 FIELD BOOK: _____
 PAGE _____

CORNER NO. 12
 SECTION 6
 TOWN 3 N
 RANGE 1 W



LOCATION
 (Indicated by "X")

BASIS FOR MONUMENT LOCATION

(Use reverse side if necessary)

Show info such as: History of corner, with reference to Vol. and pg., dates, surveyor; exact description of monument replaced; if location computed, by taped or EDM traverse; landowner, remarks, etc.

SEAL:

CORNER USED BY JOHN ORTH IN 1979 & RICHARD OSBORN ON UNDATED SURVEY TIE SHEET FILED FOR THIS CORNER IN 1985; CORNER WAS NOT FOUND; I RESET THE CORNER BASED ON BOWDREN SURVEY & TIES TO IT.

CERTIFIED CORRECT

Nancy R. Rust
 Registered Land Surveyor

DATE: 4/12/95

TIE SKETCH

Show at least three (3) ties and monuments

