

MAR 24 2000

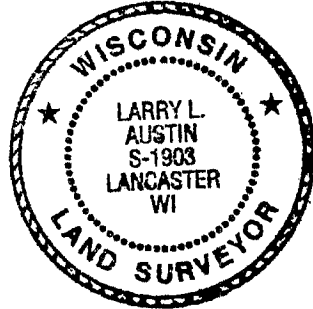
GRANT COUNTY CERTIFIED LAND CORNER

CERTIFICATE:

I, Larry L. Austin, do hereby certify that on the 14th day of July, 1999, I found no evidence of the Southeast corner of Section 31, Town 4 North, Range 1 West, of the Fourth Principal Meridian, and I re-established said corner according to the Wisconsin Statutes as shown and described hereon.

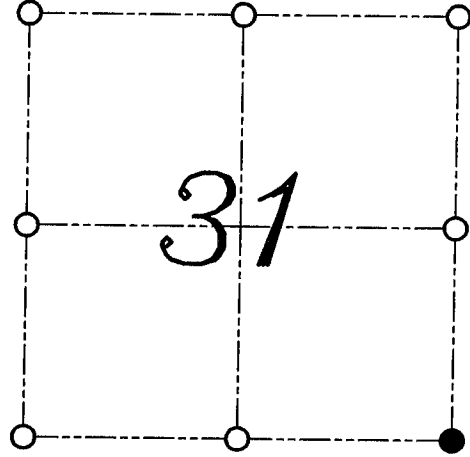
DATED THIS 3rd DAY OF FEBRUARY, 2000

Larry L. Austin
Larry L. Austin S-1903



SEAL

CORNER NUMBER 131



● = CORNER LOCATION

**SOUTHEAST CORNER OF
SECTION 31, T 4 N R 1 W
TOWN OF LIMA**

HISTORY OF ORIGINAL CORNER ESTABLISHMENT:

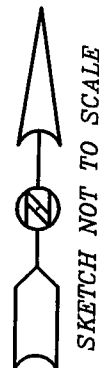
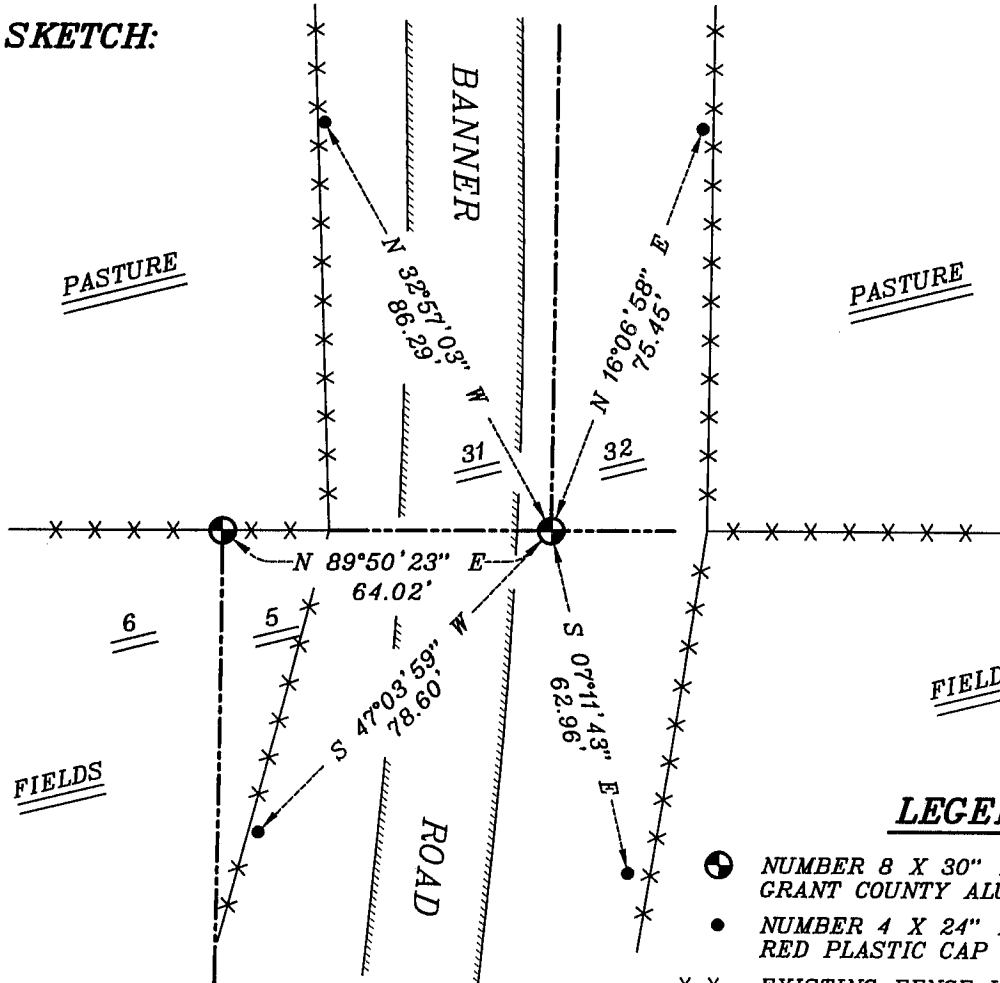
Corner was originally set in 1832 by Sibley.
In 1847 Geo Stuntz tied to the corner.
No Mention of monument type.

DESCRIPTION OF CORNER EVIDENCE FOUND:

I found no evidence of the original corner. I reset the corner based on a single proportion between the monumented South 1/4 of Section 31 and the occupied South 1/4 of Section 32. Verified this location using E.D.M. and G.P.S. methods.

DESCRIPTION OF CORNER AND WITNESS MONUMENTS, references and accessories used to perpetuate the original or re-established location of this corner
WITNESS TO THE CORNER LOCATION: BOBBY SEDGWICK ; SHELBY BLINDERT

SKETCH:



LEGEND

- NUMBER 8 X 30" REBAR SET WITH GRANT COUNTY ALUMINUM CAP
- NUMBER 4 X 24" REBAR SET WITH RED PLASTIC CAP
- **-** EXISTING FENCE LOCATION

MAR 24 2000

GRANT COUNTY CERTIFIED LAND CORNER

CERTIFICATE:

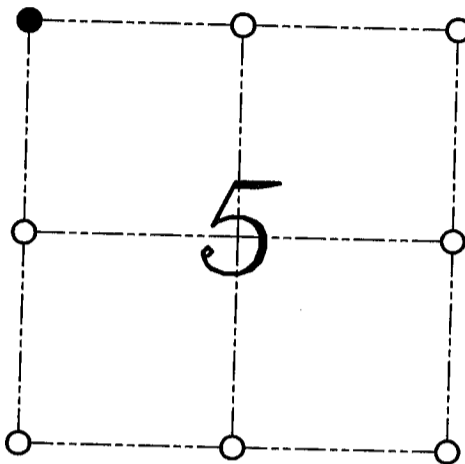
I, Larry L. Austin, do hereby certify that on the 14th day of July, 1999, I found no evidence of the Northwest corner of Section 05, Town 3 North, Range 1 West, of the Fourth Principal Meridian, and I re-established said corner according to the Wisconsin Statutes as shown and described hereon.

DATED THIS 3rd DAY OF FEBRUARY, 2000

Larry L. Austin
Larry L. Austin S-1903



CORNER NUMBER 11



● = CORNER LOCATION

NORTHWEST CORNER OF
SECTION 05, T 3 N R 1 W
TOWN OF PLATTEVILLE

HISTORY OF ORIGINAL CORNER ESTABLISHMENT:

Corner was originally set in 1833 by Robert Clark. In 1891 Sampson tied to the corner. Stuntz tied to the corner also.

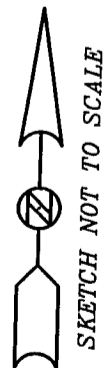
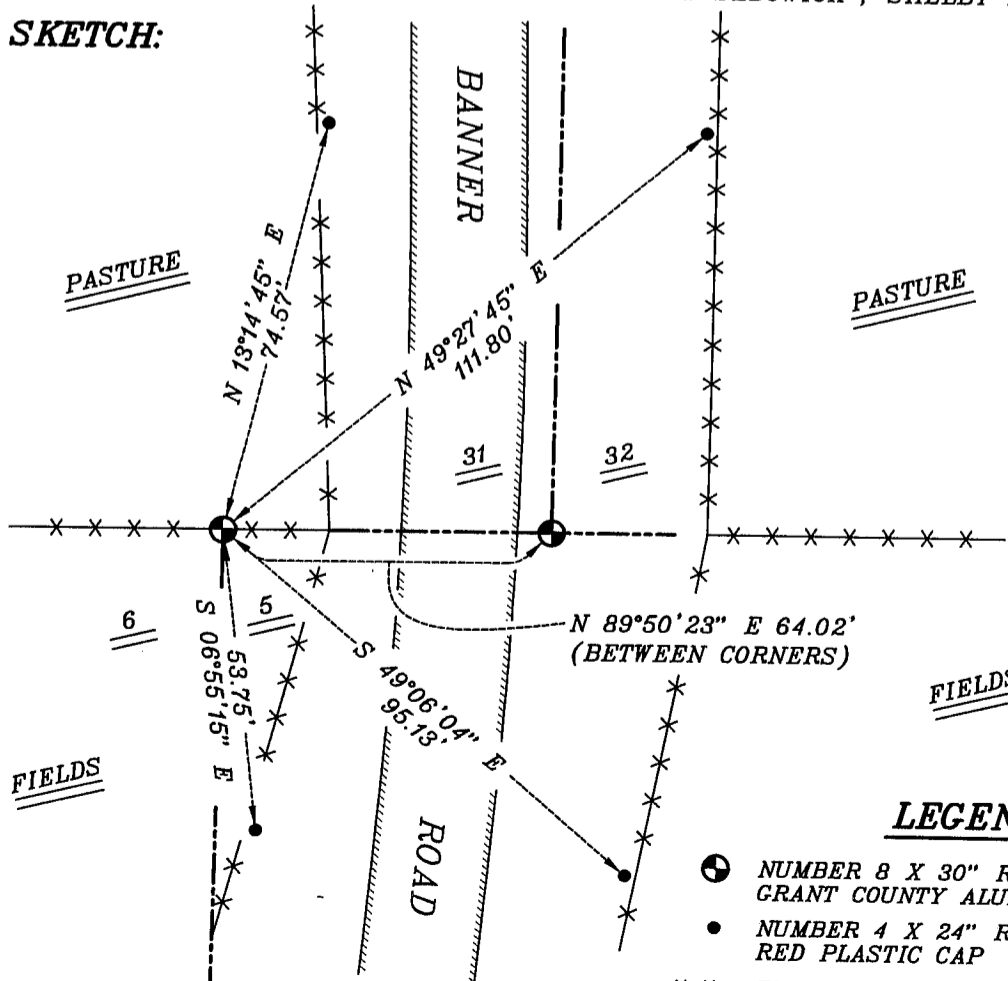
DESCRIPTION OF CORNER EVIDENCE FOUND:

I found no evidence of the location of the corner. I reset the corner at the recorded offset from the Southeast corner of Section 31, T4N R1W. Verified this location using E.D.M. and G.P.S. methods.

DESCRIPTION OF CORNER AND WITNESS MONUMENTS, references and accessories used to perpetuate the original or re-established location of this corner

WITNESS TO THE CORNER LOCATION: BOBBY SEDGWICK ; SHELBY BLINDERT

SKETCH:



LEGEND

- NUMBER 8 X 30" REBAR SET WITH GRANT COUNTY ALUMINUM CAP
- NUMBER 4 X 24" REBAR SET WITH RED PLASTIC CAP
- ××× EXISTING FENCE LOCATION