

U.S. PUBLIC LAND SURVEY MONUMENT RECORD - GRANT COUNTY, WI

Section 29, Town 4 North Range 1 West, Town of Lima (a)

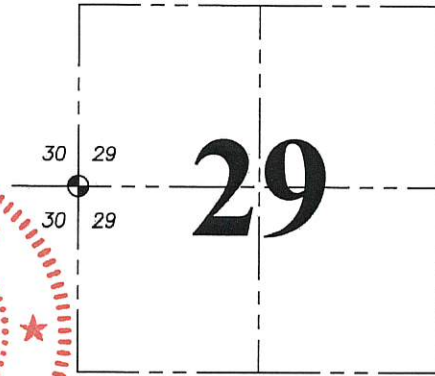
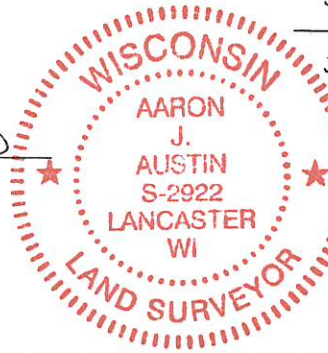
NOTE: This form is intended and designed to fulfill all requirements of the Wisconsin Administrative Code Chapter A-E 7.08, U.S. Public Land Survey Monument Record (3) (a) (b) (c) (d) (e) (f) (g) (h) (i).

CERTIFICATE: (i)

I, Aaron J. Austin, Wisconsin Professional Land Surveyor, do hereby certify that the corner location on this record was determined by me and/or under my direct supervision and that this U.S. Public Land Survey Monument Record is correct and complete to the best of my knowledge and belief.

Dated this 4th day of May, 2017.

Aaron J. Austin
Aaron J. Austin, S-2922



⊕ = CORNER LOCATION

Grant County Coordinates:
NAD 83 (2011)
Northing: 503011.99
Easting: 868665.48

HISTORY OF CORNER ESTABLISHMENT:

Robert Clark set the original corner in 1833.
Larry Austin reset the corner and prepared a Survey Monument Record dated 5-30-1997.

DESCRIPTION OF CORNER EVIDENCE FOUND: (b) (f) (g) (h)

The Railroad Spike was found as set by Larry Austin. I found one witness corner and set three new ones after I verified it's location with G.P.S. and E.D.M. methods

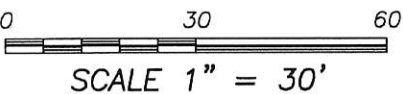
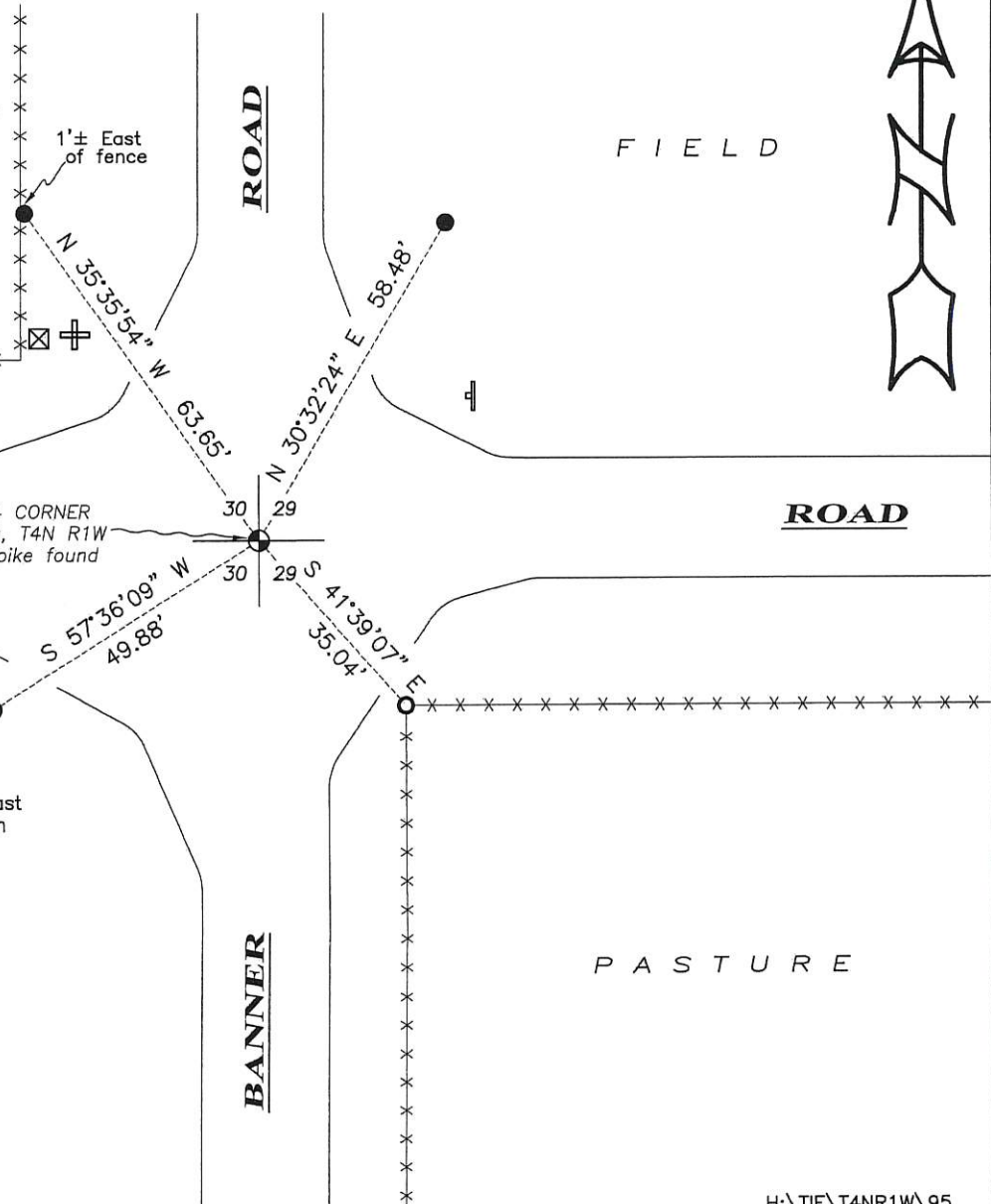
DESCRIPTION OF CORNER AND WITNESS MONUMENTS, references and accessories used to perpetuate the original or re-established location of this corner. (c) (d) (e)

Witnesses to corner location Shane Austin.

SKETCH:

LEGEND

- ⊕ Section Corner—as designated
- 3/4" rebar found
- 3/4" x 18" rebar set
- x-x- Existing fence
- ⊕ Existing sign
- ⊠ Underground pedestal

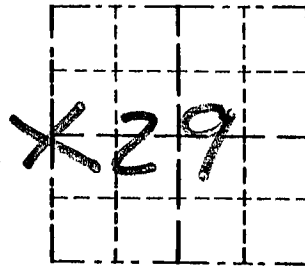


Survey Monument Record

TYPE OF MONUMENT RAILROAD SPIKE

CORNER NO. 95
 SECTION 29
 TOWN 4N
 RANGE 1W

FIELD BOOK: 97-04
 PAGE _____



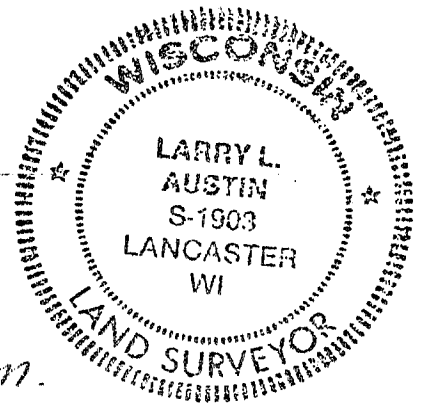
BASIS FOR MONUMENT LOCATION

(Use reverse side if necessary)

Show info such as: History of corner, with reference to Vol. and pg., dates, surveyor; exact description of monument replaced; if location computed, by taped or EDM traverse; landowner, remarks, etc.

LOCATION
 (Indicated by "X")

SEAL:



CORNER SET IN 1833 BY
 ROBERT CLARK. NO RECORD FOUND
 SINCE ORIGINAL SURVEYS; CORNER
 WAS SET AT CENTERLINE / CENTERLINE
 OF REXS ROAD AND BANNER ROAD.
 VERIFIED ITS LOCATION USING EDM
 METHODS.

CERTIFIED CORRECT

Larry L. Austin
 Registered Land Surveyor

DATE: 5/30/97

TIE SKETCH

Show at least three (3) ties and monument

LEGEND

- RAILROAD SPIKE
- 1/2" X 15" IRON BAR SET
- RAILROAD SPIKE AND POWER POLE
- EXISTING FENCE

