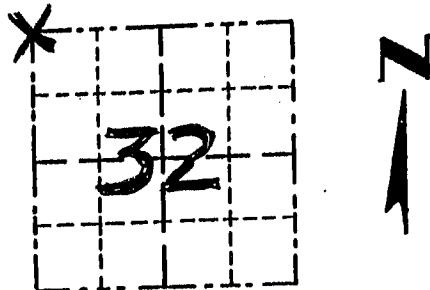


GRANT COUNTY

Survey Monument Record

TYPE OF MONUMENT RAILROAD SPIKE FOUND
 STATE PLANE COORDINATES: N _____
 E _____
 ELEVATION — M.S.L. DATUM: _____
 THETA ANGLE: _____
 FIELD BOOK: _____
 PAGE _____

CORNER NO. 111
 SECTION 32
 TOWN 4 N
 RANGE 1 W
NW COR



LOCATION
(Indicated by "X")

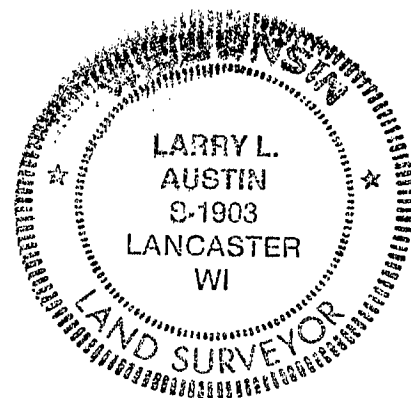
BASIS FOR MONUMENT LOCATION

(Use reverse side if necessary)

Show info such as: History of corner, with reference to Vol. and pg., dates, surveyor; exact description of monument replaced; if location computed, by taped or EDM traverse; landowner, remarks, etc.

SEAL:

ORIG. CORNER SET IN 1833 BY ROBERT CLARK
 NO RECORD OF CORNER SINCE
 ORIG. SURVEYS. FD. A RR SPIKE
 AT OCCUPIED LOCATION & VERIFIED IT
 BY EDM TRAVERSE OF THE AREA;
 THIS LOCATION FITS WELL WITH
 THAT PROPERTY DESCRIBED IN VOL 583
 AT PAGE 296, GRANT CO. REGISTRY



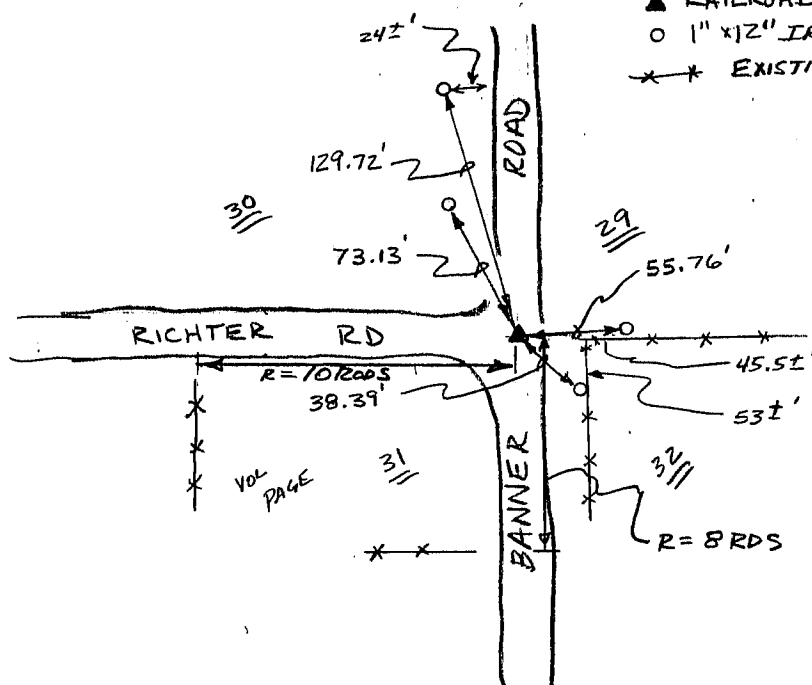
CERTIFIED CORRECT

Larry L. Austin
 Registered Land Surveyor

DATE: 2/16/95

TIE SKETCH

Show at least three (3) ties and monument



LEGEND

- ▲ RAILROAD SPIKE FOUND
- 1" x 12" IRON PIPE SET
- * * * EXISTING FENCE

NO SCALE