

U.S. PUBLIC LAND SURVEY MONUMENT RECORD – GRANT COUNTY, WI

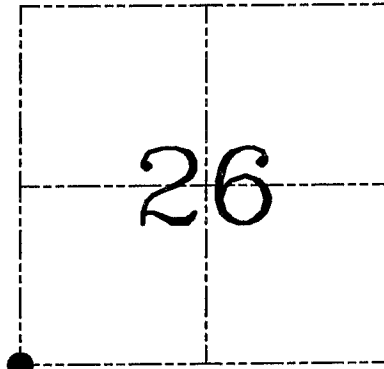
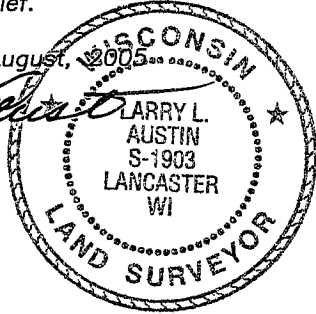
Section 26, Town 4 North Range 1 West, Town of Lima

CERTIFICATE

I, Larry L. Austin, do hereby certify that the corner location on this record was determined by me and/or under my direct supervision and that this U.S. public land survey monument record is correct and complete to the best of my knowledge and belief.

Dated this 10th day of August, 2005

Larry L. Austin
Larry L. Austin S-1903



● = CORNER LOCATION

HISTORY OF CORNER ESTABLISHMENT

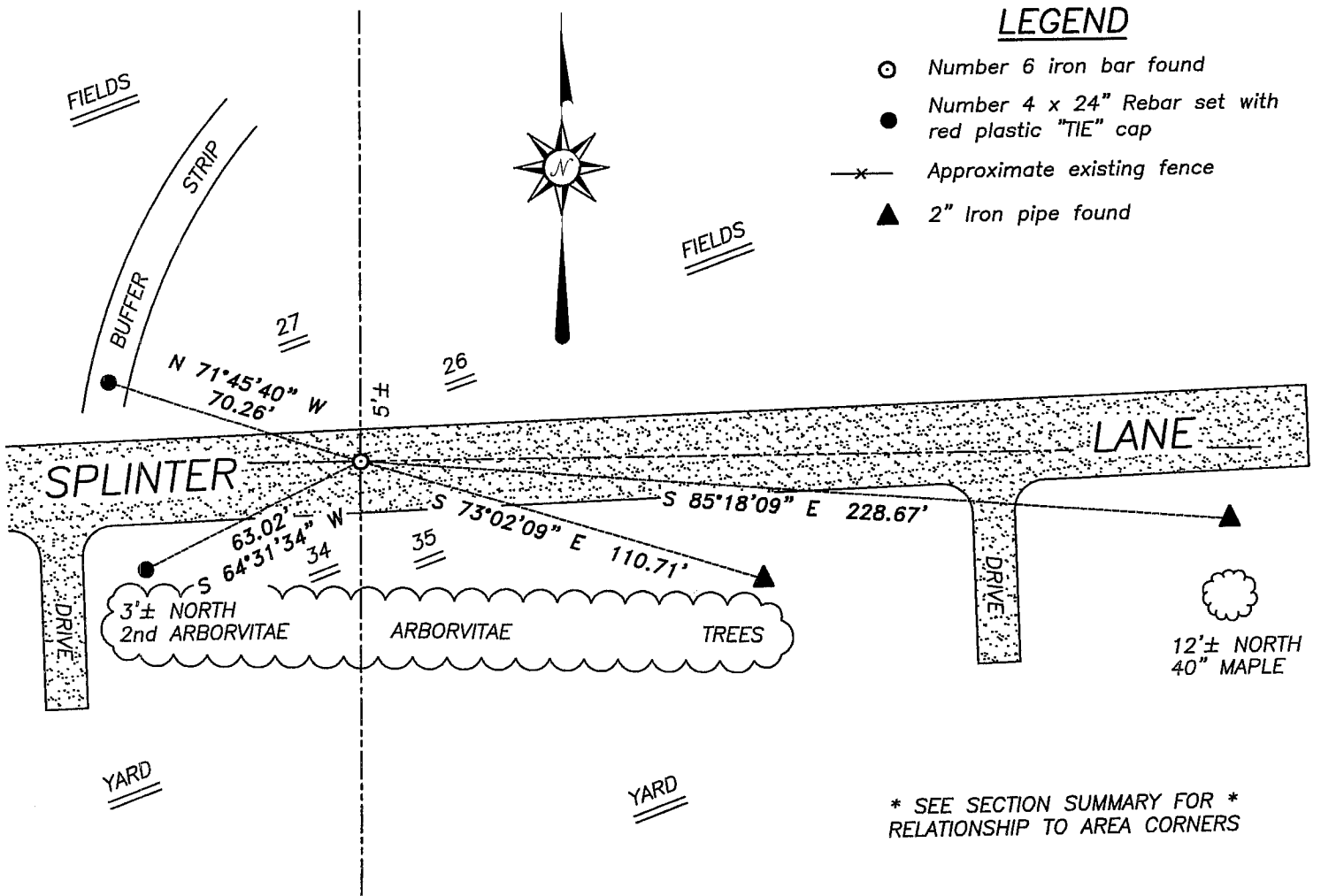
Corner was originally set in 1833 by Parke. In 1994 I set a Number 6 iron bar at this location. No other record of the corner was found.

DESCRIPTION OF CORNER EVIDENCE FOUND

I found the Number 6 iron bar with only two ties. I set two ties and accepted the corner location using EDM & GPS methods.

DESCRIPTION OF CORNER AND WITNESS MONUMENTS, references and accessories used to perpetuate the original or re-established location of this corner. Witnesses to corner location Bobby Sedgwick & Brad Digman & Shane Austin

SKETCH:



* SEE SECTION SUMMARY FOR *
RELATIONSHIP TO AREA CORNERS

SKETCH NOT TO SCALE



Austin Engineering LLC

4211 HWY 81 E, LANCASTER, WI 53813
PHONE 608-723-6363 FAX 608-723-6702

JOB NUMBER 05S050
FIELDBOOK: TDSR, 2512
G:\GRANTDOT\T3NR1W
H:\TIE\T4NR1W\105

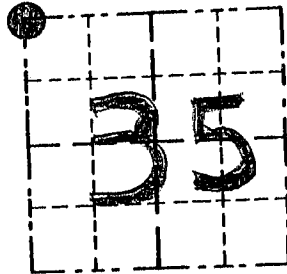
DRAWN BY: SW AUSTIN
APPROVED: LL AUSTIN

GRANT COUNTY

Survey Monument Record

TYPE OF MONUMENT 3/4" x 9" IRON BAR SET
STATE PLANE COORDINATES: N _____
E _____
ELEVATION — M.S.L. DATUM: _____
THETA ANGLE: _____
FIELD BOOK: 94-00
PAGE 1, 2

CORNER NO. _____
SECTION 35
TOWN 4 N
RANGE 1 W



LOCATION
(Indicated by "X")

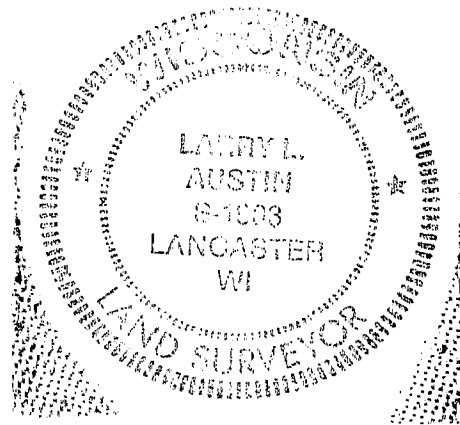
BASIS FOR MONUMENT LOCATION

(Use reverse side if necessary)

Show info such as: History of corner, with reference to Vol. and pg., dates, surveyor; exact description of monument replaced; if location computed, by taped or EDM traverse; landowner, remarks, etc.

NO MARKER FOUND AT
CORNER LOCATION; CORNER
RE-ESTABLISHED FROM FOUND
MONUMENTS FROM 1977
SURVEY BY DALE DIXON

SEAL:



CERTIFIED CORRECT

Larry L. Austin
Registered Land Surveyor
DATE: 2/1/94

TIE SKETCH

Show at least three (3) ties and monument

LEGEND

- 3/4" x 9" IRON BAR SET
- 1" IRON PIPE FND
- △ RAILROAD SPIKE USED AS TIE

