

**U.S. PUBLIC LAND SURVEY MONUMENT RECORD – GRANT COUNTY, WI**

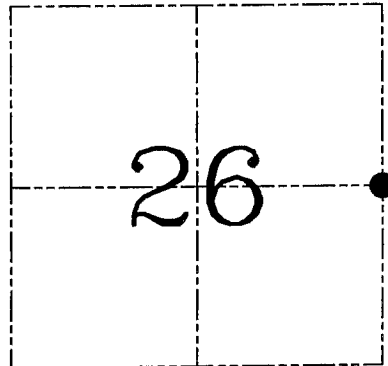
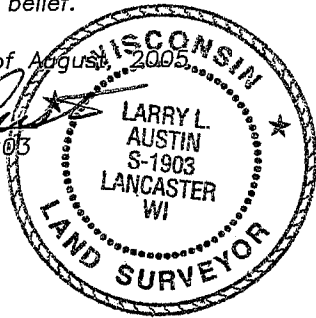
**Section 26, Town 4 North Range 1 West, Town of Lima**

CERTIFICATE

I, Larry L. Austin, do hereby certify that the corner location on this record was determined by me and/or under my direct supervision and that this U.S. public land survey monument record is correct and complete to the best of my knowledge and belief.

Dated this 10th day of August, 2005.

*Larry L. Austin*  
Larry L. Austin S-1903



● = CORNER LOCATION

HISTORY OF CORNER ESTABLISHMENT

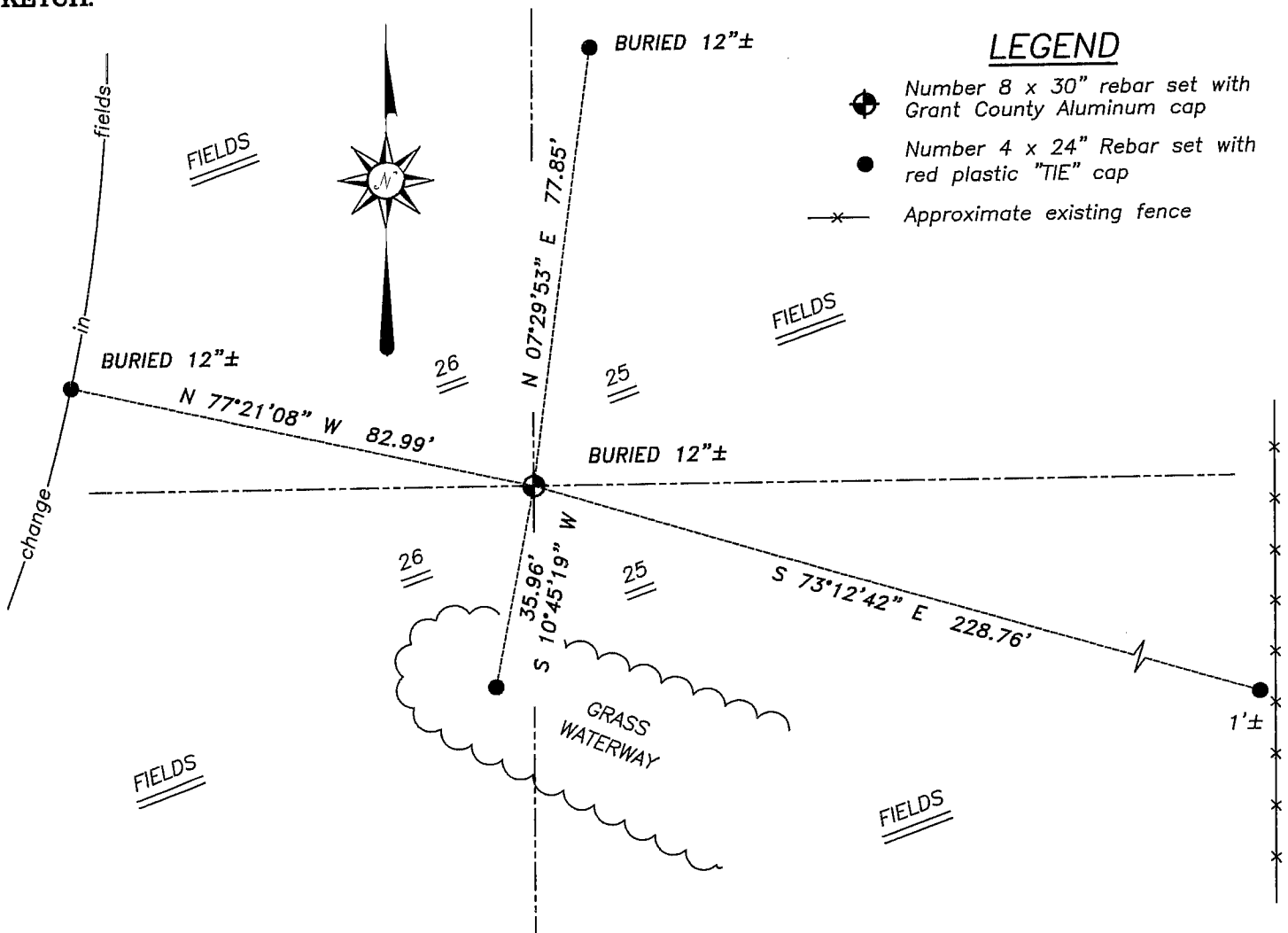
Corner was originally set in 1833 by Parke.  
No other record of the corner was found.

DESCRIPTION OF CORNER EVIDENCE FOUND

I set the corner by a single proportion between the Northeast and Southeast Corners of Section 26. Verified this location using EDM & GPS methods.

DESCRIPTION OF CORNER AND WITNESS MONUMENTS, references and accessories used to perpetuate the original or re-established location of this corner. Witnesses to corner location Bobby Sedgwick & Brad Digman & Shane Austin

**SKETCH:**



LEGEND

- Number 8 x 30" rebar set with Grant County Aluminum cap
- Number 4 x 24" Rebar set with red plastic "TIE" cap
- x- Approximate existing fence

SKETCH NOT TO SCALE



**Austin Engineering LLC**

4211 HWY 81 E, LANCASTER, WI 53813  
PHONE 608-723-6363 FAX 608-723-6702

JOB NUMBER 05S050  
FIELDBOOK: TDSR, 2512  
G:\GRANTDOT\T3NR1W  
H:\TIE\T4NR1W\99

DRAWN BY: SW AUSTIN  
APPROVED: LL AUSTIN