

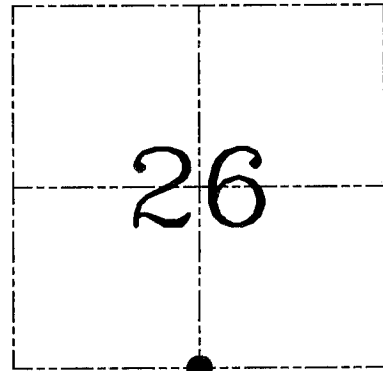
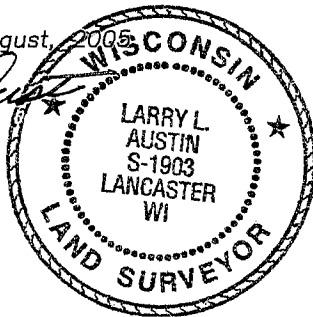
U.S. PUBLIC LAND SURVEY MONUMENT RECORD – GRANT COUNTY, WI
Section 26, Town 4 North Range 1 West, Town of Lima

CERTIFICATE

I, Larry L. Austin, do hereby certify that the corner location on this record was determined by me and/or under my direct supervision and that this U.S. public land survey monument record is correct and complete to the best of my knowledge and belief.

Dated this 10th day of August, 2005

Larry L. Austin
 Larry L. Austin S-1903



● = CORNER LOCATION

HISTORY OF CORNER ESTABLISHMENT

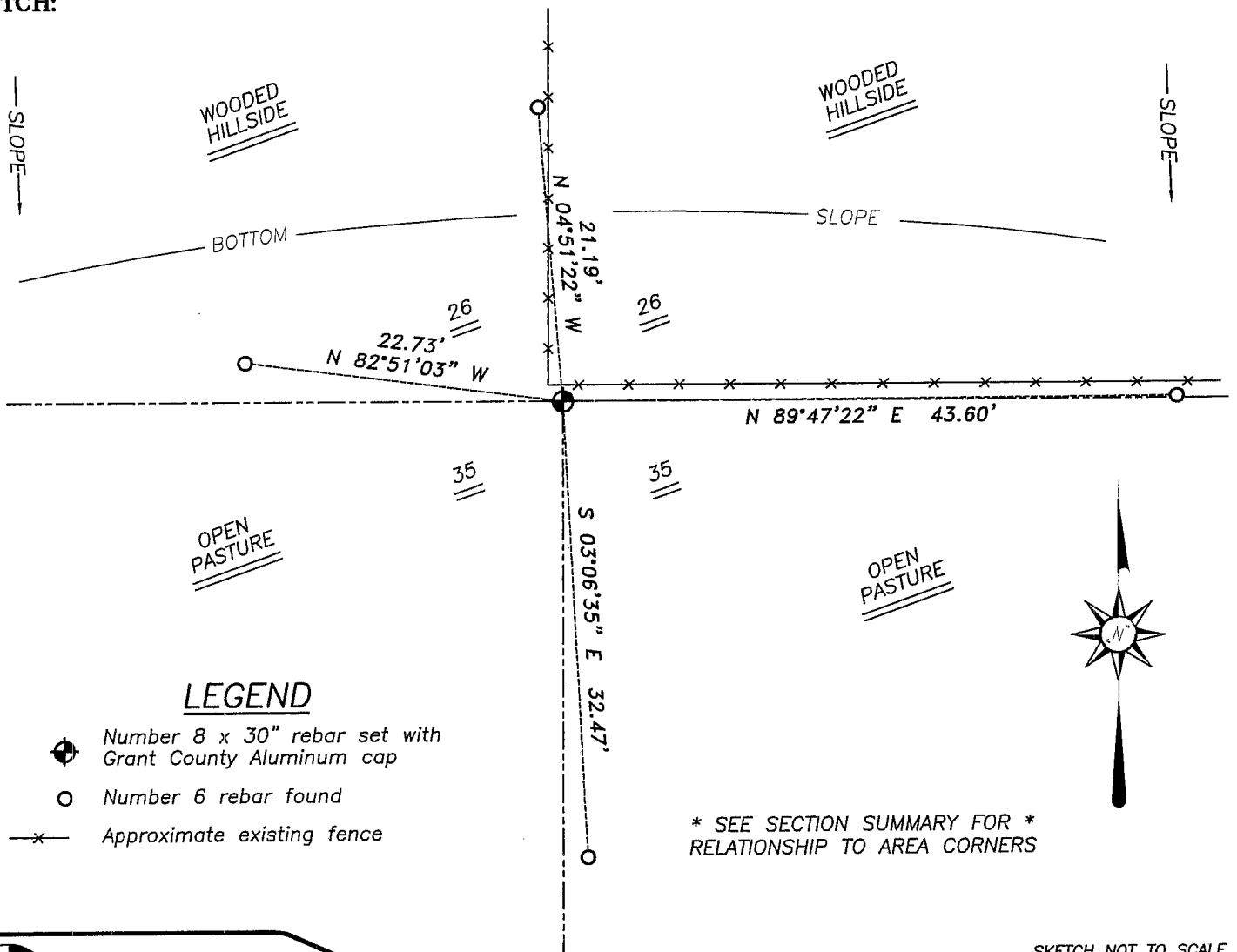
Corner was originally set in 1833 by Parke. In 1995 I set a Grant County Aluminum monument. No other record of the corner was found.

DESCRIPTION OF CORNER EVIDENCE FOUND

I was unable to locate the existing monument. I set a No 8 bar with Grant County aluminum cap based on the existing ties. Verified this location using EDM & GPS methods.

DESCRIPTION OF CORNER AND WITNESS MONUMENTS, references and accessories used to perpetuate the original or re-established location of this corner. Witnesses to corner location Bobby Sedgwick & Brad Digman & Shane Austin

SKETCH:



LEGEND

- Number 8 x 30" rebar set with Grant County Aluminum cap
- Number 6 rebar found
- x- Approximate existing fence

* SEE SECTION SUMMARY FOR *
 RELATIONSHIP TO AREA CORNERS

SKETCH NOT TO SCALE



Austin Engineering LLC

4211 HWY 81 E, LANCASTER, WI 53813
 PHONE 608-723-6363 FAX 608-723-6702

JOB NUMBER 05S050
 FIELDBOOK: TDSR, 2512
 G:\GRANTDOT\T3NR1W
 H:\TIE\T4NR1W\104

DRAWN BY: SW AUSTIN
 APPROVED: LL AUSTIN

GRANT COUNTY

Survey Monument Record

TYPE OF MONUMENT GRANT COUNTY Alum. Mon.

STATE PLANE COORDINATES: N _____
E _____

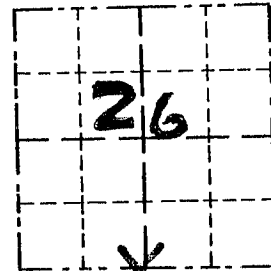
ELEVATION — M.S.L. DATUM: _____

THETA ANGLE: _____

FIELD BOOK: 95-14

PAGE 13

CORNER NO. 104
SECTION 26
TOWN 4N
RANGE 1W
S. 1/4 COR.



LOCATION
(Indicated by "X")

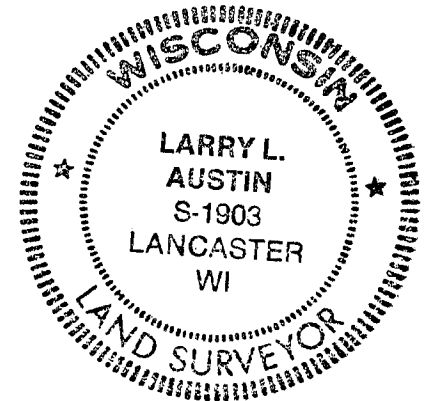
BASIS FOR MONUMENT LOCATION

(Use reverse side if necessary)

Show info such as: History of corner, with reference to Vol. and pg., dates, surveyor; exact description of monument replaced; if location computed, by taped or EDM traverse; landowner, remarks, etc.

SEAL:

CORNER WAS ORIGINALLY SET IN 1833 BY CLARK. NO RECORD FOUND SINCE ORIGINAL SURVEY. ACCEPTED E-W FENCE FOR N-S LOCATION; USED A FOUND 1" PIPE PURPORTED TO BE A SURVEY MARKER & PROJECTED TO SOUTH TO EXIST. E-W FENCE. (THE 1" PIPE IS LOCATED AT THE NW CORNER OF S 1/2, NW 1/4, SE 1/4; THIS PIPE HAS BEEN PURPORTED TO BE THE CORNER MARKER BY 2 GENERATIONS OF OWNERSHIP)



CERTIFIED CORRECT

Larry L. Austin
Registered Land Surveyor

DATE: 10/20/95

TIE SKETCH

Show at least three (3) ties and monument

