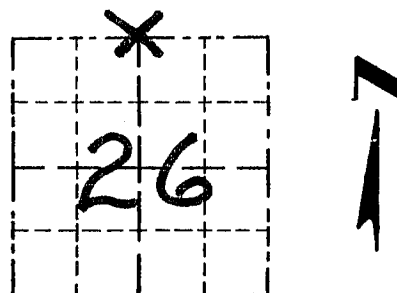


GRANT COUNTY

Survey Monument Record

TYPE OF MONUMENT 3/4" x 24" IRON BAR
 STATE PLANE COORDINATES: N _____
 E _____
 ELEVATION — M.S.L. DATUM: _____
 THETA ANGLE: _____
 FIELD BOOK: _____
 PAGE _____

CORNER NO. 84
 SECTION 26
 TOWN 4N
 RANGE 1W
N 1/4 COR.



LOCATION
 (Indicated by "X")

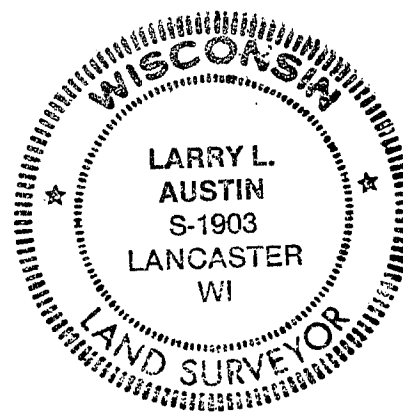
BASIS FOR MONUMENT LOCATION

(Use reverse side if necessary)

Show info such as: History of corner, with reference to Vol. and pg., dates, surveyor; exact description of monument replaced; if location computed, by taped or EDM traverse; landowner, remarks, etc.

CORNER WAS ORIGINALLY SET IN 1833 BY CLARK; NO RECORD OF THE CORNER FOUND SINCE THE ORIGINAL SURVEYS; I SET THE CORNER MIDWAY BETWEEN NE & NW CORNERS OF THE SECTION, VERIFIED BY EDM TRAVERSE OF THE AREA.

SEAL:



CERTIFIED CORRECT

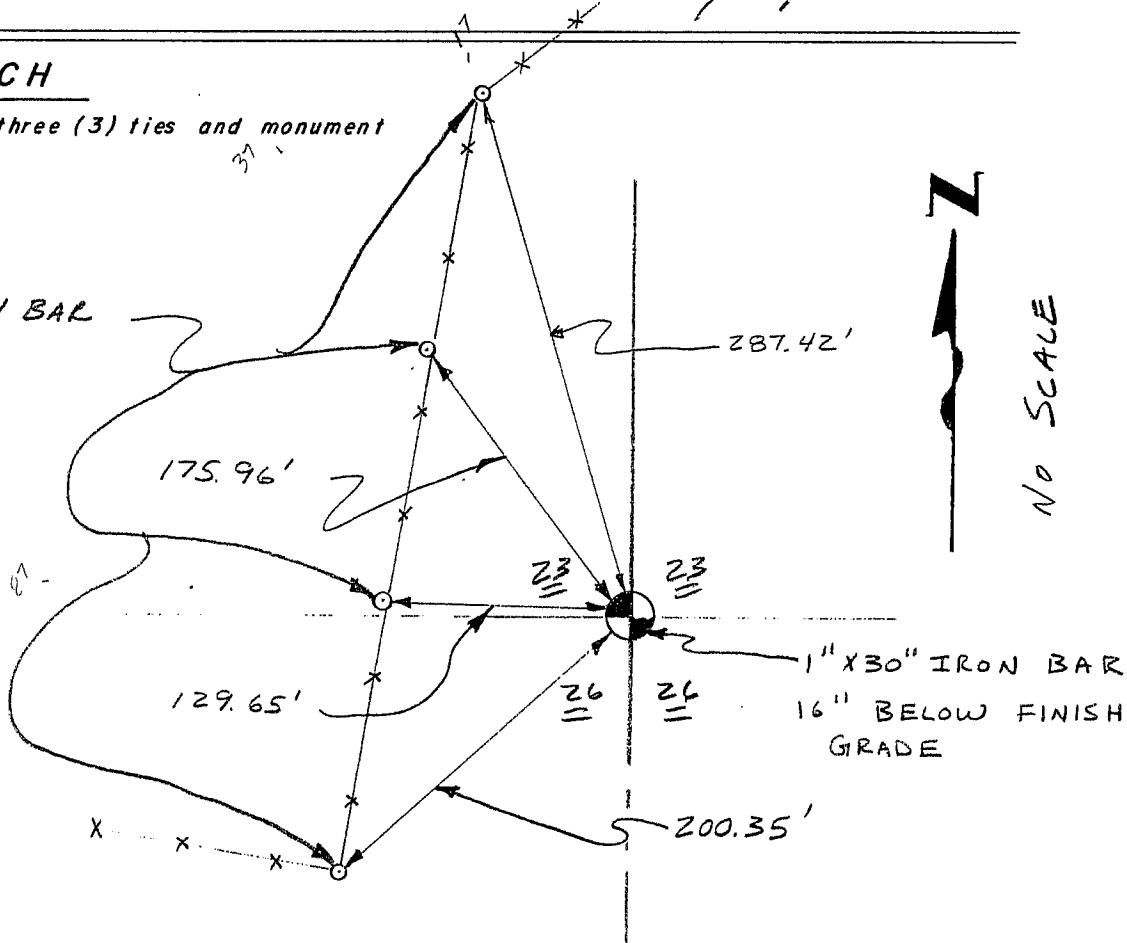
Larry L. Austin
 Registered Land Surveyor

DATE: 10/20/95

TIE SKETCH

Show at least three (3) ties and monument

3/4" x 12" IRON BAR
 AS TIES



NO SCALE