

U.S. PUBLIC LAND SURVEY MONUMENT RECORD - GRANT COUNTY, WI

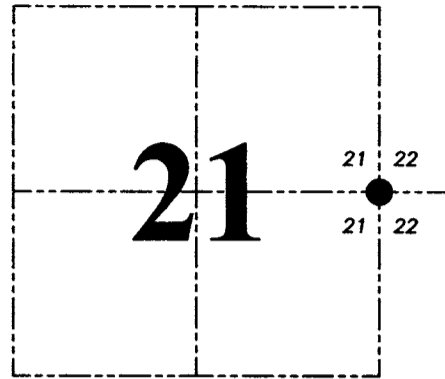
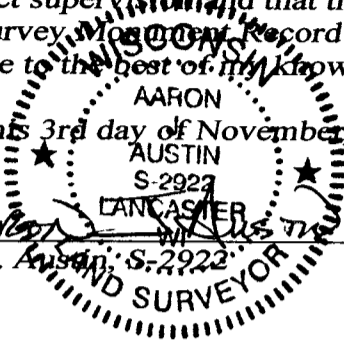
Section 21, Town 4 North Range 1 West, Town of Lima

CERTIFICATE:

I, Aaron J. Austin, Wisconsin Professional Land Surveyor, do hereby certify that the corner location on this record was determined by me and/or under my direct supervision and that this U.S. Public Land Survey Monument Record is correct and complete to the best of my knowledge and belief.

Dated this 3rd day of November, 2015.

Aaron J. Austin
 Wisconsin Professional Land Surveyor
 S-2922
 Lancaster, WI



● = CORNER LOCATION

HISTORY OF CORNER ESTABLISHMENT:

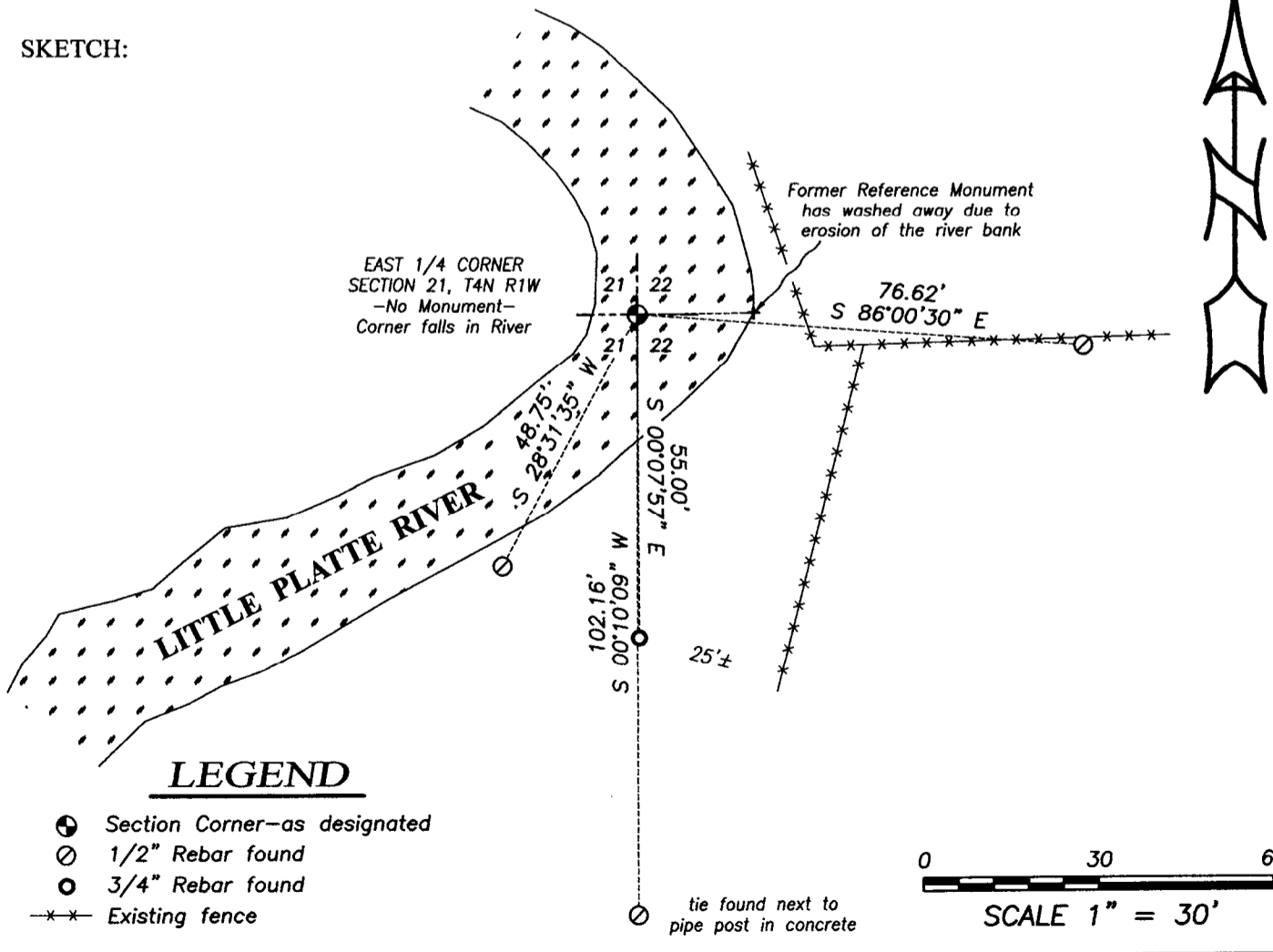
- 1833-Robert Clark set original corner.
- 1854-Overton tied to the corner on a Survey filed in Book B, Page 362 and 363.
- 2001-Larry Austin reset the corner and filed a U.S. Public Land Survey Monument Record.
- 2003-Larry Austin tied to the corner on a Survey in Book 13, Page 82.
- 2005-Larry Austin tied to the corner on a Survey filed in Book 18, Page 60.
- 2010-Aaron Austin tied to the corner on a Survey filed in Book 28, Page 6.
- 2011-Aaron Austin tied to the corner on a Survey filed in Book 29, Page 100.

DESCRIPTION OF CORNER EVIDENCE FOUND:

I found all four witness corners for the Section Corner. The reference monument previously set by Larry Austin has washed away due to the River bank eroding away. The fences have also been changed in the area of this corner, therefore I have prepared a new U.S. Public Land Survey Monument record for this corner. I have verified this location with E.D.M. and G.P.S. methods.

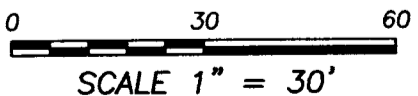
DESCRIPTION OF CORNER AND WITNESS MONUMENTS, references and accessories used to perpetuate the original or re-established location of this corner. Witnesses to corner location Shane Austin.

SKETCH:



LEGEND

- Section Corner—as designated
- 1/2" Rebar found
- 3/4" Rebar found
- *- Existing fence



4211 HWY 81 E, LANCASTER, WI 53813
 PHONE: 608-723-6363 FAX: 608-723-6702

JOB NO: 15s174
 H:CRD\15s174
 H:\TIE\T4NR1W\77

FIELDBOOK: TDSR
 DRAWN BY: AJ AUSTIN
 CREW: SW AUSTIN

U.S. PUBLIC LAND SURVEY MONUMENT RECORD - GRANT COUNTY, WI

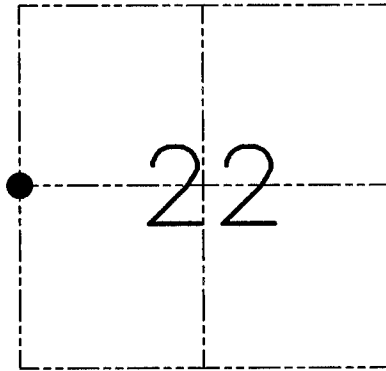
Section 22, Town 4 North Range 1 West, Town of Lima

CERTIFICATE

I, Larry L. Austin, do hereby certify that the corner location on this record was determined by me and/or under my direct supervision and that this U.S. public land survey monument record is correct and complete to the best of my knowledge and belief.

Dated this 1st day of August, 2001

Larry L. Austin
Larry L. Austin S-1903



● = CORNER LOCATION

HISTORY OF CORNER ESTABLISHMENT

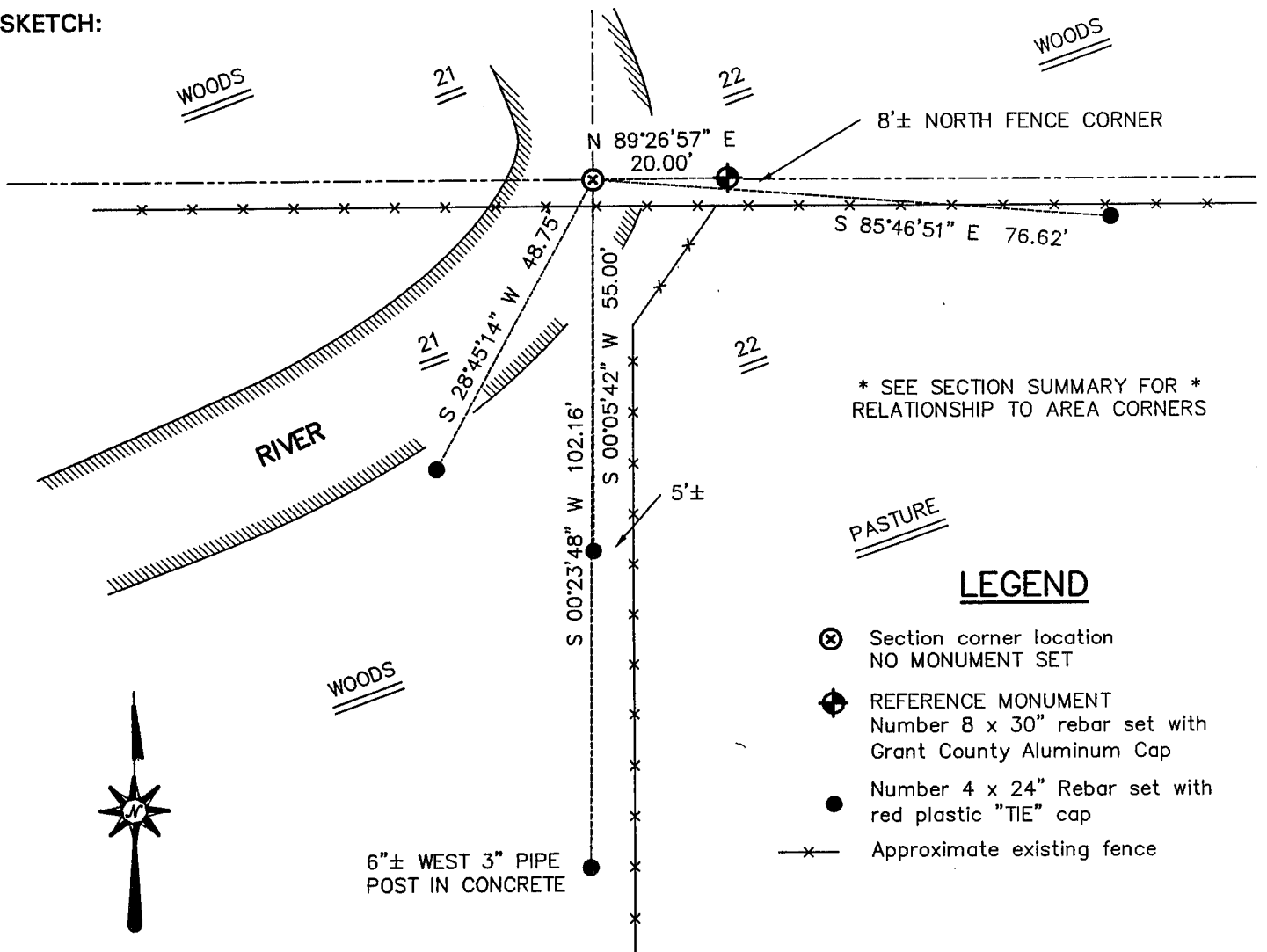
Corner was originally set in 1833 by Robert Clark.
No other record of the corners were found.

DESCRIPTION OF CORNER EVIDENCE FOUND

I found no evidence to the location of the corner. I established the corner based on a single proportion along the West line of Section 22. I was unable to place the monument due to the river (reference monument set). Verified this location using EDM & GPS methods.

DESCRIPTION OF CORNER AND WITNESS MONUMENTS, references and accessories used to perpetuate the original or re-established location of this corner. Witnesses to the corner location Bobby Sedgwick & Shelby Blindert & Dustin Maas

SKETCH:



* SEE SECTION SUMMARY FOR *
RELATIONSHIP TO AREA CORNERS

LEGEND

- ⊗ Section corner location
NO MONUMENT SET
- ⊕ REFERENCE MONUMENT
Number 8 x 30" rebar set with
Grant County Aluminum Cap
- Number 4 x 24" Rebar set with
red plastic "TIE" cap
- x- Approximate existing fence

SKETCH NOT TO SCALE

AUSTIN ENGINEERING, LLC

4211 HWY 81 EAST, LANCASTER, WI 53813
PHONE 608-723-6363 FAX 608-723-6702

FIELDBOOK: SDR33
G: \T4NR1W\16
C: \SWA\TIE\T4NR1W\77
CREW: BS-SB-SA-TF

DRAWN BY: SW AUSTIN
APPROVED: LL AUSTIN

CORNER NUMBER 77