

# U.S. PUBLIC LAND SURVEY MONUMENT RECORD - GRANT COUNTY, WI

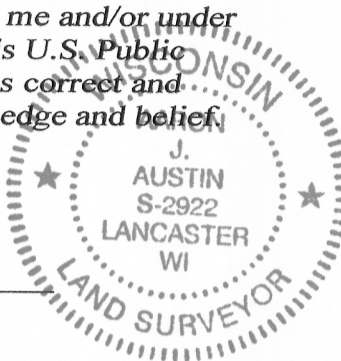
Section 21, Town 4 North Range 1 West, Town of Lima

**CERTIFICATE:**

I, Aaron J. Austin, Wisconsin Professional Land Surveyor, do hereby certify that the corner location on this record was determined by me and/or under my direct supervision and that this U.S. Public Land Survey Monument Record is correct and complete to the best of my knowledge and belief.

Dated this 5th day of April, 2016.

*Aaron J. Austin*  
 Aaron J. Austin, S-2922



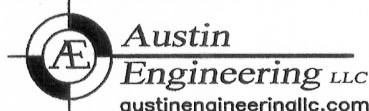
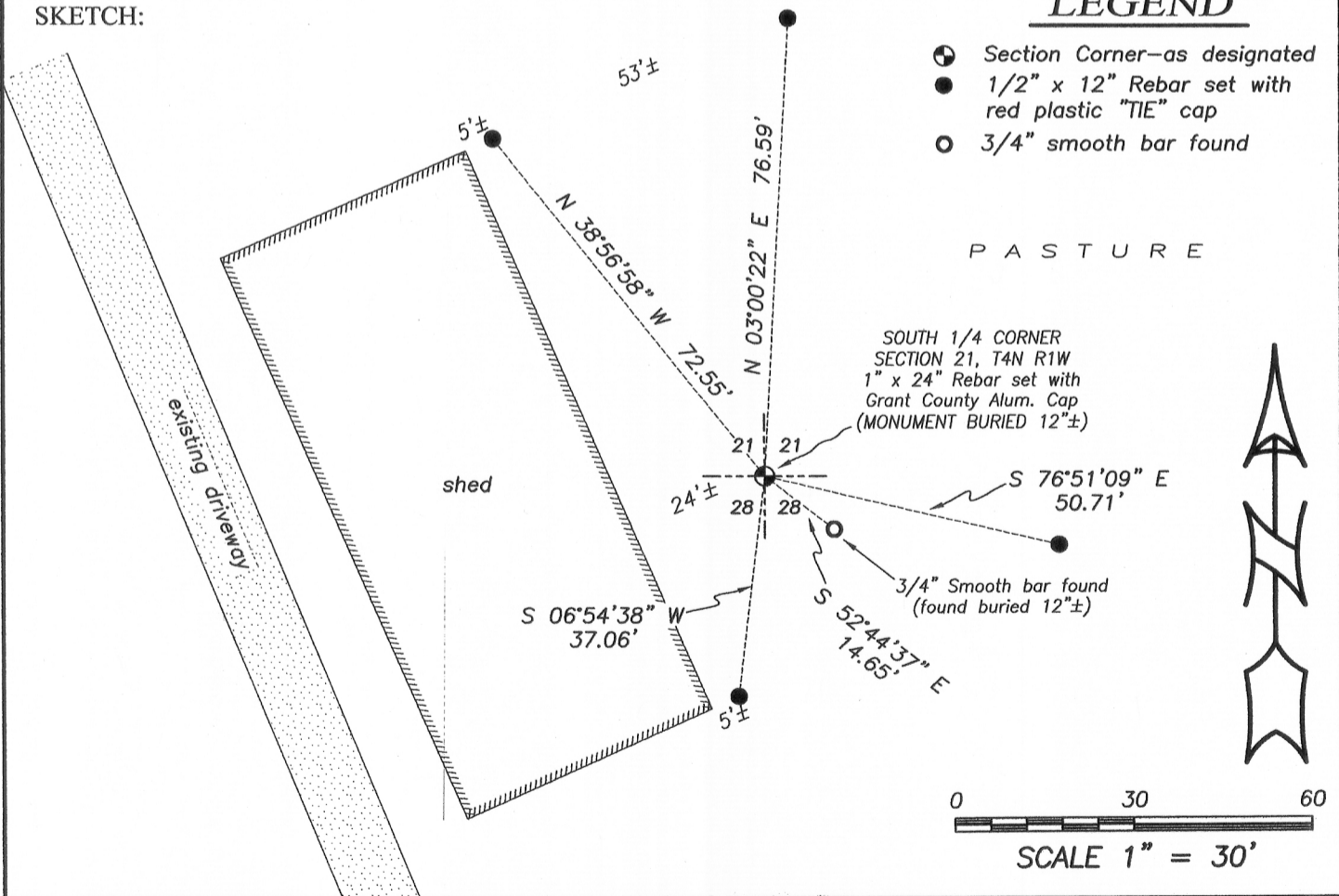
GRANT COUNTY COORDINATES  
 NAD 83 (2011 ADJUSTMENT):  
 NORTHING: 505,693.10 EASTING: 876,600.02

HISTORY OF CORNER ESTABLISHMENT:

- 1833-Robert Clark set original corner.
- 1841-Freeman tied to the corner on a Survey in Book A, Page 53.
- 1846-Wiltse tied to the corner on a Survey filed in Book B, Page 37.
- 1847-Stuntz tied to the corner on a Survey in Book B, Page 48.
- 1854-Overton tied to the corner on a Survey filed in Book B, Page 362.
- 1992-Larry Austin tied to the corner on a Survey filed in Book R, Page 105 and 106.
- 1994-Larry Austin tied to the corner on a Survey filed in Book U, Page 94.
- 1994-Larry Austin reset the corner and prepared a Grant County Survey Monument Record.
- 1995-Laurence Schmit showed the computed location of the corner on a Survey filed in Book W, Page 63.
- 2004-Larry Austin tied to the corner on Certified Survey Map No. 1131.
- 2006-Larry Austin showed this corner on a Survey filed in Book 19, Page 87.
- 2008-Larry Austin tied to the corner on a Survey filed in Book 24, Page 25.
- 2008-Travis Kramer tied to the corner on Certified Survey Map No. 1443.
- 2010-Travis Kramer tied to the corner on Certified Survey Map No. 1529.
- 2015-Aaron Austin tied to the corner on a Survey filed in Book 37, Page 81 and prepared a U.S. Public Land Survey Monument Record for the corner.

DESCRIPTION OF CORNER AND WITNESS MONUMENTS, references and accessories used to perpetuate the original or re-established location of this corner. Witnesses to corner location Shane Austin.

SKETCH:



4211 HWY 81 E, LANCASTER, WI 53813  
 PHONE: 608-723-6363 FAX: 608-723-6702

JOB NO: 15s174  
 H:\CRD\15s174  
 H:\TIE\T4NR1W\88(A)

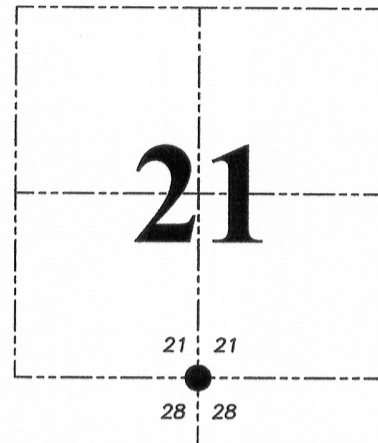
FIELDBOOK: TDSR  
 DRAWN BY: AJ AUSTIN  
 CREW: SW AUSTIN

SHEET 1 OF 2

APR 15 2016

**U.S. PUBLIC LAND SURVEY MONUMENT RECORD - GRANT COUNTY, WI**

Section 21, Town 4 North Range 1 West, Town of Lima



● = CORNER LOCATION

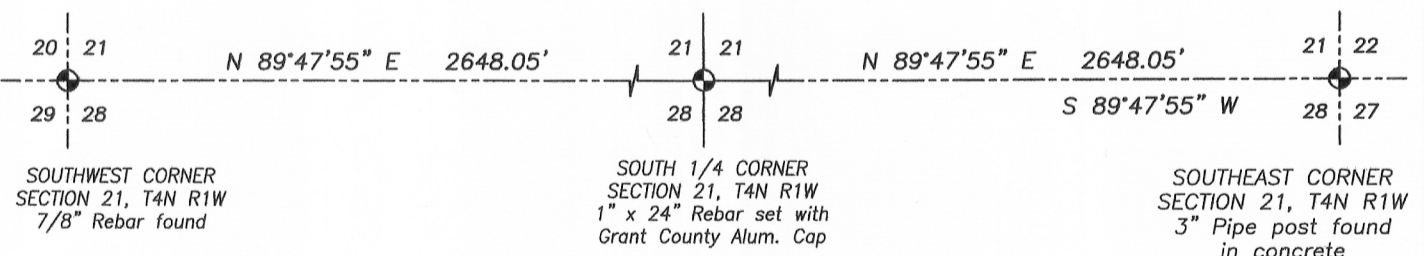
DESCRIPTION OF CORNER EVIDENCE FOUND:

During the course of the Survey I prepared in November of 2015, I found a 3/4" smooth bar buried approximately 12" below the surface in good condition and not disturbed.

At that time I accepted the location of the rebar I found and set 4 new witness corners within the vicinity of the corner. A new U.S. Public Land Survey Monument Record was prepared by me.

In April of 2016 while working on a survey in the Southeast 1/4 of Section 21, I measured to the Southeast corner of Section 21. Once I measured to that corner, I discovered that the rebar I found at the South 1/4 corner was not located midway and on line as noted on the tie sheet filed by Larry Austin.

I then looked for another rebar at the location of midway and on line between the Southwest corner and the Southeast corner of Section 21. No rebar was recovered. I set a 1" x 24" rebar with a Grant County Aluminum Cap at this location. For those surveys located in Section 21 prepared by Larry Austin, Laurence Schmit, and Stan King, it appears that the correct location for the corner was utilized and not the rebar.



**Austin Engineering LLC**  
austinengineeringllc.com

4211 HWY 81 E, LANCASTER, WI 53813  
PHONE: 608-723-6363 FAX: 608-723-6702

JOB NO: 15s174  
H:\CRD\15s174  
H:\TIE\T4NR1W\88(A)

FIELDBOOK: TDSR  
DRAWN BY: AJ AUSTIN  
CREW: SW AUSTIN

SHEET 2 OF 2

# U.S. PUBLIC LAND SURVEY MONUMENT RECORD - GRANT COUNTY, WI

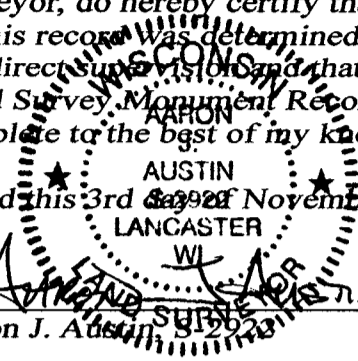
Section 21, Town 4 North Range 1 West, Town of Lima

**CERTIFICATE:**

I, Aaron J. Austin, Wisconsin Professional Land Surveyor, do hereby certify that the corner location on this record was determined by me and/or under my direct supervision and that this U.S. Public Land Survey Monument Record is correct and complete to the best of my knowledge and belief.

Dated this 3rd day of November, 2015.

*Aaron J. Austin*  
 Aaron J. Austin  
 Wisconsin Professional Land Surveyor



**HISTORY OF CORNER ESTABLISHMENT:**

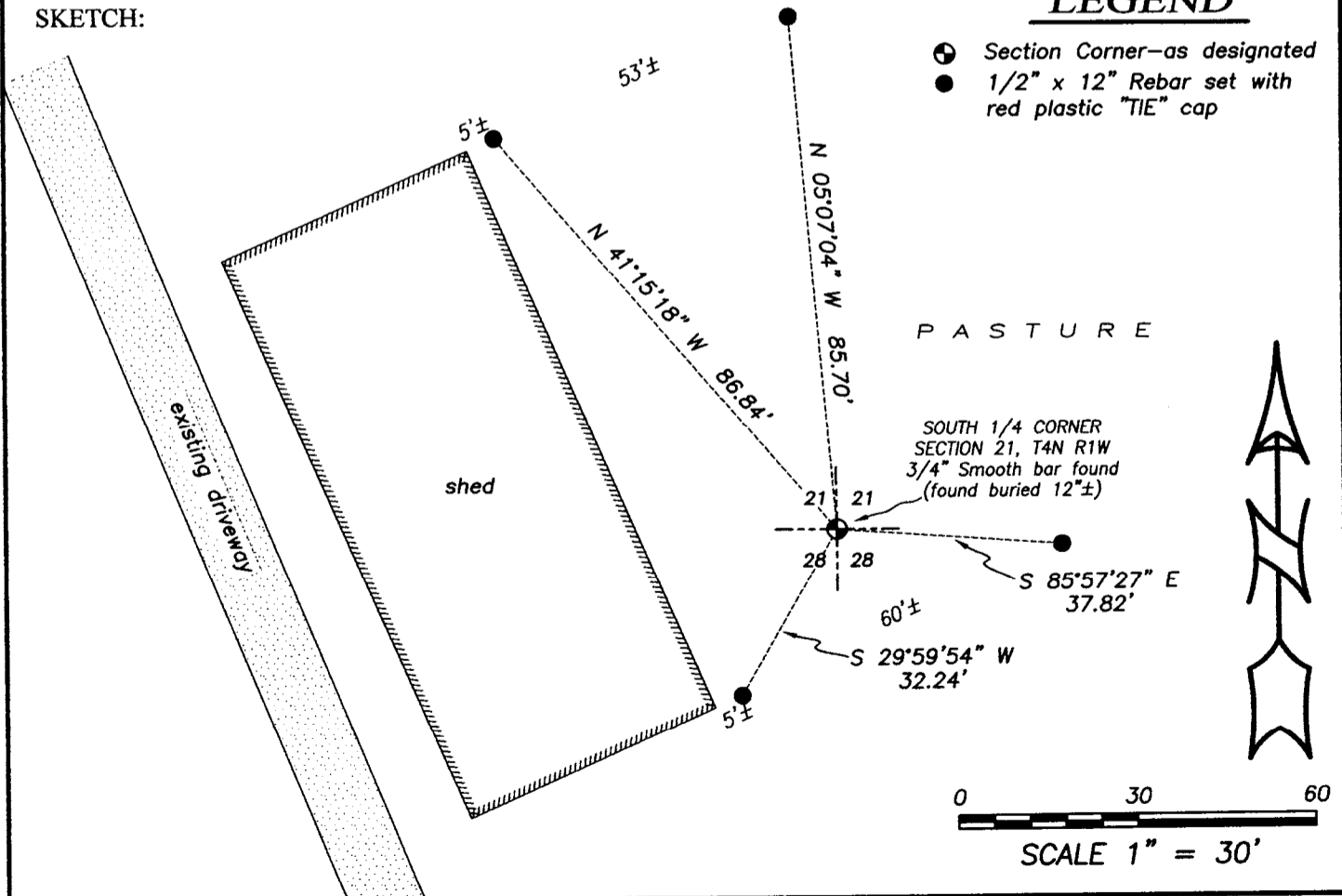
- 1833-Robert Clark set original corner.
  - 1841-Freeman tied to the corner on a Survey in Book A, Page 53.
  - 1846-Wiltse tied to the corner on a Survey filed in Book B, Page 37.
  - 1847-Stuntz tied to the corner on a Survey in Book B, Page 48.
  - 1854-Overton tied to the corner on a Survey filed in Book B, Page 362.
  - 1992-Larry Austin tied to the corner on a Survey filed in Book R, Page 105 and 106.
  - 1994-Larry Austin tied to the corner on a Survey filed in Book U, Page 94.
  - 1994-Larry Austin reset the corner and prepared a Grant County Survey Monument Record.
- Several more recent surveys have accepted the corner location as established by Larry Austin.

**DESCRIPTION OF CORNER EVIDENCE FOUND:**

I found the corner buried approximately 12" below the surface. I set 4 new witness corners within the vicinity of the corner due to the fact that this area is now a pasture and improvements have been done in the immediate area since the original Grant County Survey Monument Record prepared by Larry Austin in 1994. I have verified this location with E.D.M. and G.P.S. methods.

**DESCRIPTION OF CORNER AND WITNESS MONUMENTS, references and accessories used to perpetuate the original or re-established location of this corner. Witnesses to corner location Shane Austin.**

**SKETCH:**



4211 HWY 81 E, LANCASTER, WI 53813  
 PHONE: 608-723-6363 FAX: 608-723-6702

JOB NO: 15s174  
 H:CRD\15s174  
 H:\TIE\T4NR1W\88

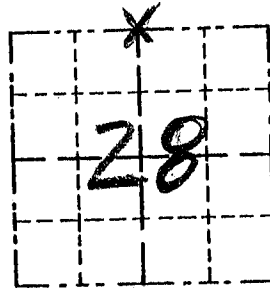
FIELDBOOK: TDSR  
 DRAWN BY: AJ AUSTIN  
 CREW: SW AUSTIN

# GRANT COUNTY

## Survey Monument Record

TYPE OF MONUMENT 3/4" SMOOTH BAR  
 STATE PLANE COORDINATES: N \_\_\_\_\_  
 E \_\_\_\_\_  
 ELEVATION — M.S.L. DATUM: \_\_\_\_\_  
 THETA ANGLE: \_\_\_\_\_  
 FIELD BOOK: \_\_\_\_\_  
 PAGE \_\_\_\_\_

CORNER NO. 88  
 SECTION 28  
 TOWN 4 N  
 RANGE 1 W  
N 1/4 COR



LOCATION  
 (Indicated by "X")

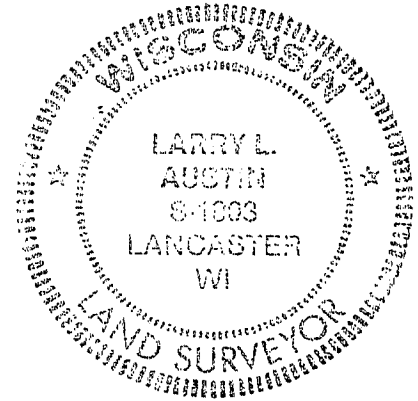
### BASIS FOR MONUMENT LOCATION

(Use reverse side if necessary)

Show info such as: History of corner, with reference to Vol. and pg., dates, surveyor; exact description of monument replaced; if location computed, by taped or EDM traverse; landowner, remarks, etc.

SEAL:

No RECORD FOUND OF CORNER  
 SINCE ORIGINAL SURVEYS;  
 CORNER WAS SET ON LINE &  
 MIDWAY BETWEEN THE NE &  
 NW CORNERS OF SEC. 28  
 VERIFIED BY EDM TRAVERSE



CERTIFIED CORRECT

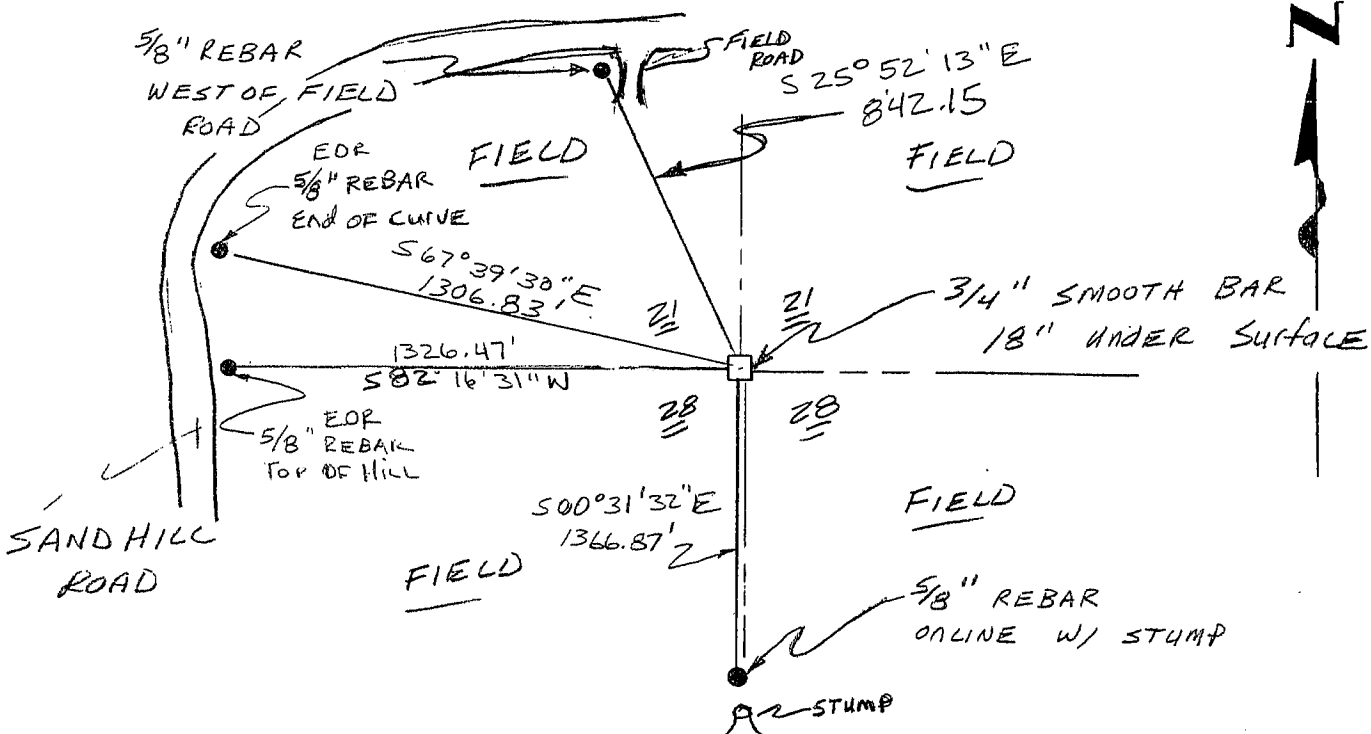
*Larry L. Austin*  
 Registered Land Surveyor

DATE: 11/2/94

REVISED 12/08/95

### TIE SKETCH

Show at least three (3) ties and monument



NO SCALE