

U.S. PUBLIC LAND SURVEY MONUMENT RECORD - GRANT COUNTY, WI

Section 29, Town 4 North Range 1 West, Town of Lima (a)

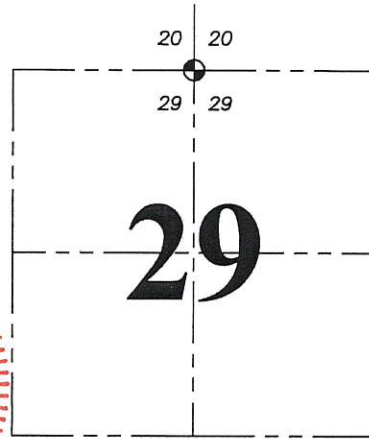
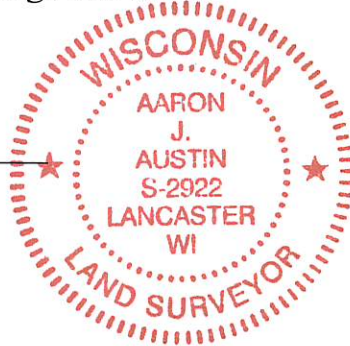
NOTE: This form is intended and designed to fulfill all requirements of the Wisconsin Administrative Code Chapter A-E 7.08, U.S. Public Land Survey Monument Record (3) (a) (b) (c) (d) (e) (f) (g) (h) (i).

CERTIFICATE: (i)

I, Aaron J. Austin, Wisconsin Professional Land Surveyor, do hereby certify that the corner location on this record was determined by me and/or under my direct supervision and that this U.S. Public Land Survey Monument Record is correct and complete to the best of my knowledge and belief.

Dated this 4th day of May, 2017.

Aaron J. Austin
Aaron J. Austin, S-2922



⊕ = CORNER LOCATION

Grant County Coordinates:
NAD 83 (2011)
Northing: 505,675.72
Easting: 871,281.06

HISTORY OF CORNER ESTABLISHMENT:

Robert Clark set the original corner in 1833.
Larry Austin reset the corner and prepared a Survey Monument Record dated 11-30-1988.

DESCRIPTION OF CORNER EVIDENCE FOUND: (b) (f) (g) (h)

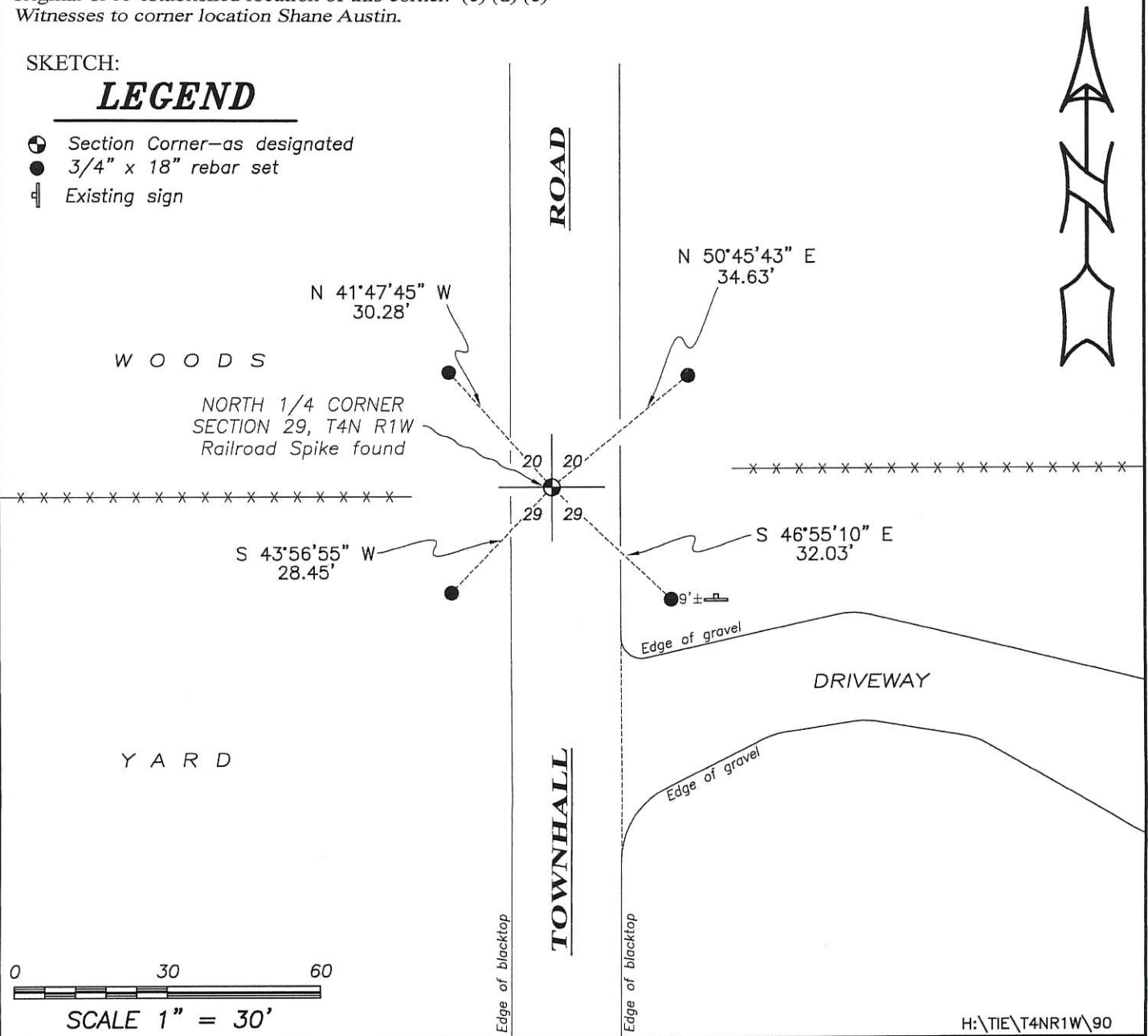
The Railroad Spike was found as set by Larry Austin. I found two witness corners. One in good condition and one disturbed. I set four new witness corners after I verified it's location with G.P.S. and E.D.M. methods

DESCRIPTION OF CORNER AND WITNESS MONUMENT, references and accessories used to perpetuate the original or re-established location of this corner. (c) (d) (e)
Witnesses to corner location Shane Austin.

SKETCH:

LEGEND

- ⊕ Section Corner—as designated
- 3/4" x 18" rebar set
- ⊥ Existing sign

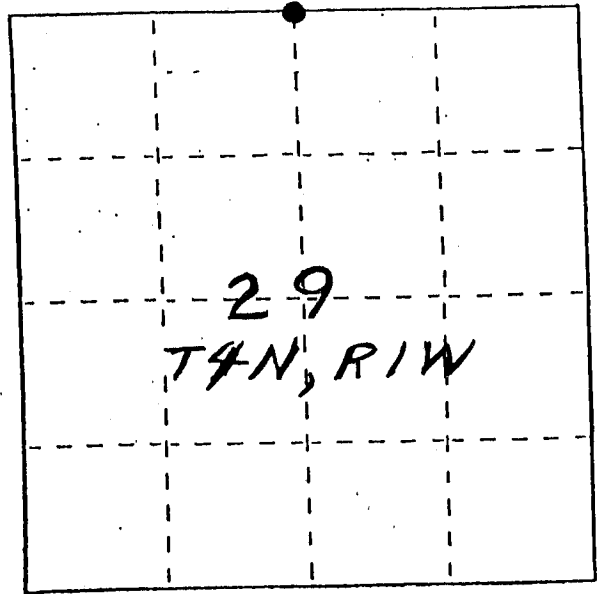


U. S. PUBLIC LAND SURVEY MONUMENT RECORD

INSTRUCTIONS: This record shall show the location of the corner and shall include all of the following nine elements (a through i).

- (a) Identify the corner by reference to the U.S. public land survey system.
 ● = Corner monument restored.

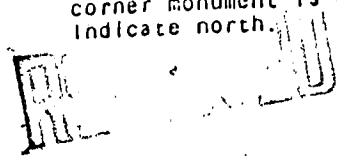
*NY4 CORNER, SEC. 29,
 T4N, R1W, LIMA TWP.*



- (b) Describe any record evidence, monument evidence, occupational evidence, testimonial evidence or any other material evidence you considered, and whether the monument was found or placed.
MONUMENT WAS PLACED. AT LOCATION BASED DESCRIPTIONS OF PROPERTY ADJACENT TO THE CORNER & BY OCCUPATIONAL EVIDENCE, VERIFIED BY EDM TRAVERSE OF THE AREA.

- (c) In the plan view drawing below, provide reference ties to at least 4 witness monuments, or, if the location is within a municipality, to at least 2 witness monuments. (Witness monuments shall be made of concrete, natural stone, iron or other equally durable material.)
 Describe witness monuments.

- (d) Show a plan view drawing depicting the relevant monuments and reference ties which is sufficient in detail to enable accurate relocation of the corner monument if the corner monument is disturbed. Indicate north.

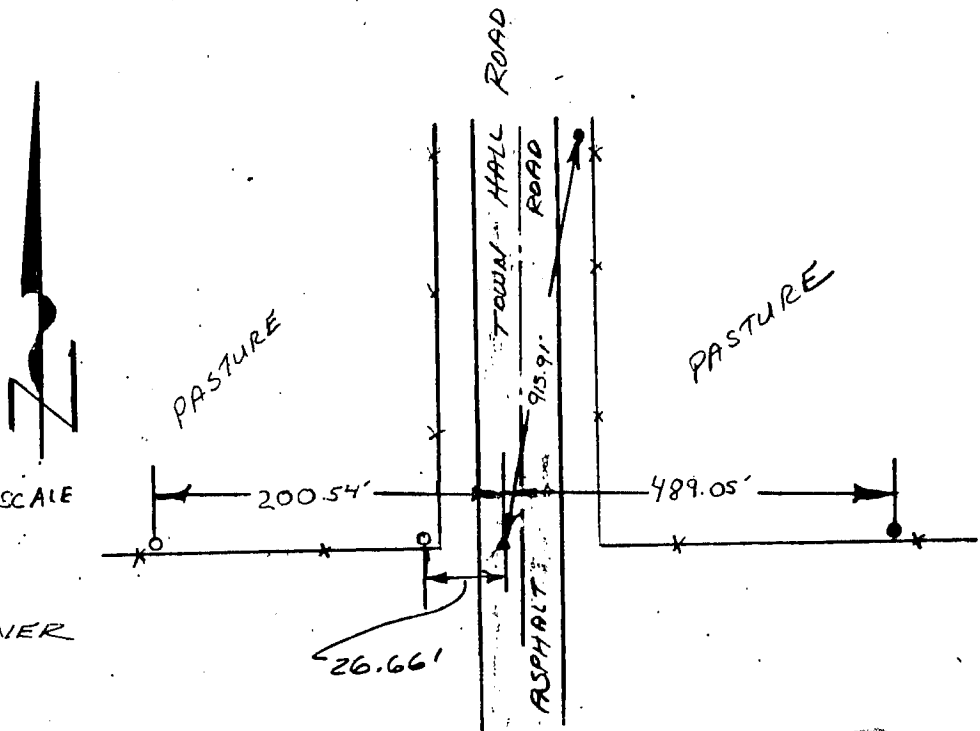


FEB. 27, 1989

LEGEND

- - 1/2" REBAR
- - 3/4" REBAR
- - 1" PIPE
- ▲ - RR SPIKE = NY4 CORNER
- X — - EXIST. FENCE

NQ SCALE



P. 90

