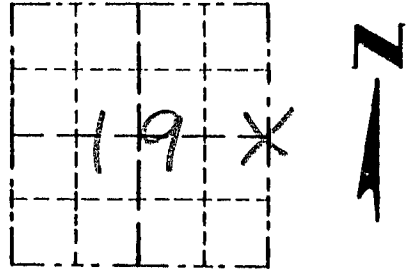


Survey Monument Record

TYPE OF MONUMENT 3/4" X 24" IRON BAR SET

CORNER NO. 75
 SECTION 19
 TOWN 4N
 RANGE 1W

FIELD BOOK: 96-22(A)
 PAGE 23



LOCATION
 (Indicated by "X")

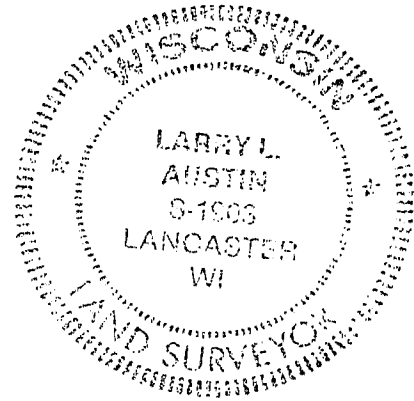
BASIS FOR MONUMENT LOCATION

(Use reverse side if necessary)

Show info such as: History of corner, with reference to Vol. and pg., dates, surveyor; exact description of monument replaced; if location computed, by taped or EDM traverse; landowner, remarks, etc.

SEAL:

CORNER SET IN 1833 BY ROBERT CLARK. IN 1971 OSCAR DITTRICH (P.E.) SET THE CORNER AND SET TIES IN THE TOP OF CONCRETE MONUMENTS. I RESET THE CORNER BASED ON DITTRICH'S TIE SHEET. VERIFIED BY EDM TRAVERSE OF THE AREA.



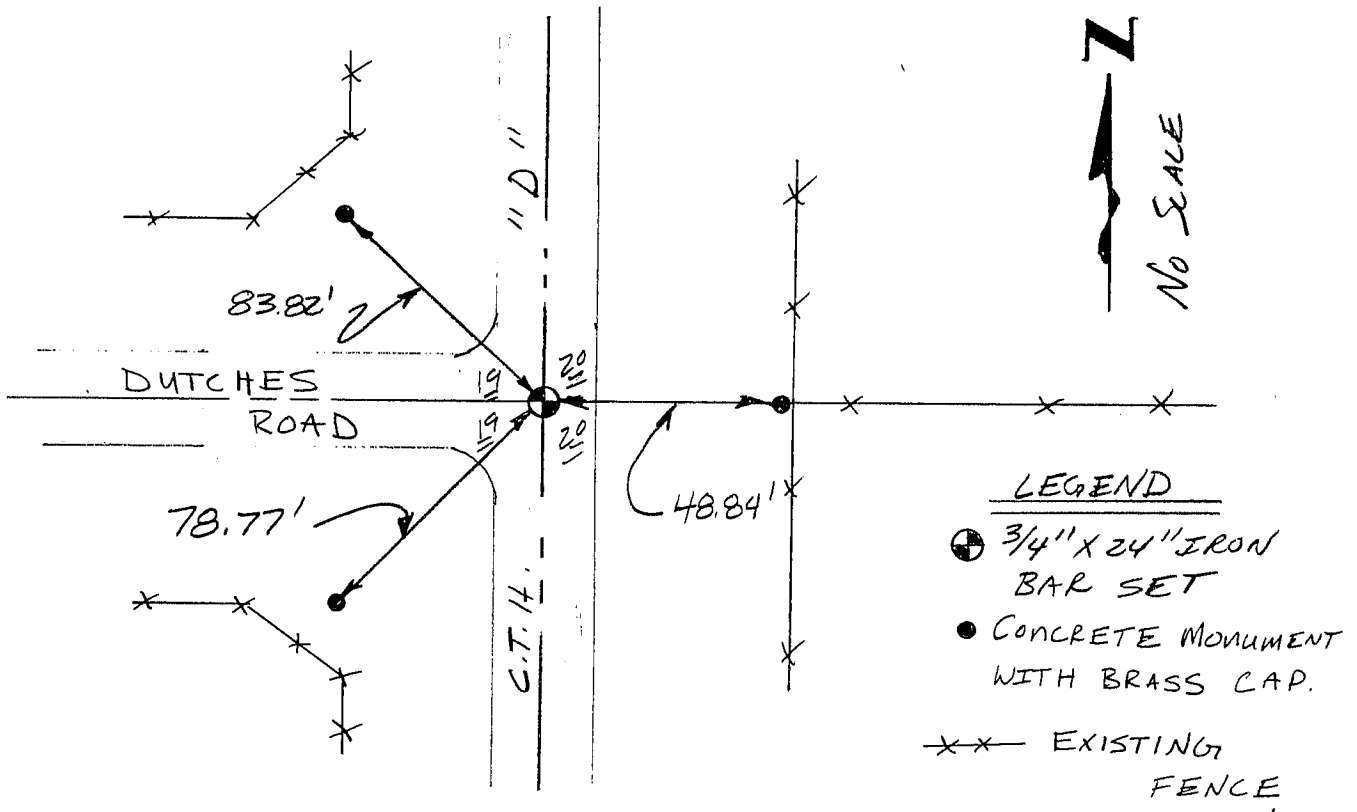
CERTIFIED CORRECT

Larry L. Austin
 Registered Land Surveyor

DATE: 2-18-98

TIE SKETCH

Show at least three (3) ties and monument



LEGEND

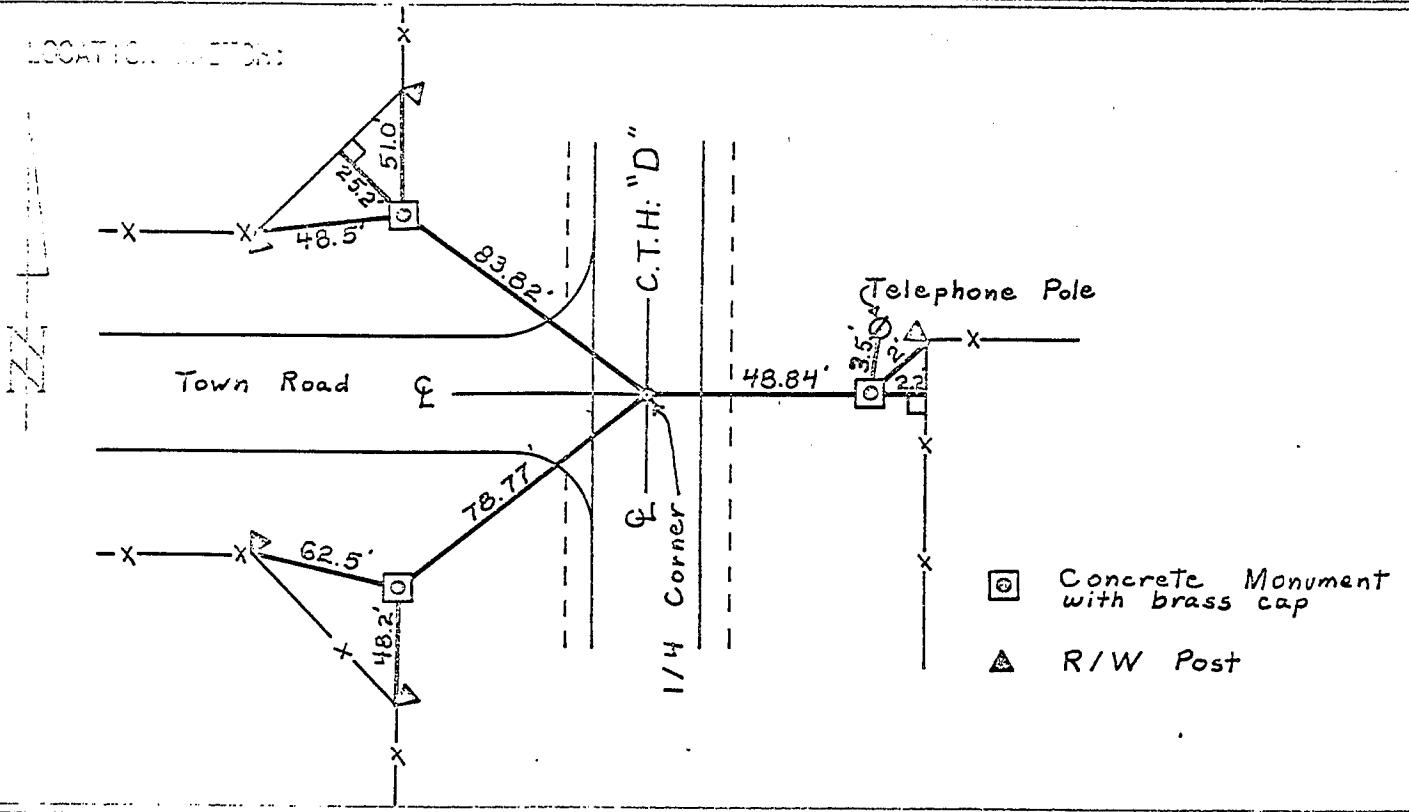
- ⊗ 3/4" X 24" IRON BAR SET
- CONCRETE MONUMENT WITH BRASS CAP.
- x— EXISTING FENCE

RESULTS OF U.S. PUBLIC LAND SURVEY CONTROL STATION

QUARTER SECTION CORNER 19 20 T. 4 N., R. 1 W., GRANT COUNTY, WISCONSIN
 GEOGRAPHIC SURVEY NO: 19 20
 STATE PLANE COORDINATES: _____

ELEVATION OF STATION: _____ FEET ANGLE: _____
 HORIZONTAL CONTROL: WISCONSIN STATE PLANE COORDINATE SYSTEM, SOUTH ZONE
 VERTICAL CONTROL: MEAN SEA LEVEL, 1929 ADJUSTMENT
 HORIZONTAL & VERTICAL CONTROL ACCURACY: SECOND ORDER

LOCATION SKETCH:



- ⊗ Concrete Monument with brass cap
- ▲ R/W Post

SURVEY CONTROL POINT:
 COUNTY: GRANT

THE POINT SET FOR COUNTY HIGHWAY PROJECT S 0574(7) AND SHOWN ON PROJECT PLAT WAS REFERENCED PRIOR TO CONSTRUCTION. EXCAVATION WAS DONE BELOW THE ROADWAY SURFACE IN SEARCH OF SOME EXISTING EVIDENCE. NOTHING WAS FOUND.

DATE: JUNE, 1971
 Oscar J. Dittrich PE
 SURVEYOR 480R
 DISTRICT 1