

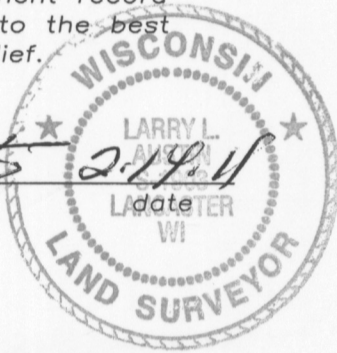
# U.S. PUBLIC LAND SURVEY MONUMENT RECORD

Section 17, Town 4 North Range 1 West, Town of Lima, Grant County, Wisconsin

## CERTIFICATE

I, Larry L. Austin, do hereby certify that the corner location on this record was determined by me and/or under my direct supervision and that this U.S. public land survey monument record is correct and complete to the best of my knowledge and belief.

*Larry L. Austin*  
Larry L. Austin, S-1903



● = CORNER LOCATION

## HISTORY OF CORNER

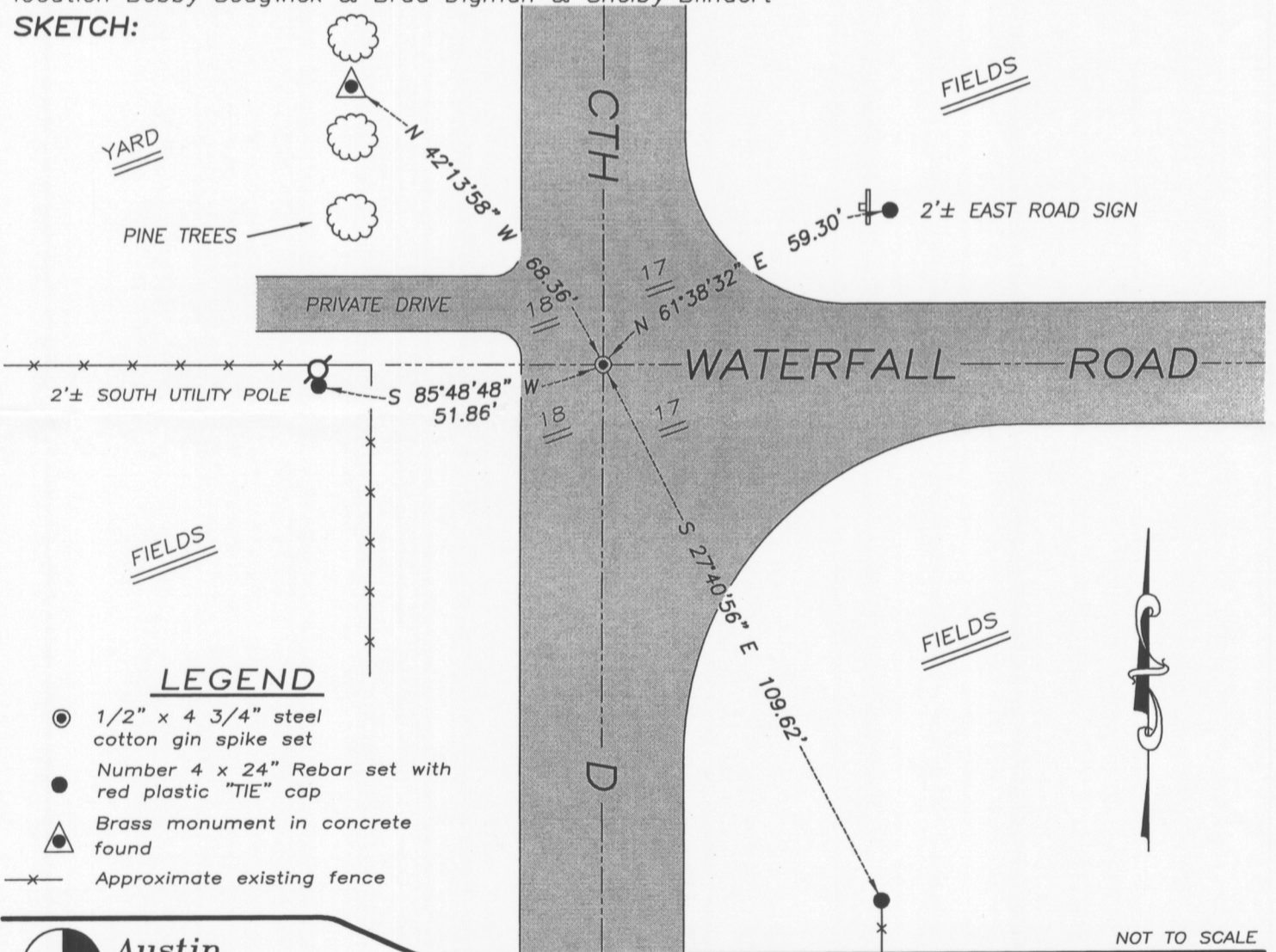
Corner was originally set in 1832 by Robert Clark. In 1971 Oscar Dettrich PE recorded a tiesheet. In 1978 Larry Schmit tied to the corner. No other record of the corner was found.

## CORNER EVIDENCE FOUND

I reset the corner at Schmit's location because he is a Registered Land Surveyor and Oscar Dettrich was not and it was unknown to what he was tying to. Verified this location using EDM & GPS methods.

DESCRIPTION OF CORNER AND WITNESS MONUMENTS, references and accessories used to perpetuate the original or re-established location of this corner. Witnesses to monument location Bobby Sedgwick & Brad Digman & Shelby Blindert

## SKETCH:



### LEGEND

- 1/2" x 4 3/4" steel cotton gin spike set
- Number 4 x 24" Rebar set with red plastic "TIE" cap
- ▲ Brass monument in concrete found
- x- Approximate existing fence

NOT TO SCALE



**Austin Engineering LLC**

4211 HWY 81 E, LANCASTER, WI 53813  
PHONE 608-723-6363 FAX 608-723-6702

JOB NUMBER 09S026  
FIELDBOOK: TDSR, 2810A  
G:\T4NR1W\16  
H:\TIE\T4NR1W\55

DRAWN BY: SW AUSTIN  
APPROVED: LL AUSTIN

55

FEB 18 2011

RECORD OF U.S. PUBLIC LAND SURVEY CONTROL STATION

QUARTER SECTION CORNER  $18'17"$  TOWNSHIP 4 N, RANGE 1 W, GRANT COUNTY, WISCONSIN  
 $18'17"$

GEOMETRIC SURVEY BY: \_\_\_\_\_

STATE PLANE COORDINATES OF: \_\_\_\_\_  
 NORTH \_\_\_\_\_  
 EAST \_\_\_\_\_

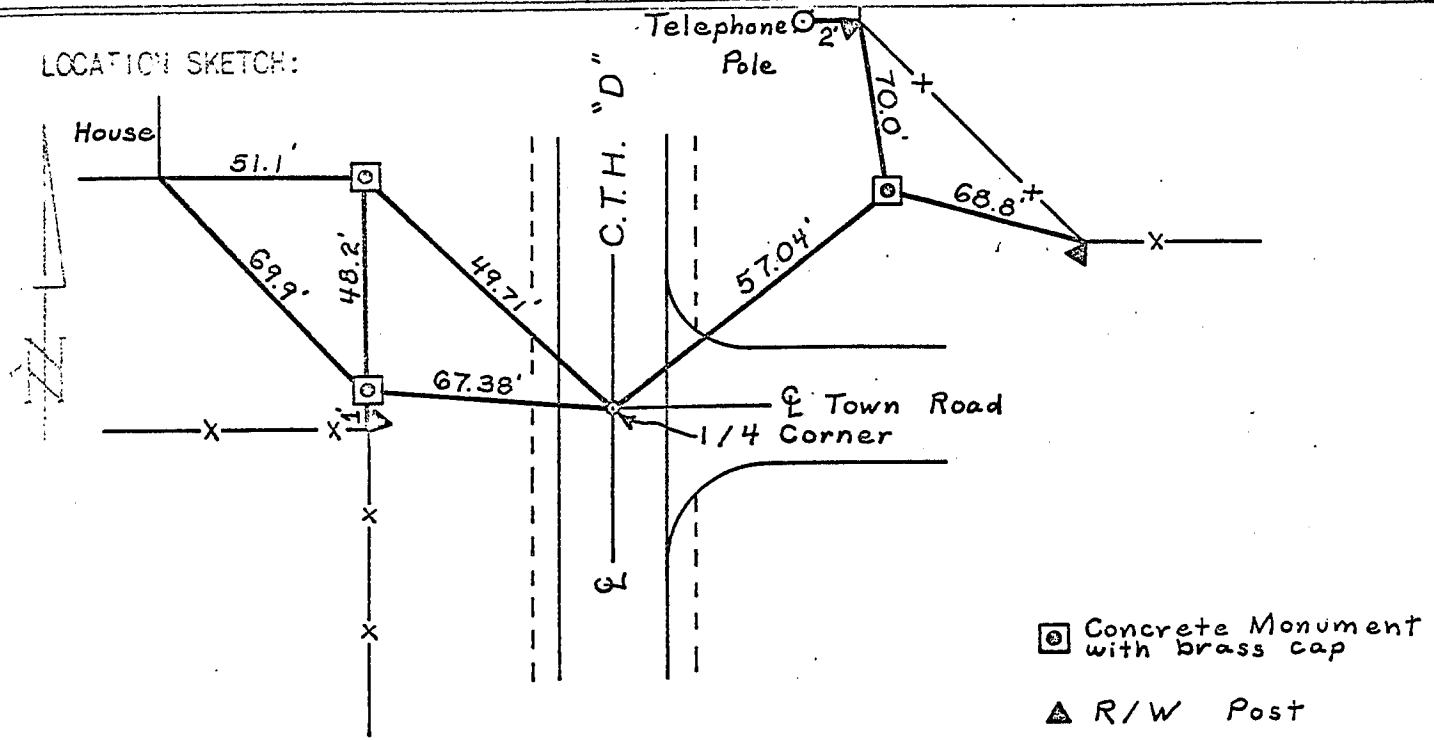
ELEVATION OF STATION: \_\_\_\_\_ THETA ANGLE: \_\_\_\_\_

HORIZONTAL DATUM: WISCONSIN STATE PLANE COORDINATE SYSTEM, SOUTH ZONE

VERTICAL DATUM: MEAN SEA LEVEL, 1929 ADJUSTMENT

HORIZONTAL & VERTICAL CONTROL ACCURACY: SECOND ORDER

LOCATION SKETCH:



SURVEYOR'S AFFIDAVIT:

STATE OF WISCONSIN) SS  
 GRANT COUNTY)

I, \_\_\_\_\_, CERTIFY THAT THE POINT SET FOR COUNTY HIGHWAY PROJECT S 0574(7) AND SHOWN ON PROJECT PLAT WAS REFERENCED PRIOR TO CONSTRUCTION. EXCAVATION WAS DONE BELOW THE ROADWAY SURFACE IN SEARCH OF SOME EXISTING EVIDENCE. NOTHING WAS FOUND.

DATE OF SURVEY: JUNE, 1971  
 \_\_\_\_\_ P.E.  
 SURVEY SUPERVISOR  
 DISTRICT 1