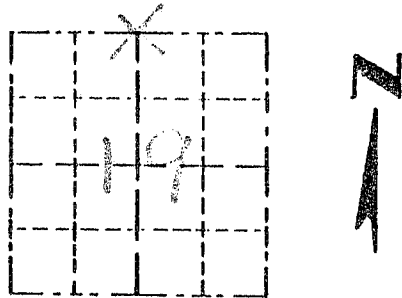


Survey Monument Record

TYPE OF MONUMENT 1" IRON PIPE  
FOUND

CORNER NO. 72  
SECTION 19  
TOWN 14N  
RANGE 14W

FIELD BOOK: 96-22(A)  
PAGE (25)



LOCATION  
(Indicated by "X")

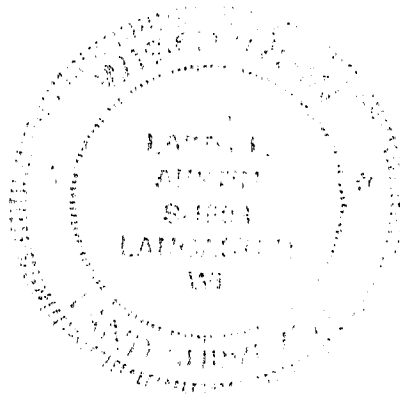
BASIS FOR MONUMENT LOCATION

(Use reverse side if necessary)

Show info such as: History of corner, with reference to Vol. and pg, dates, surveyor; exact description of monument replaced; if location computed, by taped or EDM traverse; landowner, remarks, etc.

CORNER SET IN 1833 BY ROBERT CLARK. IN 1978 LAURENCE SCHMIT SET A 1" IRON PIPE AT THE CORNER. T. VERIFIED ITS LOCATION USING EDM METHODS

SEAL:



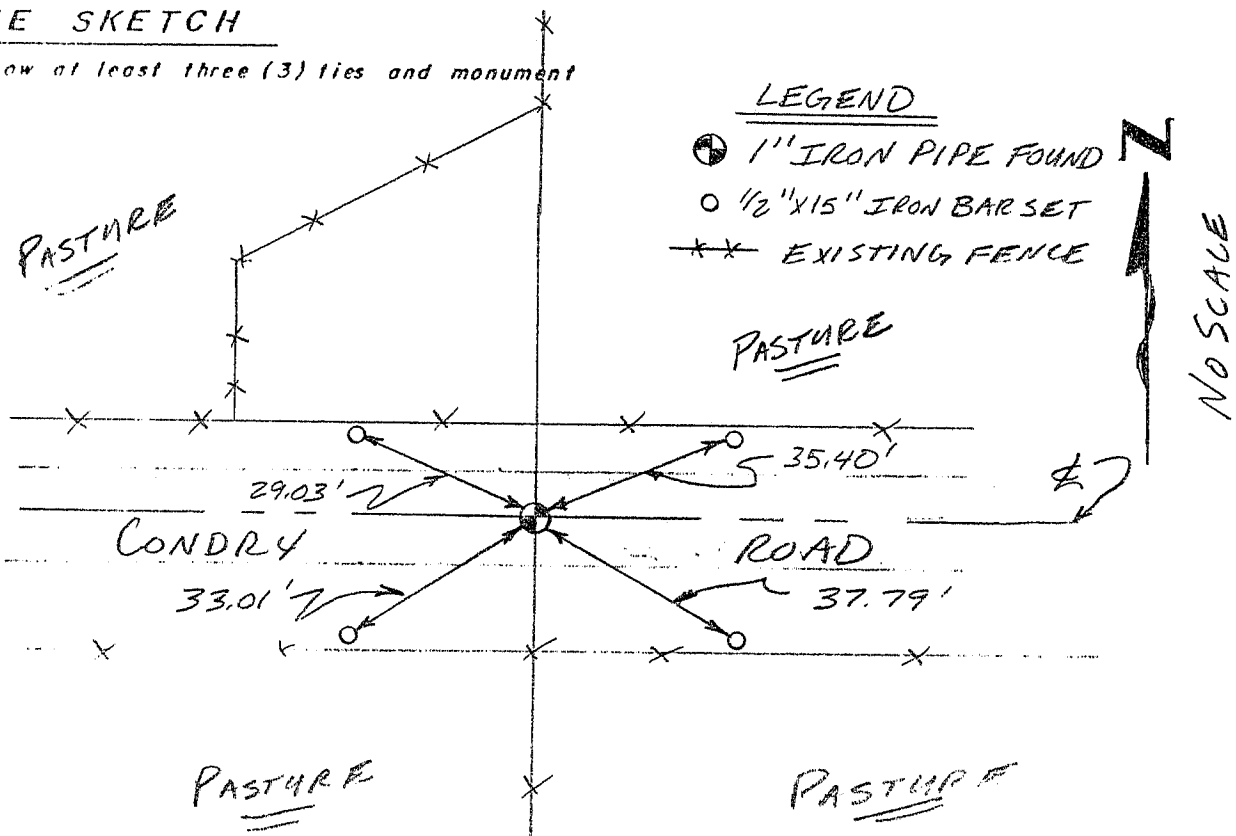
CERTIFIED CORRECT

*Lawrence Schmit*  
Registered Land Surveyor

DATE: 12-15-97

TIE SKETCH

Show at least three (3) ties and monument



LEGEND

- ⊙ 1" IRON PIPE FOUND
- 1/2" x 15" IRON BAR SET
- XX EXISTING FENCE