

GRANT COUNTY CERTIFIED LAND CORNER

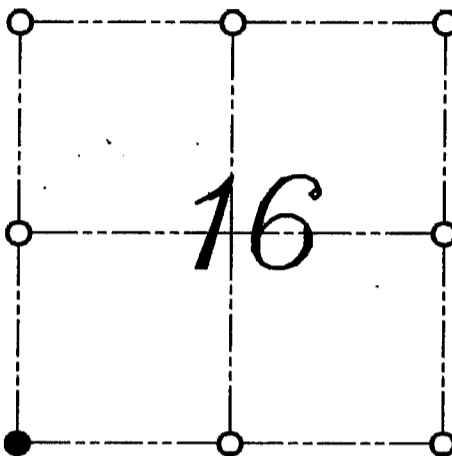
CORNER NUMBER 69

CERTIFICATE:

I, LARRY L. AUSTIN, DO HEREBY CERTIFY THAT ON SIXTH DAY OF MAY, 1999, I FOUND OCCUPATIONAL EVIDENCE OF THE SOUTHWEST CORNER SECTION 16, TOWN 4 NORTH, RANGE 1 WEST, OF THE FOURTH PRINCIPAL MERIDIAN, AND I RE-ESTABLISHED SAID CORNER ACCORDING TO THE WISCONSIN STATUTES AS SHOWN AND DESCRIBED HEREON.

DATED THIS FIFTH DAY OF JULY 1999

Larry L. Austin
LARRY L. AUSTIN S-1903



● = CORNER LOCATION
SOUTHWEST CORNER OF
SECTION 16, T 4 N R 1 W
TOWN OF LIMA

HISTORY OF ORIGINAL CORNER ESTABLISHMENT:

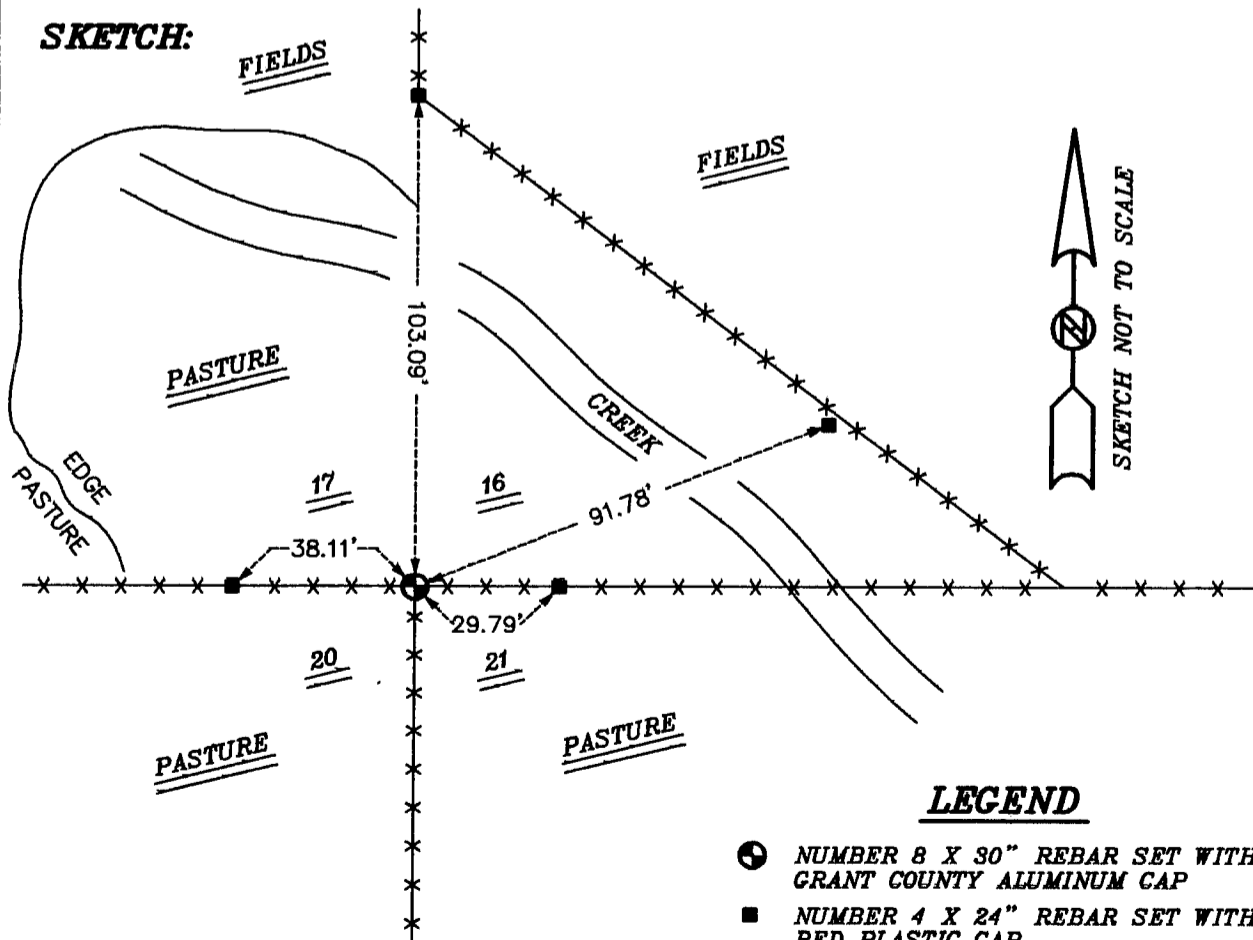
CORNER WAS SET IN 1833 BY ROBERT CLARK. NO OTHER SURVEY RECORDS OF THE CORNER WERE FOUND.

DESCRIPTION OF CORNER EVIDENCE FOUND:

I FOUND AN OCCUPIED FENCE CORNER AT THIS LOCATION AND ACCEPTED IT'S LOCATION AFTER AN E.D.M. AND G.P.S. TRAVERSE OF THE AREA.

DESCRIPTION OF CORNER AND WITNESS MONUMENTS, REFERENCES AND ACCESSORIES USED TO PERPETUATE THE ORIGINAL OR RE-ESTABLISHED LOCATION OF THIS CORNER:
WITNESS TO THE CORNER LOCATION: BOBBY SEDGWICK ; SHELBY BLINDERT

SKETCH:



LEGEND

- ⊙ NUMBER 8 X 30" REBAR SET WITH GRANT COUNTY ALUMINUM CAP
- NUMBER 4 X 24" REBAR SET WITH RED PLASTIC CAP
- ×× EXISTING FENCE LOCATION