

GRANT COUNTY

Survey Monument Record

TYPE OF MONUMENT GRANT County Alum. Mon.

STATE PLANE COORDINATES: N _____
E _____

ELEVATION — M.S.L. DATUM: _____

THETA ANGLE: _____

FIELD BOOK _____

PAGE _____

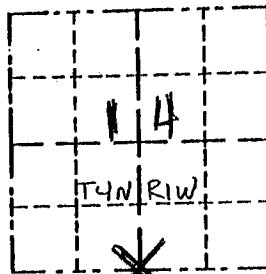
CORNER NO. 64

SECTION 14

TOWN 4N

RANGE 1W

S 1/4 Cor



LOCATION
(Indicated by "X")

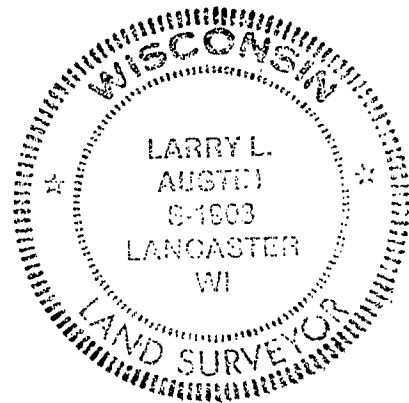
BASIS FOR MONUMENT LOCATION

(Use reverse side if necessary)

Show info such as: History of corner, with reference to Vol. and pg., dates, surveyor; exact description of monument replaced; if location computed, by taped or EDM traverse; landowner, remarks, etc.

SEAL:

CORNER WAS ORIGINALLY SET BY ROBERT CLARK IN 1833. NO RECORD OF CORNER FOUND SINCE ORIGINAL SURVEYS. I SET THE CORNER AT OCCUPIED LOCATION AFTER VERIFICATION BY EDM TRAVERSE OF THE AREA.



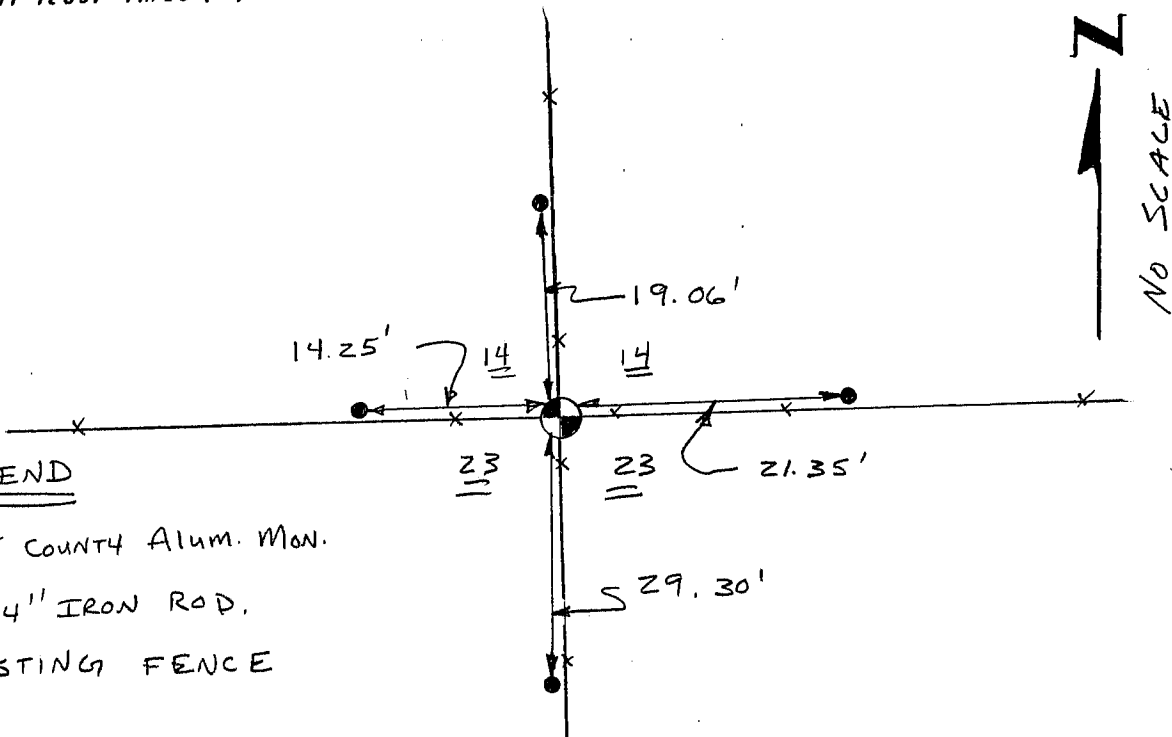
CERTIFIED CORRECT

Larry L. Austen
Registered Land Surveyor

DATE: 9-15-95

TIE SKETCH

Show at least three (3) ties and monument



LEGEND

⊕ GRANT COUNTY Alum. Mon.

● 3/8" x 24" IRON ROD.

— X — EXISTING FENCE