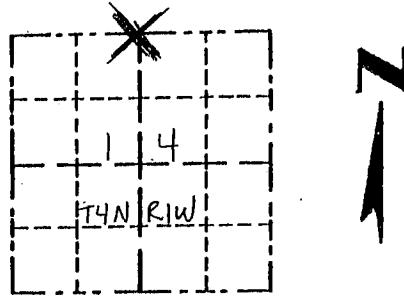


# GRANT COUNTY

## Survey Monument Record

CORNER NO. 44  
 SECTION 14  
 TOWN 4N  
 RANGE 1W  
N 1/4 Cor

TYPE OF MONUMENT 1" Squ. BAR SET  
 STATE PLANE COORDINATES: N \_\_\_\_\_  
 E \_\_\_\_\_  
 ELEVATION — M.S.L. DATUM: \_\_\_\_\_  
 THETA ANGLE: \_\_\_\_\_  
 FIELD BOOK: \_\_\_\_\_  
 PAGE \_\_\_\_\_



LOCATION  
(Indicated by "X")

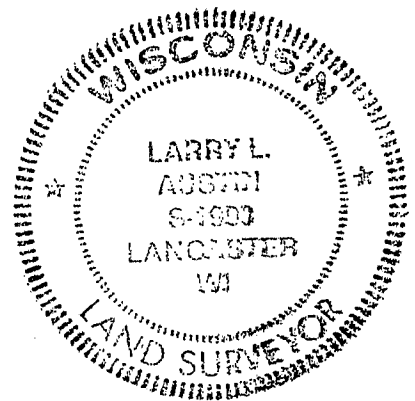
### BASIS FOR MONUMENT LOCATION

(Use reverse side if necessary)

Show info such as: History of corner, with reference to Vol. and pg., dates, surveyor; exact description of monument replaced; if location computed, by taped or EDM traverse; landowner, remarks, etc.

SEAL:

CORNER WAS ORIGINALLY SET BY ROBERT CLARK IN 1833. NO RECORD OF THE CORNER FOUND SINCE THE ORIGINAL SURVEYS, I SET THE CORNER AT OCCUPIED LOCATION AFTER VERIFICATION BY EDM TRAVERSE



CERTIFIED CORRECT

*Larry L. Austin*  
 Registered Land Surveyor

DATE: 9/15/95

### TIE SKETCH

Show at least three (3) ties and monument

