

**U.S. PUBLIC LAND SURVEY MONUMENT RECORD – GRANT COUNTY, WI**

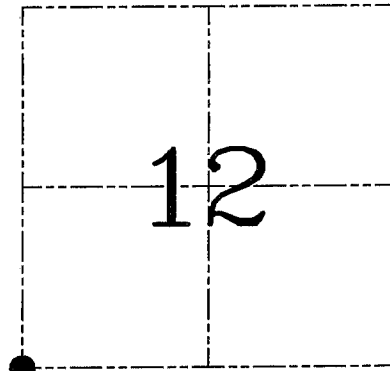
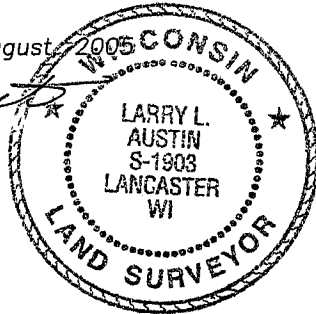
**Section 12, Town 4 North Range 1 West, Town of Lima**

CERTIFICATE

I, Larry L. Austin, do hereby certify that the corner location on this record was determined by me and/or under my direct supervision and that this U.S. public land survey monument record is correct and complete to the best of my knowledge and belief.

Dated this 10th day of August, 2005

*Larry L. Austin*  
 Larry L. Austin S-1903



● = CORNER LOCATION

HISTORY OF CORNER ESTABLISHMENT

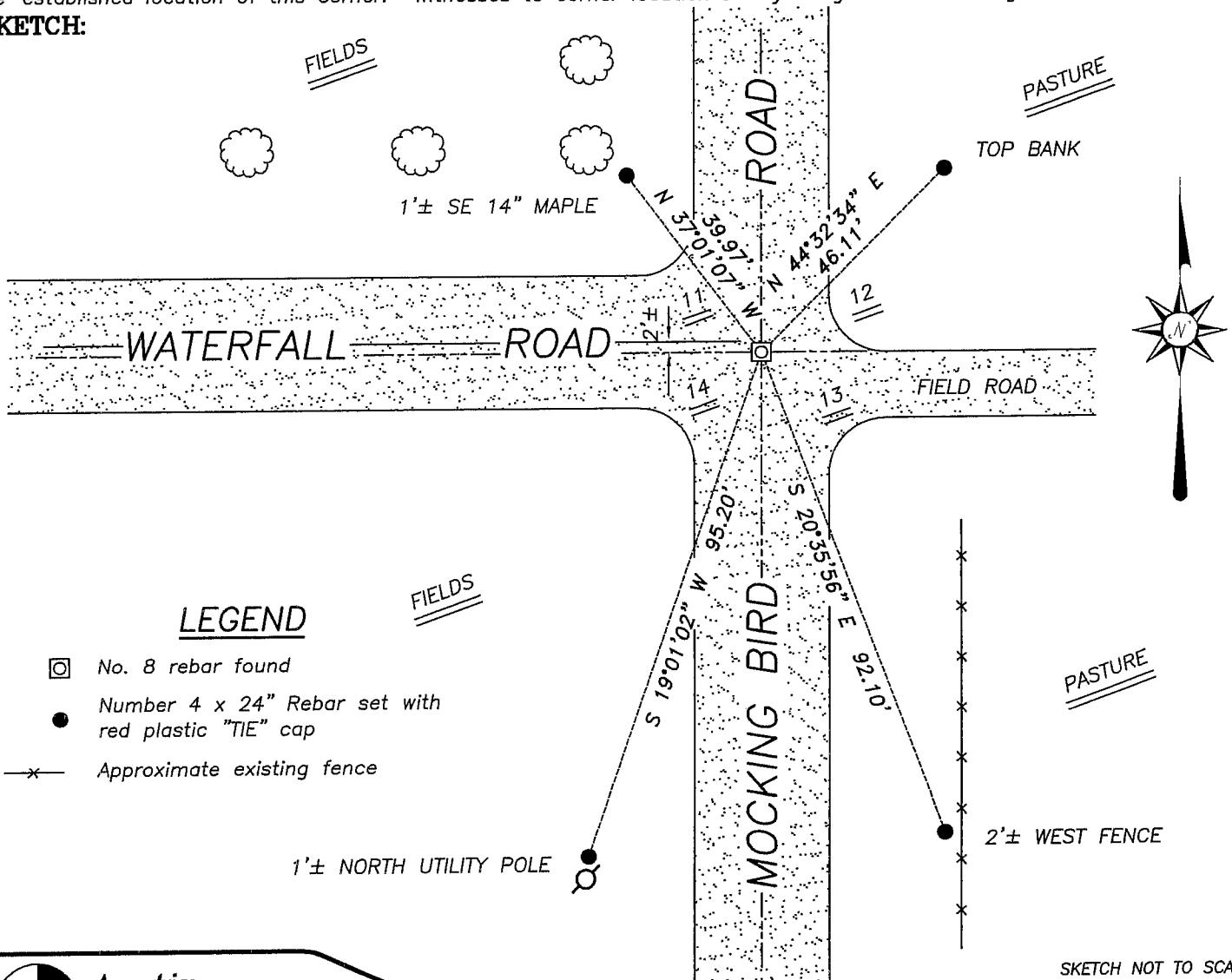
Corner was originally set in 1833 by Clark. In 1892 Sampson found the remains of both Bearing trees. No other record of the corner was found.

DESCRIPTION OF CORNER EVIDENCE FOUND

I found and accepted the Number 8 rebar at this location after an EDM & GPS traverse of the area.

DESCRIPTION OF CORNER AND WITNESS MONUMENTS, references and accessories used to perpetuate the original or re-established location of this corner. Witnesses to corner location Bobby Sedgwick & Brad Digman & Shane Austin

**SKETCH:**

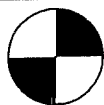


LEGEND

- ⊙ No. 8 rebar found
- Number 4 x 24" Rebar set with red plastic "TIE" cap
- x— Approximate existing fence



SKETCH NOT TO SCALE



**Austin Engineering LLC**

4211 HWY 81 E, LANCASTER, WI 53813  
 PHONE 608-723-6363 FAX 608-723-6702

JOB NUMBER 05S050  
 FIELDBOOK: TDSR, 2512  
 G:\GRANTDOT\T5NR1W  
 H:\TIE\T4NR1W\43

DRAWN BY: SW AUSTIN  
 APPROVED: LL AUSTIN