

GRANT COUNTY CERTIFIED LAND CORNER

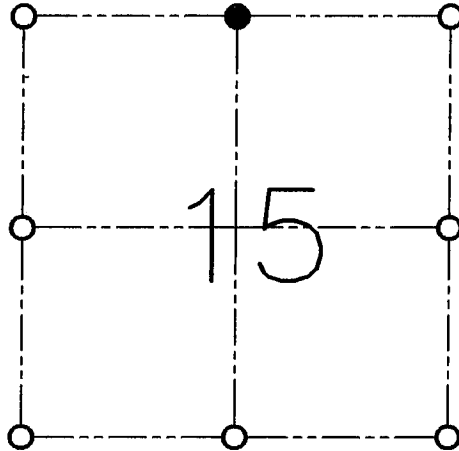
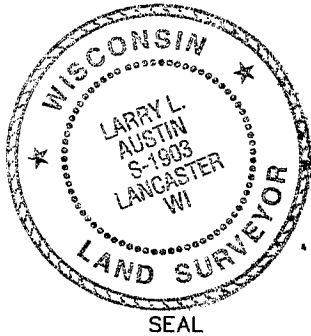
CORNER NO. 46

CERTIFICATE:

I, LARRY L. AUSTIN, DO HEREBY CERTIFY THAT ON SIXTEENTH DAY OF FEBRUARY, 1998, I FOUND NO EVIDENCE OF THE NORTH 1/4 CORNER OF SECTION 15, TOWN 4 NORTH, RANGE 1 WEST, OF THE FOURTH PRINCIPAL MERIDIAN, AND I RE-ESTABLISHED SAID CORNER ACCORDING TO THE WISCONSIN STATUTES AS SHOWN AND DESCRIBED HEREON.

DATED THIS SIXTEENTH DAY OF MARCH, 1998

Larry L. Austin
LARRY L. AUSTIN S-1903



● = CORNER LOCATION

**NORTH 1/4 OF SECTION 15
T 4 N R 1 W
TOWN OF LIMA**

HISTORY OF ORIGINAL CORNER ESTABLISHMENT:

CORNER WAS SET IN 1833 BY ROBERT CLARK. IN 1892 SAMPSON LOCATED THE CORNER.

DESCRIPTION OF CORNER EVIDENCE FOUND:

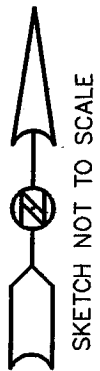
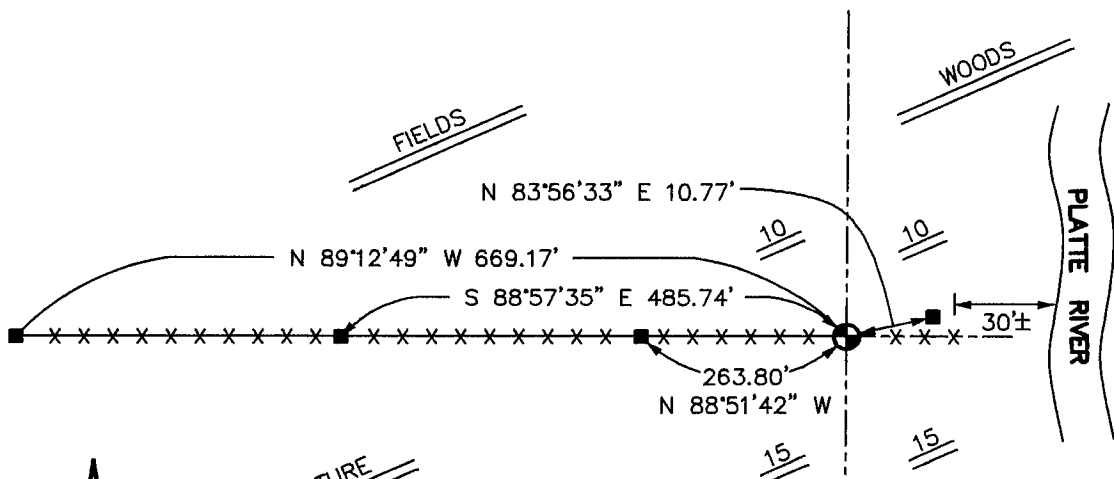
I FOUND NO ORIGINAL EVIDENCE OF THE CORNER. I SET THE CORNER AT THE RECORDED DISTANCE BY SAMPSON FROM THE NORTHWEST CORNER AND ONLINE WITH THE OCCUPIED 40 WEST OF THE CORNER. VERIFIED THIS LOCATION USING E.D.M. AND G.P.S. METHODS.

DESCRIPTION OF CORNER AND WITNESS MONUMENTS, REFERENCES AND ACCESSORIES USED TO PERPETUATE THE ORIGINAL OR RE-ESTABLISHED LOCATION OF THIS CORNER:

WITNESS TO THE CORNER LOCATION:

BOBBY SEDGWICK
SHELBY BLINDERT

SKETCH:



LEGEND

- NO. 8 X 30" REBAR SET WITH GRANT COUNTY ALUMINUM CAP
- NO. 4 X 16" REBAR SET
- x-x- EXISTING FENCE