

GRANT COUNTY CERTIFIED LAND CORNER

CERTIFICATE:

I, LARRY L. AUSTIN, DO HEREBY CERTIFY THAT ON SIXTH DAY OF MAY, 1999, I FOUND TESTIMONIAL EVIDENCE OF THE NORTH 1/4 CORNER SECTION 16, TOWN 4 NORTH, RANGE 1 WEST, OF THE FOURTH PRINCIPAL MERIDIAN, AND I RE-ESTABLISHED SAID CORNER ACCORDING TO THE WISCONSIN STATUTES AS SHOWN AND DESCRIBED HEREON.

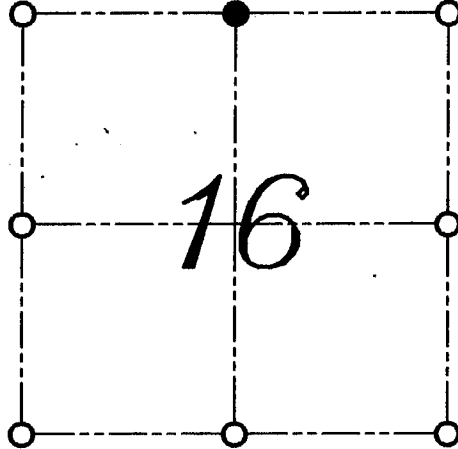
DATED THIS FIFTH DAY OF JULY, 1999

Larry L. Austin
LARRY L. AUSTIN S-1903



SEAL

CORNER NUMBER 48



● = CORNER LOCATION
NORTH 1/4 CORNER OF
SECTION 16, T 4 N R 1 W
TOWN OF LIMA

HISTORY OF ORIGINAL CORNER ESTABLISHMENT:

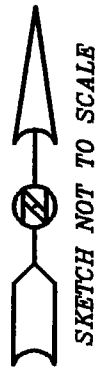
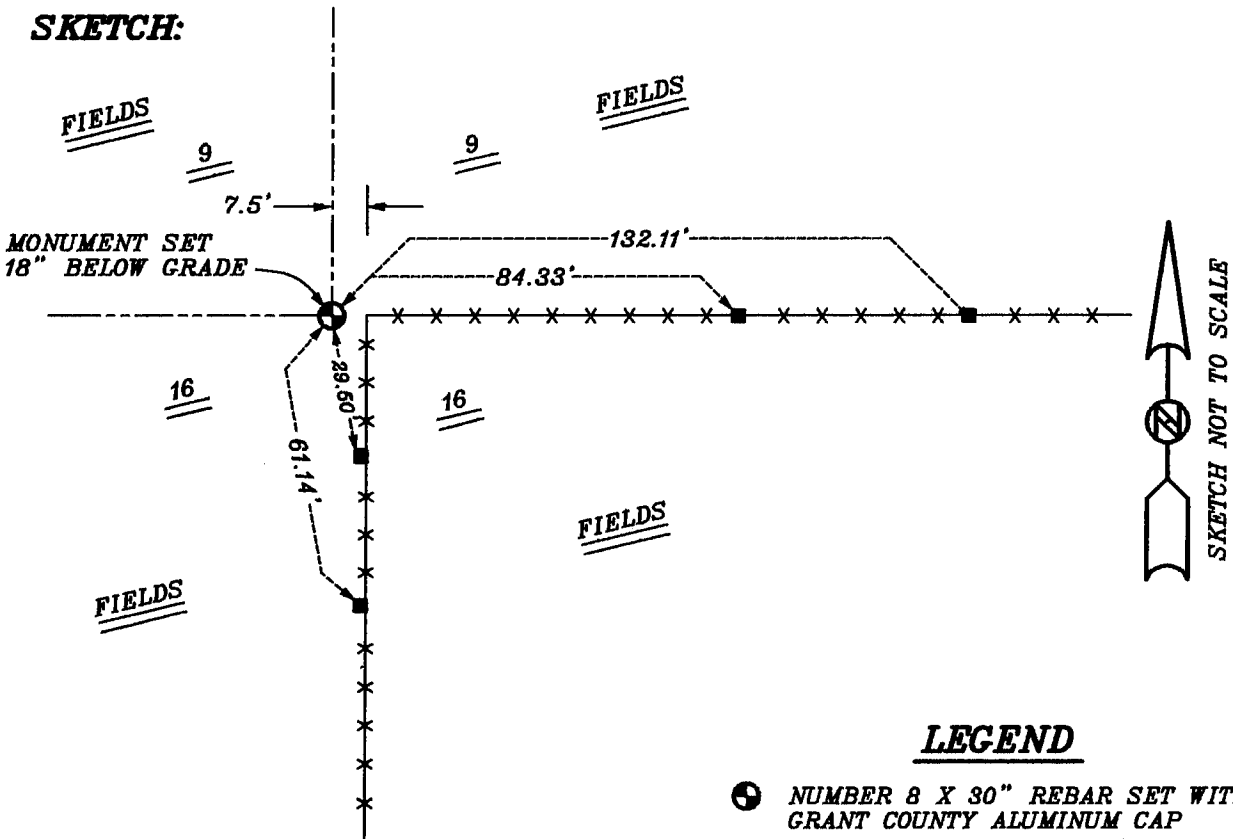
CORNER WAS SET IN 1833 BY ROBERT CLARK
IN 1892 SAMPSON FOUND THE ORIGINAL BEARING TREES.

DESCRIPTION OF CORNER EVIDENCE FOUND:

I SET THE CORNER BY A SINGLE PROPORTION ALONG THE NORTH LINE OF THE NORTHEAST 1/4. THIS LOCATION VERIFIED BY ORAL TESTIMONY FROM DAVID ORTON. VERIFIED THIS LOCATION USING E.D.M. AND G.P.S. METHODS.

DESCRIPTION OF CORNER AND WITNESS MONUMENTS, REFERENCES AND ACCESSORIES USED TO PERPETUATE THE ORIGINAL OR RE-ESTABLISHED LOCATION OF THIS CORNER:
WITNESS TO THE CORNER LOCATION: BOBBY SEDGWICK ; SHELBY BLINDERT

SKETCH:



LEGEND

- NUMBER 8 X 30" REBAR SET WITH GRANT COUNTY ALUMINUM CAP
- NUMBER 4 X 24" REBAR SET WITH RED PLASTIC CAP
- *-* EXISTING FENCE LOCATION