

U.S. PUBLIC LAND SURVEY MONUMENT RECORD - GRANT COUNTY, WI

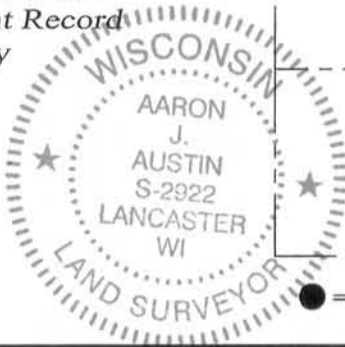
Section 16, Town 4 North Range 1 West, Town of Lima

CERTIFICATE:

I, Aaron J. Austin, do hereby certify that the corner location on this record was determined by me and/or under my direct supervision and that this U.S. Public Land Survey Monument Record is correct and complete to the best of my knowledge and belief.

Dated this 20th day of February, 2014.

Aaron J. Austin
 Aaron J. Austin, S-2922



16

● = CORNER LOCATION

HISTORY OF CORNER ESTABLISHMENT:

- 1833-Original corner by Robert Clark.
- 1847-Geo. Stuntz tied to the corner on a survey in Book B, Page 57.
- 1854-Overton shown the corner on a survey in Book B, Page 354.
- 1892-Charles Sampson reset the corner in Book D, Page 204.
- 1892-Charles Sampson tied to the corner in Book D, Page 205.
- 1998-Larry Austin tied to the corner on a survey in Book 3, Page 25.
- 2006-Larry Austin tied to the corner of Certified Survey Map No. 1251.

DESCRIPTION OF CORNER EVIDENCE FOUND:

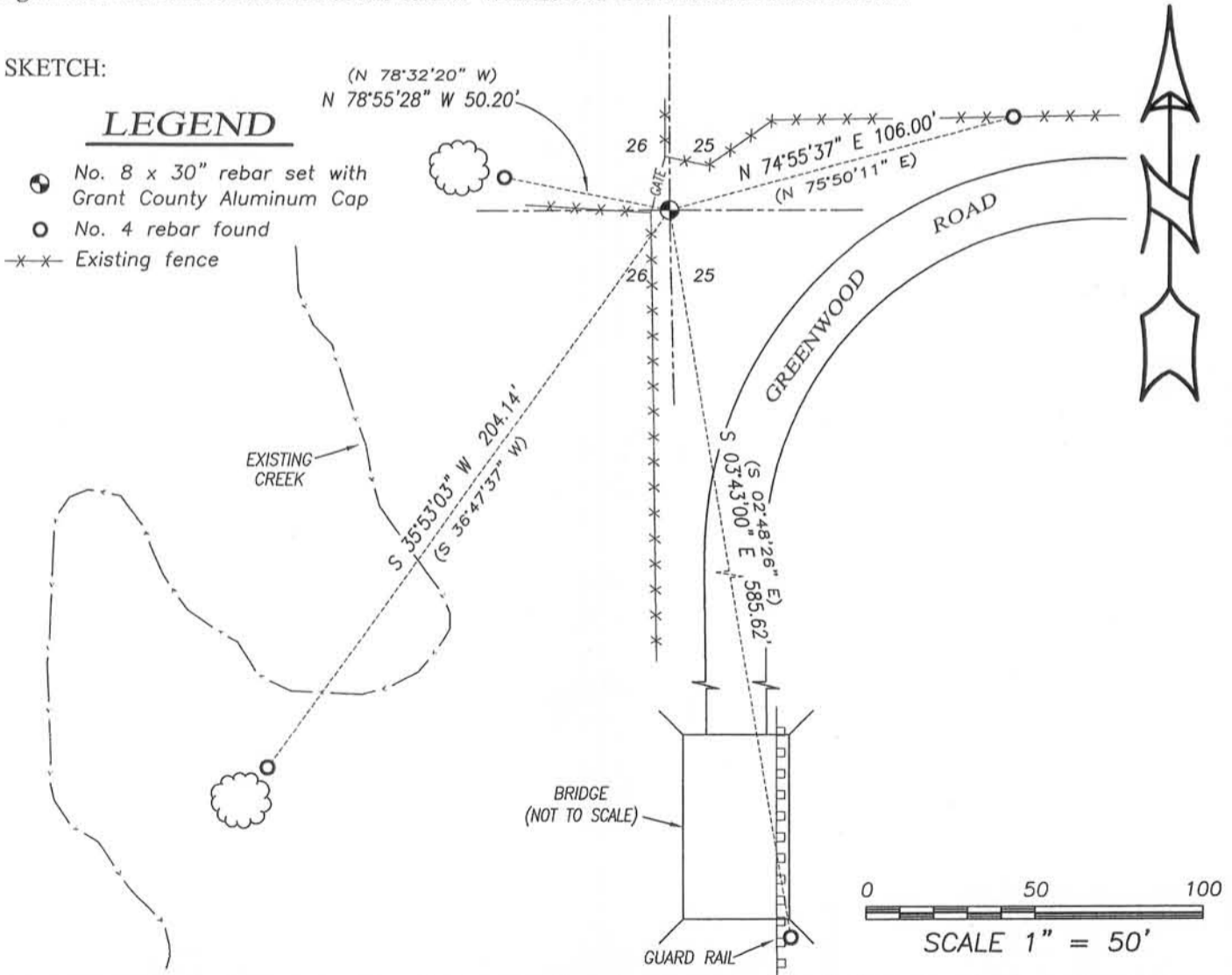
Larry Austin set a No. 8 rebar with a Grant County Aluminum Cap and filed a tie sheet dated 3-16-1998 at this corner location. I was not able to recover the No. 8 rebar. I reset the corner based upon the found existing ties. This location was verified by E.D.M. and G.P.S. methods.

DESCRIPTION OF CORNER AND WITNESS MONUMENTS, references and accessories used to perpetuate the original or re-established location of this corner. Witnesses to corner location Shane Austin.

SKETCH:

LEGEND

- No. 8 x 30" rebar set with Grant County Aluminum Cap
- No. 4 rebar found
- x-x- Existing fence



4211 HWY 81 E, LANCASTER, WI 53813
 PHONE: 608-723-6363 FAX: 608-723-6702

JOB NO: 14s012
 G:\14s012
 H:\TIE\T4NR1W\47(2)

FIELDBOOK: TDSR
 DRAWN BY: AJ AUSTIN
 CREW: SW AUSTIN

GRANT COUNTY CERTIFIED LAND CORNER

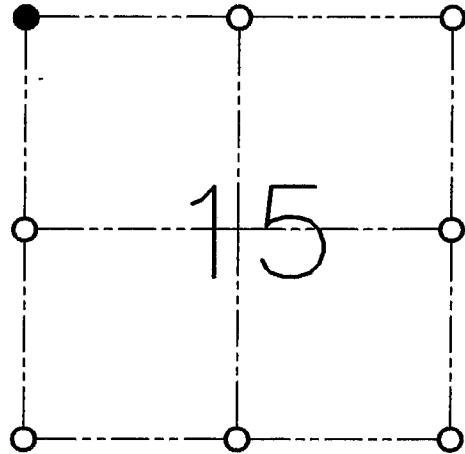
CORNER NO. 47

CERTIFICATE:

I, LARRY L. AUSTIN, DO HEREBY CERTIFY THAT ON SIXTEENTH DAY OF FEBRUARY, 1998, I FOUND EVIDENCE OF THE NORTHWEST CORNER OF SECTION 15, TOWN 4 NORTH, RANGE 1 WEST, OF THE FOURTH PRINCIPAL MERIDIAN, AND I RE-ESTABLISHED SAID CORNER ACCORDING TO THE WISCONSIN STATUTES AS SHOWN AND DESCRIBED HEREON.

DATED THIS SIXTEENTH DAY OF MARCH, 1998

Larry L. Austin
LARRY L. AUSTIN S-1903



● = CORNER LOCATION

**NORTHWEST CORNER OF
SECTION 15, T 4 N R 1 W
TOWN OF LIMA**

HISTORY OF ORIGINAL CORNER ESTABLISHMENT:

CORNER WAS SET IN 1833 BY ROBERT CLARK.
IN 1892 SAMPSON LOCATED THE CORNER.

DESCRIPTION OF CORNER EVIDENCE FOUND:

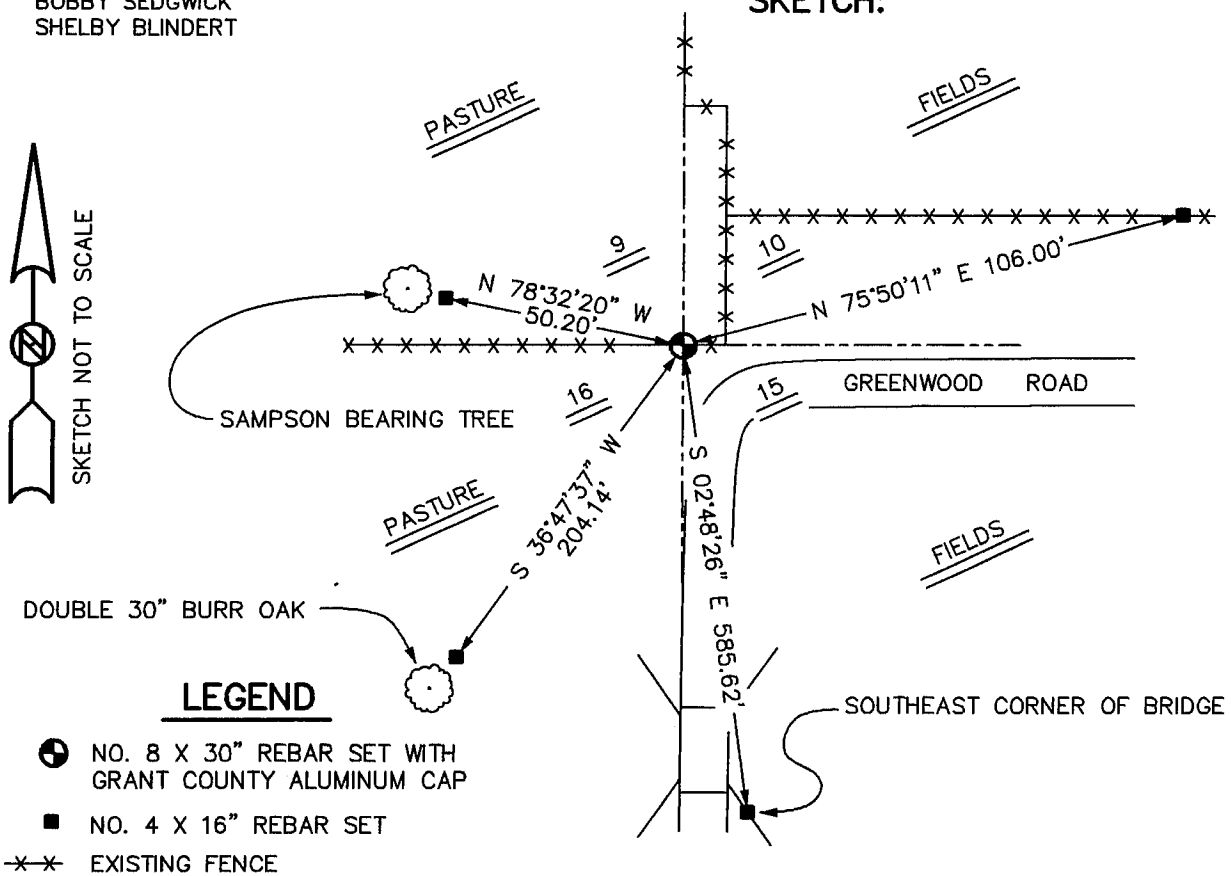
I FOUND A BEARING TREE TIED TO BY SAMPSON. I SET THE CORNER BASED ON THIS TREE. VERIFIED THIS LOCATION USING E.D.M. METHODS.

DESCRIPTION OF CORNER AND WITNESS MONUMENTS, REFERENCES AND ACCESSORIES USED TO PERPETUATE THE ORIGINAL OR RE-ESTABLISHED LOCATION OF THIS CORNER:

WITNESS TO THE CORNER LOCATION:

BOBBY SEDGWICK
SHELBY BLINDERT

SKETCH:



LEGEND

- NO. 8 X 30" REBAR SET WITH GRANT COUNTY ALUMINUM CAP
- NO. 4 X 16" REBAR SET
- *- EXISTING FENCE