

GRANT COUNTY CERTIFIED LAND CORNER

CORNER NUMBER 36

CERTIFICATE:

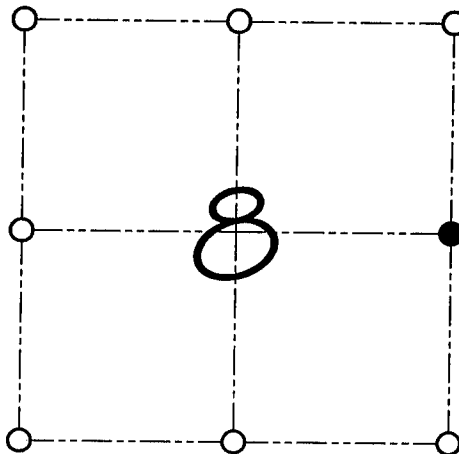
I, Larry L. Austin, do hereby certify that on the 12th day of May, 2000, I found no evidence of the East 1/4 corner of Section 8, Town 4 North, Range 1 West, of the 4th Principal Meridian, and I re-established said corner according to the Wisconsin statutes as shown and described hereon.

Dated this 17th day of May, 2000

Larry L. Austin
Larry L. Austin S-1903



SEAL



● = CORNER LOCATION

EAST 1/4 CORNER OF
SECTION 08, T 4 N R 1 W
TOWN OF LIMA

HISTORY OF ORIGINAL CORNER ESTABLISHMENT:

Corner was originally set in 1833 by Robert Clark.
No other record of the corner was found.

DESCRIPTION OF CORNER EVIDENCE FOUND:

I found no evidence to the location of the corner. I reset the corner based on proportioning measurements north/south of corner. Verified it's location using E.D.M. & G.P.S. methods

DESCRIPTION OF CORNER AND WITNESS MONUMENTS, references and accessories used to perpetuate the original or re-established location of this corner

WITNESS TO THE CORNER LOCATION: SHELBY BLINDERT & BOBBY SEDGWICK

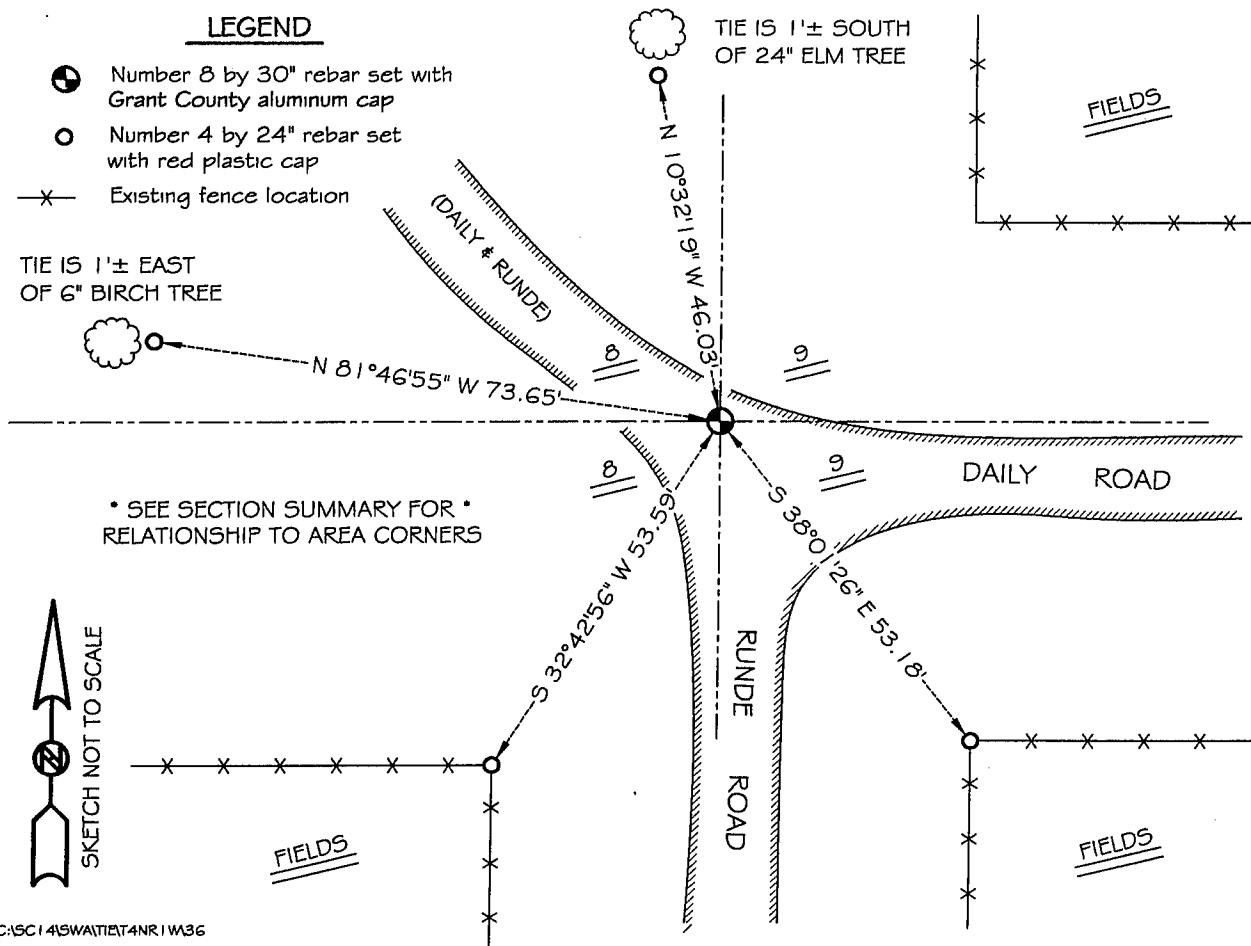
SKETCH:

LEGEND

- ⊙ Number 8 by 30" rebar set with Grant County aluminum cap
- Number 4 by 24" rebar set with red plastic cap
- x— Existing fence location

TIE IS 1'± EAST OF 6" BIRCH TREE

TIE IS 1'± SOUTH OF 24" ELM TREE



* SEE SECTION SUMMARY FOR *
RELATIONSHIP TO AREA CORNERS

