

U.S. PUBLIC LAND SURVEY MONUMENT RECORD

Section 17, Town 4 North Range 1 West, Town of Lima, Grant County, Wisconsin

CERTIFICATE

I, Aaron J. Austin, do hereby certify that the corner location on this record was determined by me and/or under my direct supervision and that this U.S. public land survey monument record is correct and complete to the best of my knowledge and belief.

Aaron J. Austin
 Aaron J. Austin, S-2922

3-8-11
 date



● = CORNER LOCATION

HISTORY OF CORNER

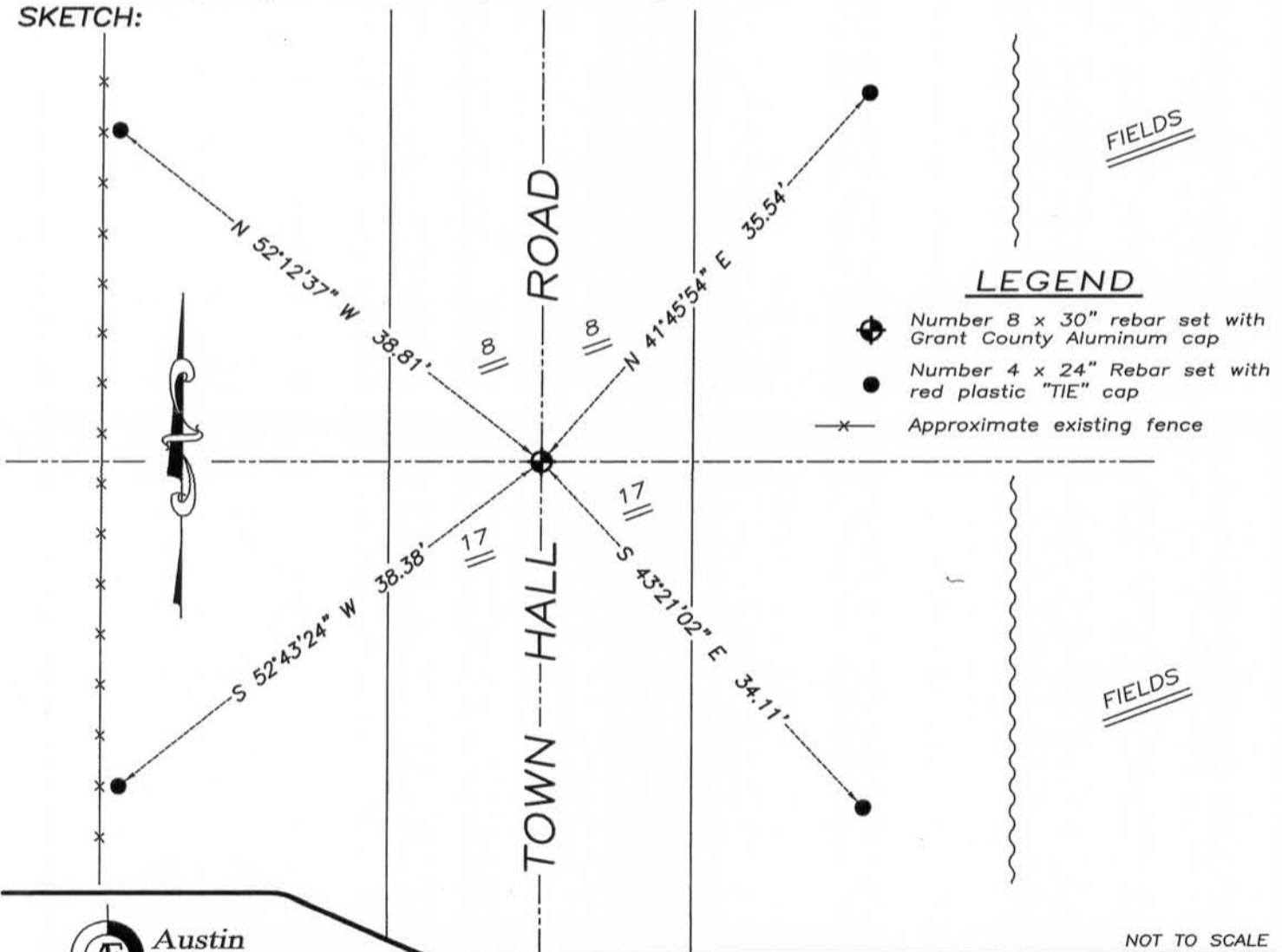
Corner was originally set in the First Quarter of 1833 by Robert Clark. In 1842 Freeman tied to the original corner. No recent record of the corner was found.

CORNER EVIDENCE FOUND

I found the existing North-South road to be the only evidence of the corner location. I set the corner proportionately and on-line between the Northwest and Northeast corners of Section Seventeen. This location fit the occupied centerline of the road. Verified this location using EDM & GPS methods.

DESCRIPTION OF CORNER AND WITNESS MONUMENTS, references and accessories used to perpetuate the original or re-established location of this corner. Witnesses to monument location Bobby Sedgwick & Brad Digman & Shelby Blindert

SKETCH:



LEGEND

- Number 8 x 30" rebar set with Grant County Aluminum cap
- Number 4 x 24" Rebar set with red plastic "TIE" cap
- x- Approximate existing fence

NOT TO SCALE

Austin Engineering LLC
 austinengineeringllc.com
 4211 HWY 81 E, LANCASTER, WI 53813
 PHONE: 608-723-6363 FAX: 608-723-6702

JOB NUMBER 10S172-NOBLE
 FIELDBOOK: TDSR, 10-03
 G:\T4NR1W\16
 H:\TIE\T4NR1W\50

DRAWN BY: SW AUSTIN
 APPROVED: AJ AUSTIN

50

MAR 09 2011