

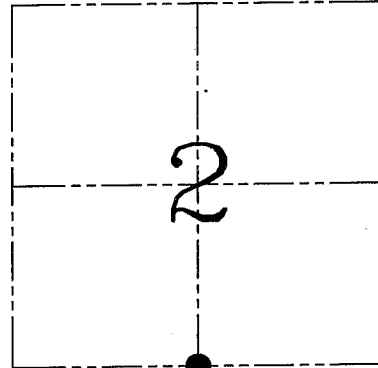
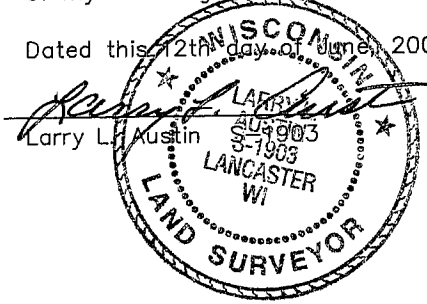
U.S. PUBLIC LAND SURVEY MONUMENT RECORD – GRANT COUNTY, WI

Section 2, Town 4 North Range 1 West, Town of Lima

CERTIFICATE

I, Larry L. Austin, do hereby certify that the corner location on this record was determined by me and/or under my direct supervision and that this U.S. public land survey monument record is correct and complete to the best of my knowledge and belief.

Dated this 12th day of June, 2003



● = CORNER LOCATION

HISTORY OF CORNER ESTABLISHMENT

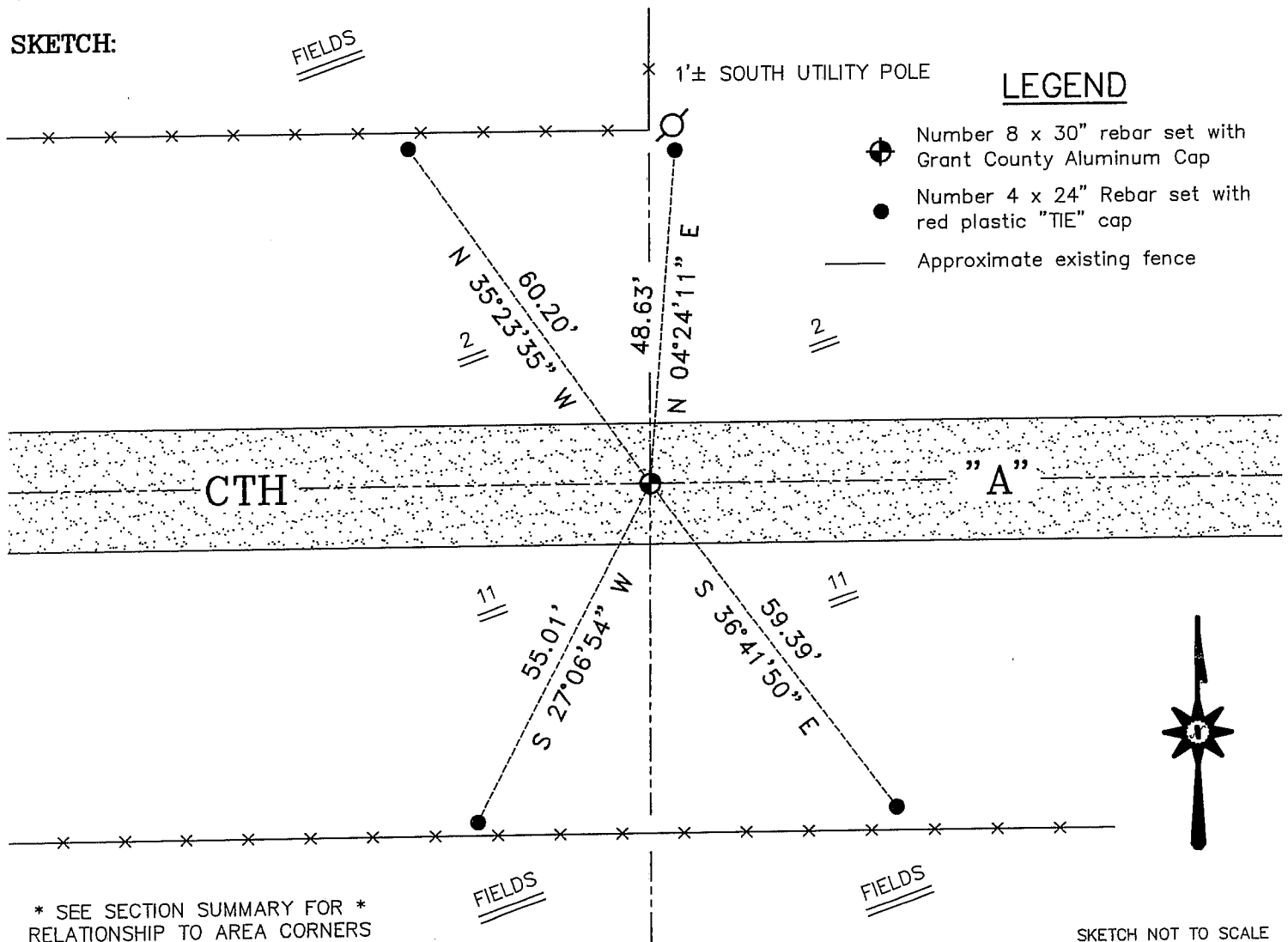
Corner was originally set in 1833 by Robert Clark.
In 1987 I set the corner with a survey for Nodolf-Zimmerman.

DESCRIPTION OF CORNER EVIDENCE FOUND

I was unable to locate the monument. I reset the corner based on measurements to the 1987 survey. Verified it's location based on EDM & GPS methods.

DESCRIPTION OF CORNER AND WITNESS MONUMENTS, references and accessories used to perpetuate the original or re-established location of this corner. Witnesses to corner location Bobby Sedgwick & Shelby Blindert & Brad Digman

SKETCH:



* SEE SECTION SUMMARY FOR *
RELATIONSHIP TO AREA CORNERS

SKETCH NOT TO SCALE

AUSTIN ENGINEERING, LLC

4211 HWY 81 EAST, LANCASTER, WI 53813
PHONE 608-723-6363 FAX 608-723-6702

FIELDBOOK: TDS RNGR, 2303

G: \T5NR1W\36B
H: \TIE\T4NR1W\24
JOB NUMBER 03S081

DRAWN BY: SW AUSTIN
APPROVED: LL AUSTIN

CORNER NUMBER 24