

# U.S. PUBLIC LAND SURVEY MONUMENT RECORD

(a) Identify the corner to the U.S. Public Land Survey System.

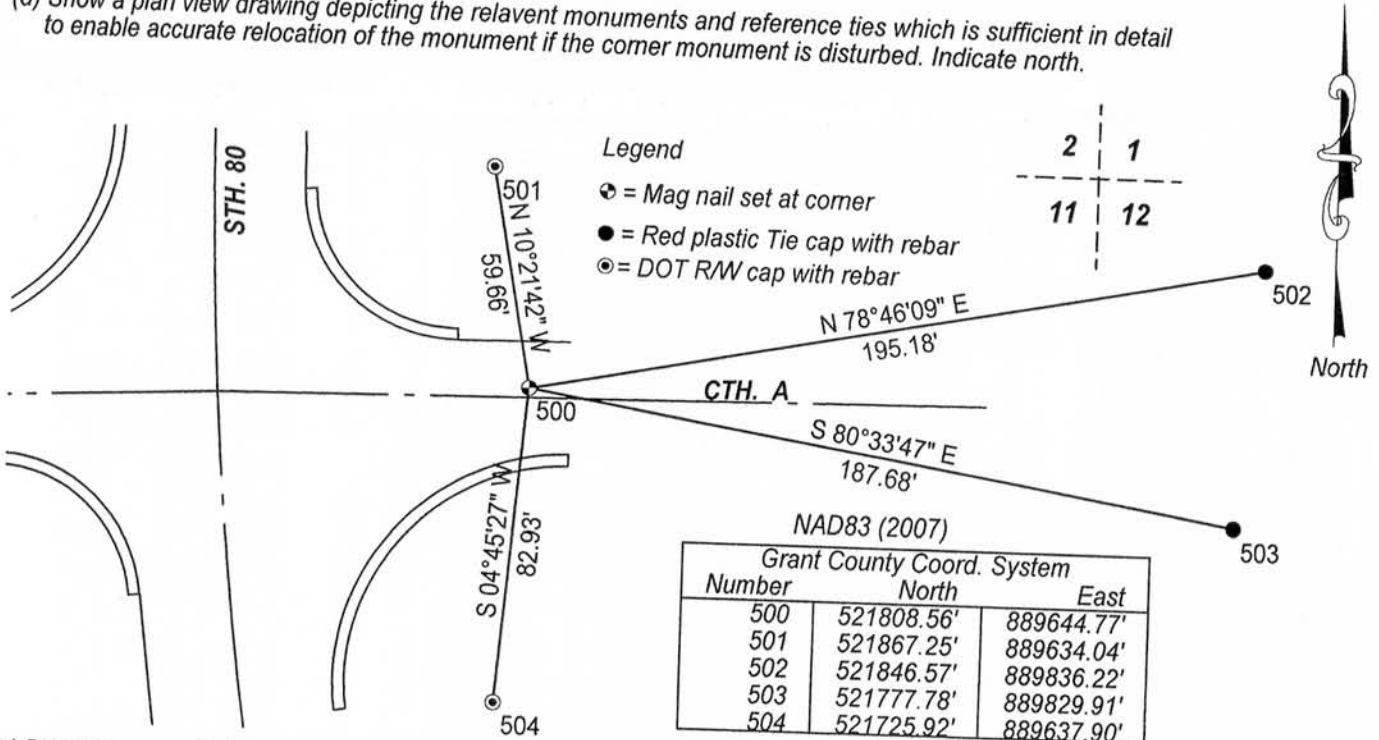
Southeast corner of Section 2, Town 4 North, Range 1 West, Lima Township, Grant County, Wisconsin.

(b) Describe any record evidence, occupational evidence, testimonial evidence or any material evidence you considered, and if the monument was found or placed.

I found and accepted a #6 rebar. The rebar was consistent with the location described in WiDOT Project Plat # 5035-00-21 and existing ties. After road construction, I reset the corner as shown below.

(c) In the plan view below, provide reference ties to at least 4 witness monuments. (Witness monuments shall be made of concrete, material stone, iron or other durable material) Describe the witness monuments.

(d) Show a plan view drawing depicting the relevant monuments and reference ties which is sufficient in detail to enable accurate relocation of the monument if the corner monument is disturbed. Indicate north.



(e) Describe any material discrepancy between the location of the corner as restored and the location of that corner previously restored or reestablished by distance and direction. Show the discrepancy on the plan view drawing under (d), above. Show the distance between the corner as previously restored or reestablished and (1) the corner as restored or reestablished, and (2) to at least 2 of the witness monuments shown on the drawing above.

No known discrepancy.

(f, g & h) Was the corner restored through:

- (1) Acceptance of an obliterated evidence location, or
- (2) Acceptance of a found perpetuated location, or
- (3) Lost corner proportionate methods? If lost corner methods were used, show the method, including the direction and distance to other Public Land survey corners used as evidence or used for proportioning in determining the corner location.

(2) Acceptance of a found perpetuated location.

(i) I Anthony J. Alt, certify that the corner location shown on this record was determined by me or under my direction and control and that this U.S. Public Land Survey Monument is accurate and complete to the best of my knowledge and belief.



Anthony J. Alt  
Signature

11-7-12  
Date

Affix Seal

NOV 21 2012

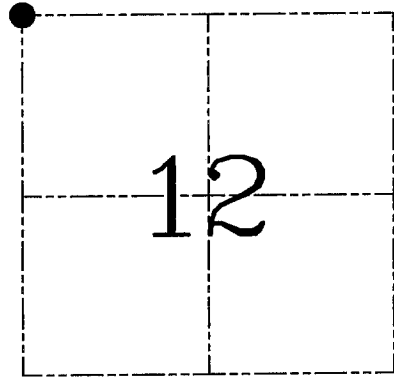
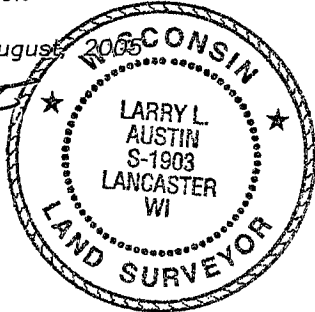
**U.S. PUBLIC LAND SURVEY MONUMENT RECORD – GRANT COUNTY, WI**  
**Section 12, Town 4 North Range 1 West, Town of Lima**

CERTIFICATE

I, Larry L. Austin, do hereby certify that the corner location on this record was determined by me and/or under my direct supervision and that this U.S. public land survey monument record is correct and complete to the best of my knowledge and belief.

Dated this 10th day of August 2005

*Larry L. Austin*  
 Larry L. Austin S-1903



● = CORNER LOCATION

HISTORY OF CORNER ESTABLISHMENT

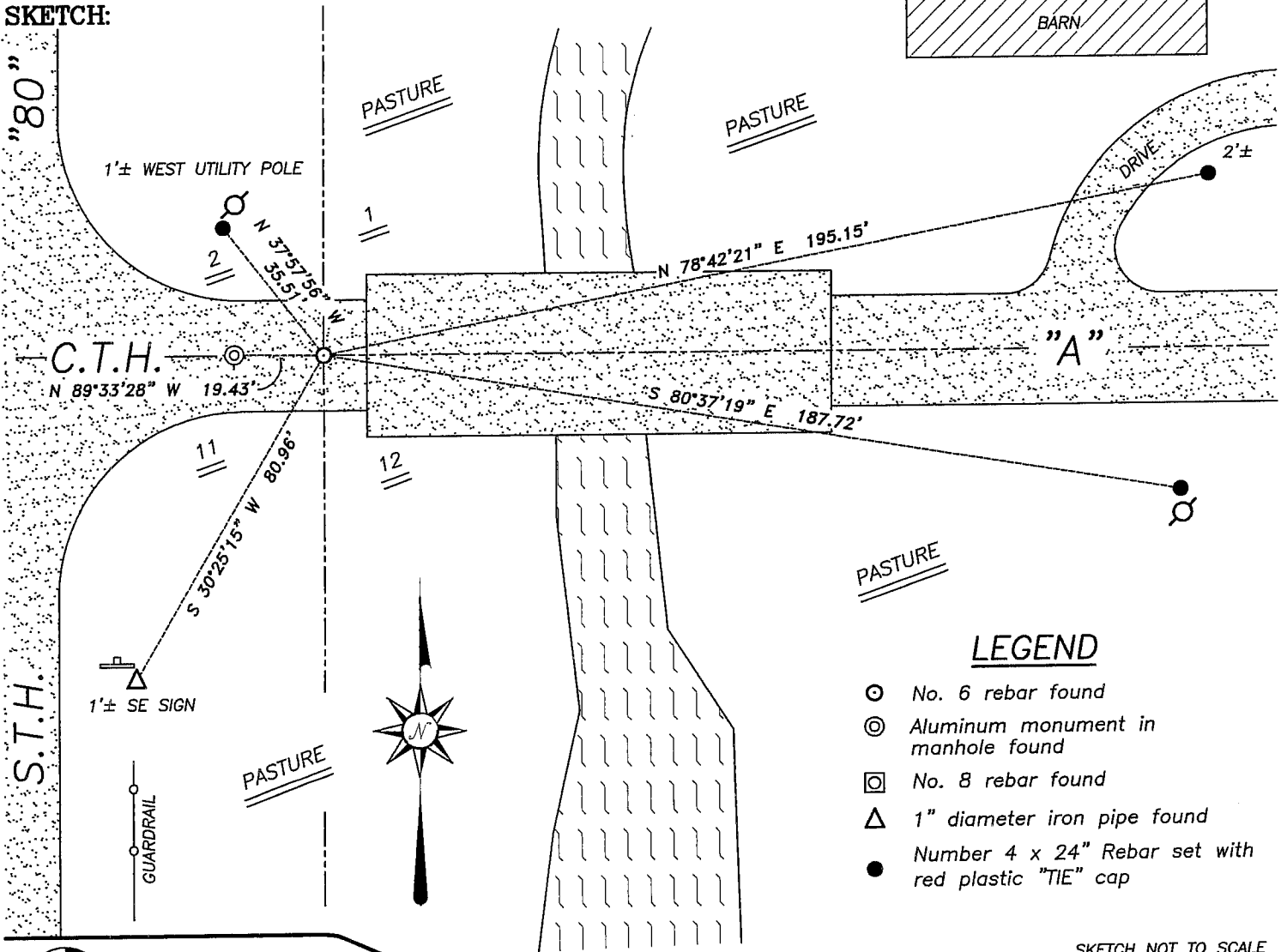
Corner was originally set in 1833 by Clark. In 1980 Davis set a Railroad Spike. The DOT set an Aluminum monument in a manhole. In 1995 I set a 3/4" iron bar.

DESCRIPTION OF CORNER EVIDENCE FOUND

I found and accepted the existing iron bar and set new ties. Verified this location using EDM & GPS methods.

DESCRIPTION OF CORNER AND WITNESS MONUMENTS, references and accessories used to perpetuate the original or re-established location of this corner. Witnesses to corner location Bobby Sedgwick & Brad Digman & Shane Austin

**SKETCH:**



LEGEND

- No. 6 rebar found
- ⊙ Aluminum monument in manhole found
- ◻ No. 8 rebar found
- △ 1" diameter iron pipe found
- Number 4 x 24" Rebar set with red plastic "TIE" cap

SKETCH NOT TO SCALE



**Austin Engineering LLC**

4211 HWY 81 E, LANCASTER, WI 53813  
 PHONE 608-723-6363 FAX 608-723-6702

JOB NUMBER 05S050  
 FIELDBOOK: TDSR, 2512  
 G:\GRANTDOT\T5NR1W  
 H:\TIE\T4NR1W\23

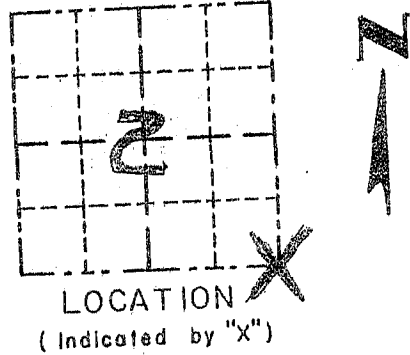
DRAWN BY: SW AUSTIN  
 APPROVED: LL AUSTIN

# GRANT COUNTY

## Survey Monument Record

TYPE OF MONUMENT 3/4" X 24" REBAR SET  
 STATE PLANE COORDINATES: N \_\_\_\_\_  
 E \_\_\_\_\_  
 ELEVATION — M.S.L. DATUM: \_\_\_\_\_  
 THETA ANGLE: \_\_\_\_\_  
 FIELD BOOK: 95-10  
 PAGE: Pg. 5

CORNER NO. 23  
 SECTION 2  
 TOWN 4N  
 RANGE 1W  
SE COR.



### BASIS FOR MONUMENT LOCATION

(Use reverse side if necessary)

Show info such as: History of corner, with reference to Vol. and pg., dates, surveyor; exact description of monument replaced; if location computed, by taped or EDM traverse; landowner, remarks, etc.

SEAL:



CORNER WAS ORIGINALLY SET BY CLARK IN 1833; A 1980 SURVEY BY D. DAVIS STATES RR SPIKE AT THE CORNER LOCATION; APPARENTLY THE DOT SET A MONUMENT AT THE RR SPIKE (NO INFORMATION REGARDING ITS ESTABLISHMENT) IT APPEARS THE D.O.T. MONUMENT'S LOCATION WAS PROPORTIONED IN. I BELIEVE THE CORNER LOCATION TO BE 19.49' E. OF THE D.O.T. MONUMENT BASED ON OCCUR EVIDENCE OF THE HWY. THRU ALTHUR (PLAT OF WASHBURN). THIS LOCATION FITS THE ALIGNMENT TO THE SECTION CORNER 1/2 SOUTH

CERTIFIED CORRECT

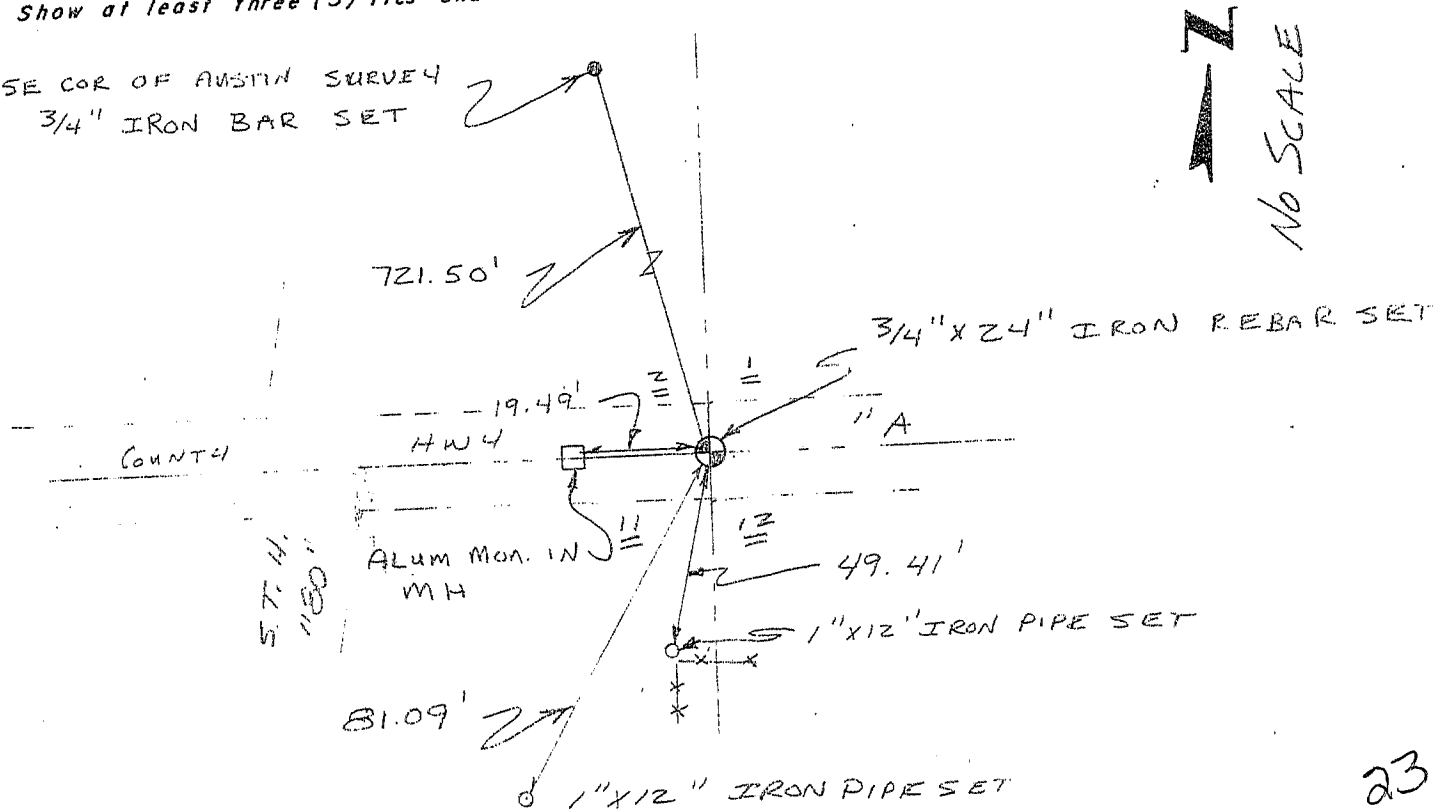
*Larry L. Austin*  
 Registered Land Surveyor

DATE: 8/25/95

### TIE SKETCH

Show at least three (3) ties and monument

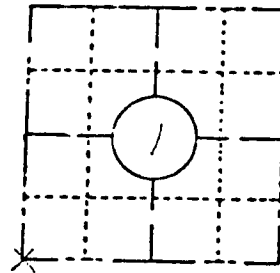
SE COR OF AUSTIN SURVEY  
 3/4" IRON BAR SET



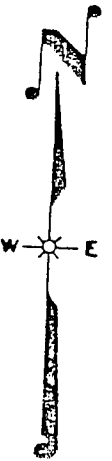
FIELD SURVEY NOTES  
**PRESERVATION OF LANDMARKS**  
 (Pursuant to Section 59.635(7) Wisconsin Statutes)

State Highway Commission of Wisconsin  
 Form E-11-707-65

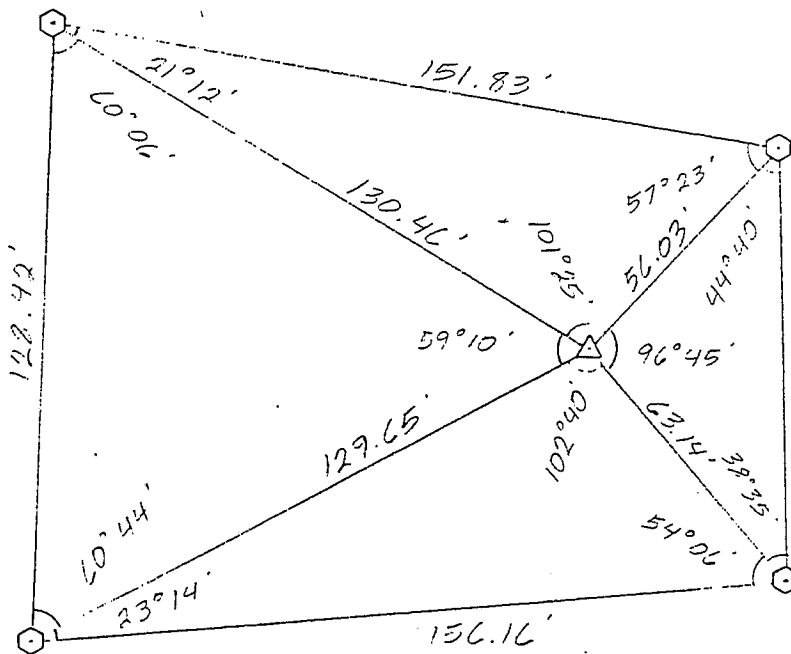
COUNTY		
GRANT		
TOWN		
LIMA		
HIGHWAY		
S.T.H. '80' @ C.T.H. 'A'		
SECTION	TOWNSHIP	RANGE
1	T 4 N	R 1 W
TYPE OF LANDMARK		
SECTION CORNER MONUMENT		



**LOCATION SKETCH**  
 (Location of landmark indicated by "x")



This space for copy of field notes or ties to the above described landmarks



CTH 'A'

5088-00-71  
 0022-74-00  
 Plattville -  
 Water Street  
 Structures  
 STH 80, Grant  
 Point of Sale

SCALE  
 1" = 40'

- = REFERENCE MONUMENT
- = RIGHT OF WAY POST
- ⌋ = WITNESS POST
- △ = SECTION CORNER LOCATION

COUNTY CLERK'S OFFICE	
COUNTY OF	WISCONSIN } 55
DATE RECEIVED FOR RECORD	DATE COPY SENT TO COUNTY SURVEYOR
SIGNATURE OF COUNTY CLERK	