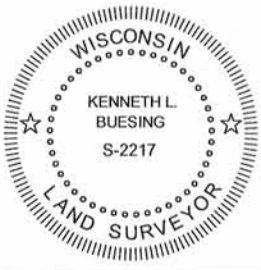
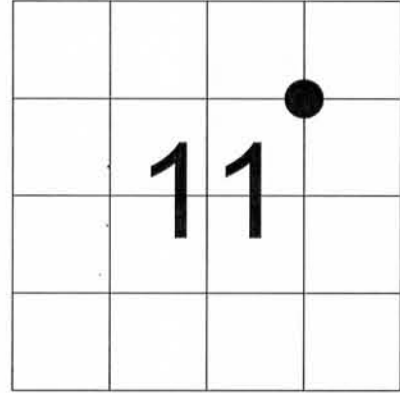


UNITED STATES PUBLIC LAND SURVEY MONUMENT RECORD -GRANT COUNTY, WI  
 Southwest Corner of the Northeast 1/4 of the Northeast 1/4 of Section 11,  
 Town 3 North, Range 6 West, Town of Cassville West



I HEREBY CERTIFY THAT THIS LAND SURVEYING DOCUMENT WAS PREPARED AND THE RELATED SURVEY WORK WAS PERFORMED BY ME OR UNDER MY DIRECT PERSONAL SUPERVISION AND THAT I AM A DULY LICENSED LAND SURVEYOR UNDER THE LAWS OF THE STATE OF WISCONSIN.

*Kenneth L. Buesing* 12, DEC 2011  
 KENNETH L. BUESING (DATE)  
 LICENSE NUMBER S-2217



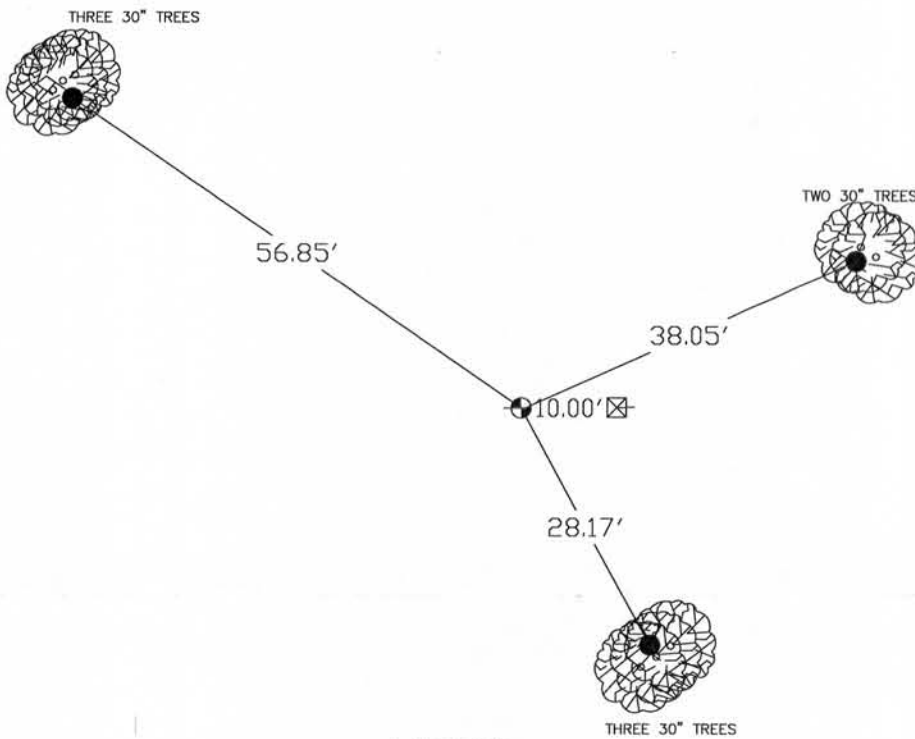
● = CORNER LOCATION

History of Corner

No records found in the county's recorder's office and no monumentation found.

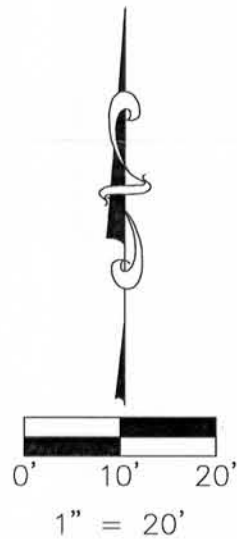
Monument Description and Remarks

Set 3/4" rod @ the SW corner of the NE1/4 of the NE1/4. Corner set 10' from existing iron pipe and in line with the existing iron pipe and the NE corner of SE 1/4 of the NE 1/4 of Section 11. Existing iron pipe was set as part of a 1965 survey completed by Warner Wright.



LEGEND

- PLACED 30" x 3/4" Ø IRON REROD  
BAR MIN. WT. = 1.50 lbs./lin. ft.
- PLACED 24" x 5/8" Ø IRON REROD
- ⊠ FOUND 1 1/2" IRON PIPE



1 SHEET 1	LAND SURVEY MONUMENT RECORD	PROJECT	NO. 11239	<b>BUESING</b> ASSOCIATES INC. ENGINEERS AND SURVEYORS 1212 LOCUST ST, DUBUQUE, IA (563) 556-4389	DATE	REVISIONS	DRAWN BY:
		WITNESSES TO CORNER LOCATION	JOHN HERMSEN NICHOLAS LANGE		12/09/11		NWL
					SCALE:		CHECKED BY:
					1" = 20'		KLB

DEC 14 2011

23D