

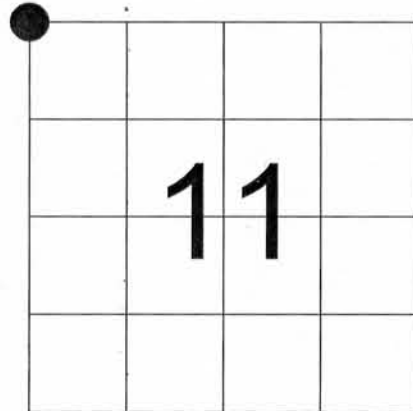
UNITED STATES PUBLIC LAND SURVEY MONUMENT RECORD -GRANT COUNTY, WI

Northwest Corner of Section 11,
Town 3 North, Range 6 West, Town of Cassville West



I HEREBY CERTIFY THAT THIS LAND SURVEYING DOCUMENT WAS PREPARED AND THE RELATED SURVEY WORK WAS PERFORMED BY ME OR UNDER MY DIRECT PERSONAL SUPERVISION AND THAT I AM A DULY LICENSED LAND SURVEYOR UNDER THE LAWS OF THE STATE OF WISCONSIN.

Kenneth L. Buesing 12, Dec. 2011
 KENNETH L. BUESING (DATE)
 LICENSE NUMBER S-2217



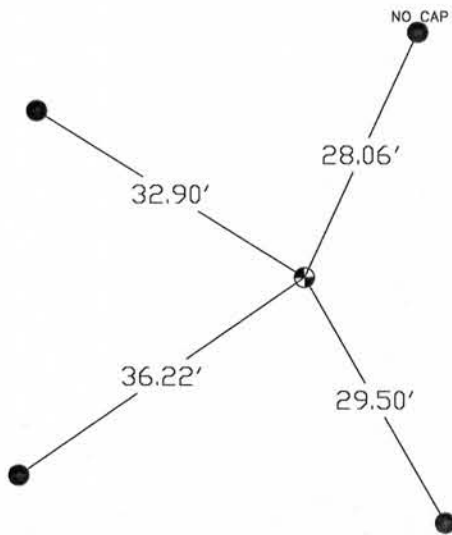
● = CORNER LOCATION

History of Corner

No records found in the county's recorder's office.

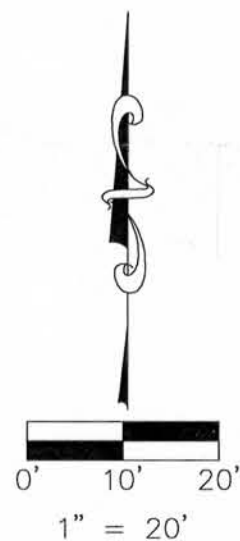
Monument Description and Remarks

Found Army Corps of Engineers Monument set in the 1940's at the NW corner with ties already in place.



LEGEND

- FOUND 5/8"Ø IRON REROD WITH ORANGE CAP JENKINS UNLESS NOTED OTHERWISE
- ⊙ FOUND ARMY CORPS OF ENGINEERS MONUMENT



DEC 14 2011

~~NOV 17 2011~~

SHEET OF	LAND SURVEY MONUMENT RECORD	PROJECT	NO. 11239	BUESING ASSOCIATES INC. ENGINEERS AND SURVEYORS 1212 LOCUST ST., DUBUQUE, IA (563) 556-4389	DATE	REVISIONS	DRAWN BY:
		WITNESSES TO CORNER LOCATION	JOHN HERMSEN NICHOLAS LANGE		12/09/11		NWL
					SCALE:		CHECKED BY:
					1" = 20'		KLB