

# GRANT COUNTY

REC'D MAR 8 1996

## Survey Monument Record

TYPE OF MONUMENT 3/4" IRON BAR FND.

STATE PLANE COORDINATES: N \_\_\_\_\_  
E \_\_\_\_\_

ELEVATION — M.S.L. DATUM: \_\_\_\_\_

THETA ANGLE: \_\_\_\_\_

FIELD BOOK: 95-06

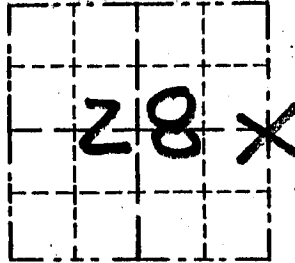
PAGE: (26)

CORNER NO. 97

SECTION 28

TOWN 3N

RANGE 5W



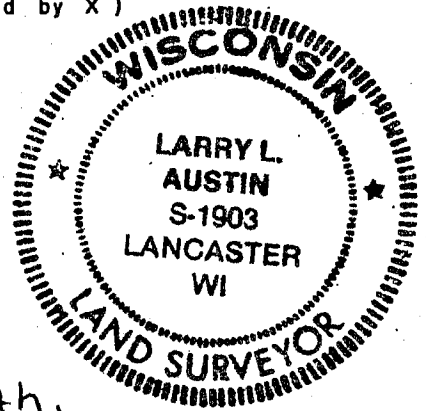
LOCATION  
(Indicated by "X")

### BASIS FOR MONUMENT LOCATION

(Use reverse side if necessary)

- ORIGINAL CORNER SET  
IN 1833 BY LUCIUS LYON SEAL:

- CORNER WAS THEN RESET  
BY DALE CHARLES DIXON  
ON AN UNDATED SURVEY PLAT,  
THEN IN 1989 LARRY L. AUSTIN  
VERIFIED ITS LOCATION 1/2 mi North,  
BY EDM MEASUREMENT, AND  
ACCEPTED ITS LOCATION.



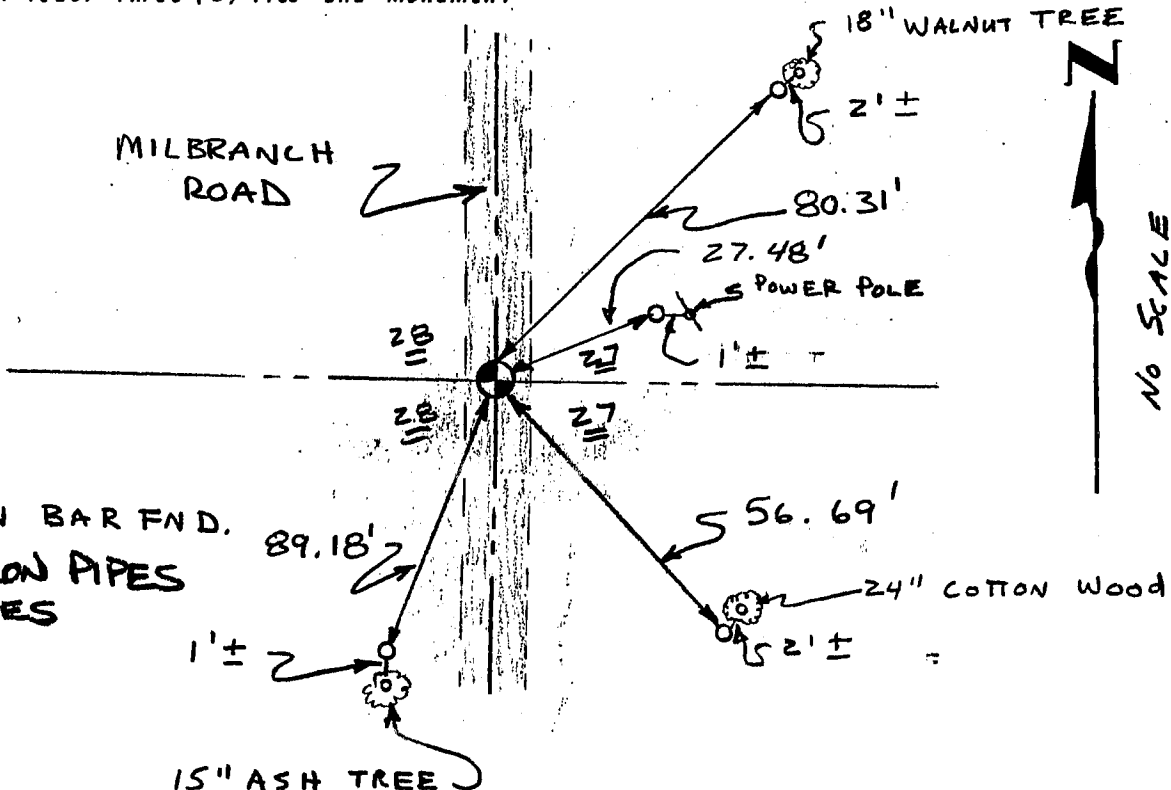
CERTIFIED CORRECT

*Larry L. Austin*  
Registered Land Surveyor

DATE: 2/1/96

### TIE SKETCH

Show at least three (3) ties and monument



#### LEGEND

- ⊕ 3/4" IRON BAR FND.
- 1" x 12" IRON PIPES SET = TIES