

# GRANT COUNTY CERTIFIED LAND CORNER

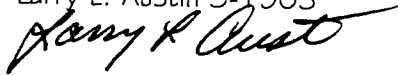
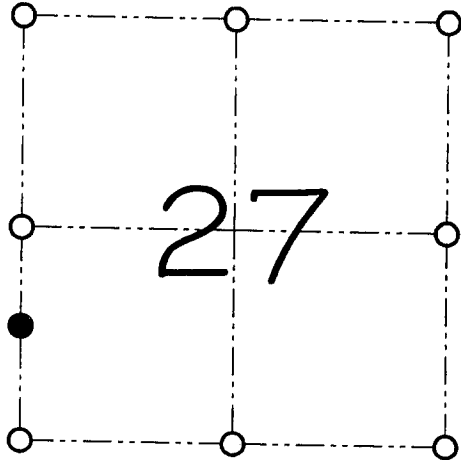
CORNER NUMBER 107  
REFERENCE MONUMENT

**CERTIFICATE:**

I, Larry L. Austin, do hereby certify that on the 10th day of July, 2000, I found evidence of a Reference monument for the Southwest corner of Section 27, Town 3 North, Range 5 West, of the 4th Principal Meridian, and I re-established said corner according to the Wisconsin statutes as shown and described hereon.

Dated this 1st day of September, 2000

Larry L. Austin S-1903

● = REFERENCE MONUMENT

REFERENCE MONUMENT FOR THE  
SOUTHWEST CORNER OF  
SECTION 27, T 3 N R 5 W  
TOWN OF CASSVILLE

**HISTORY OF ORIGINAL CORNER ESTABLISHMENT:**

Corner was originally set in 1832 by Lucius Lyon.  
Kerst surveyed the meander line and set a 1" iron pipe in 1980

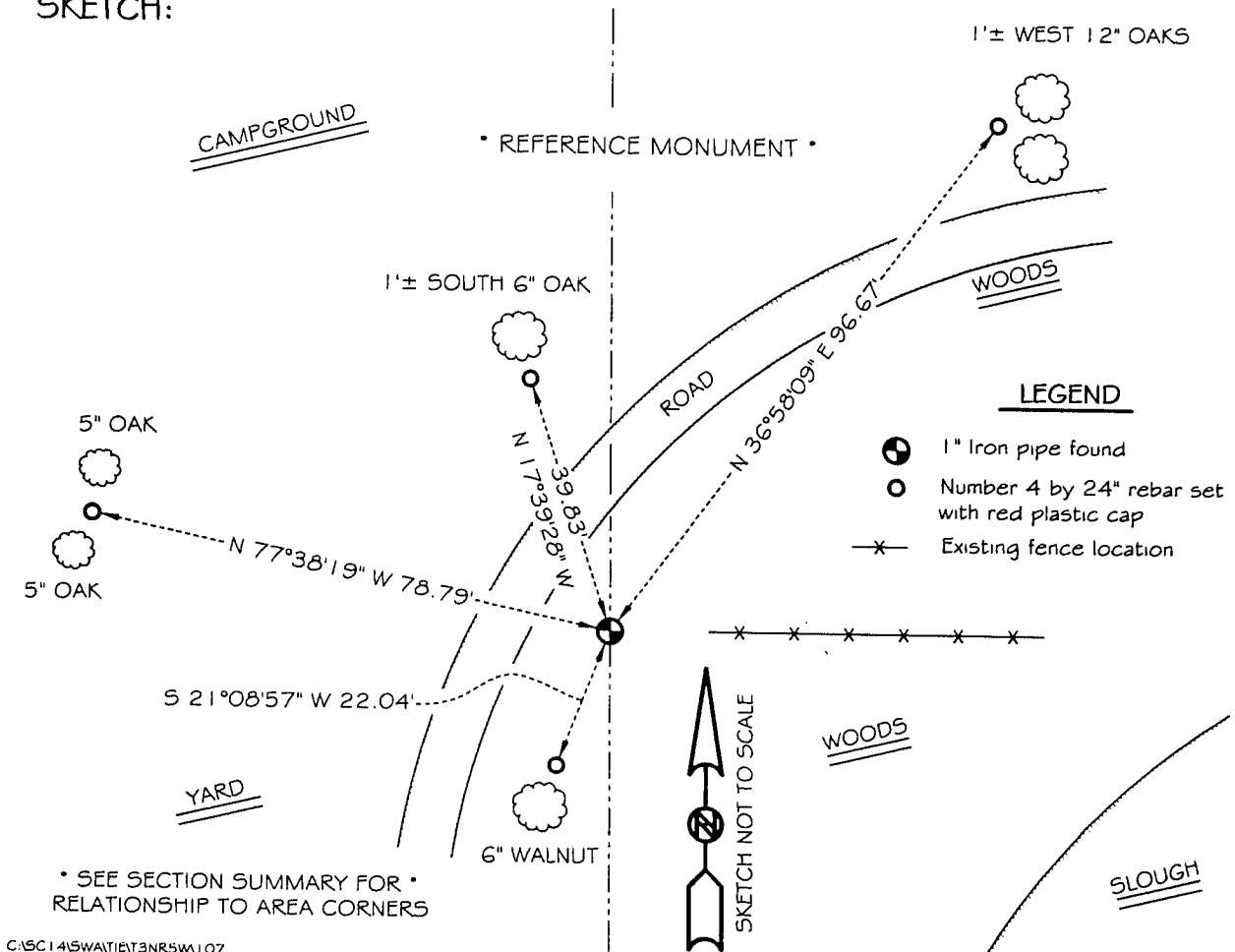
**DESCRIPTION OF CORNER EVIDENCE FOUND:**

I found the 1" iron pipe and accepted it's  
location after an EDM & GPS traverse of the area.

**DESCRIPTION OF CORNER AND WITNESS MONUMENTS, references and accessories used to perpetuate the original or re-established location of this corner**

WITNESS TO THE CORNER LOCATION: LAUREN SAWDEY & BOBBY SEDGWICK

**SKETCH:**



\* SEE SECTION SUMMARY FOR \*  
RELATIONSHIP TO AREA CORNERS