

# GRANT COUNTY CERTIFIED LAND CORNER

CORNER NUMBER 99

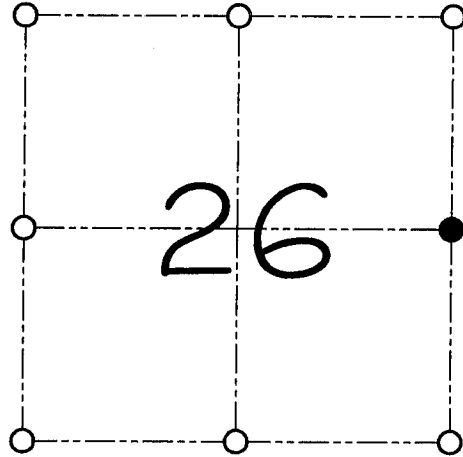
**CERTIFICATE:**

I, Larry L. Austin, do hereby certify that on the 31st day of March, 2000, I found evidence of the East 1/4 corner of Section 26, Town 3 North, Range 5 West, of the 4th Principal Meridian, and I re-established said corner according to the Wisconsin statutes as shown and described hereon.

Dated this 31st day of May, 2000

*Larry L. Austin*  
Larry L. Austin S-1903

Grant County Cook  
N 471921.74  
E 763066.8



● = CORNER LOCATION

EAST 1/4 CORNER OF SECTION 26, T 3 N R 5 W TOWN OF CASSVILLE

**HISTORY OF ORIGINAL CORNER ESTABLISHMENT:**

Corner was originally set in 1833 by Lucius Lyon.  
In 1881 JC Scott tied to the corner, no monument set.

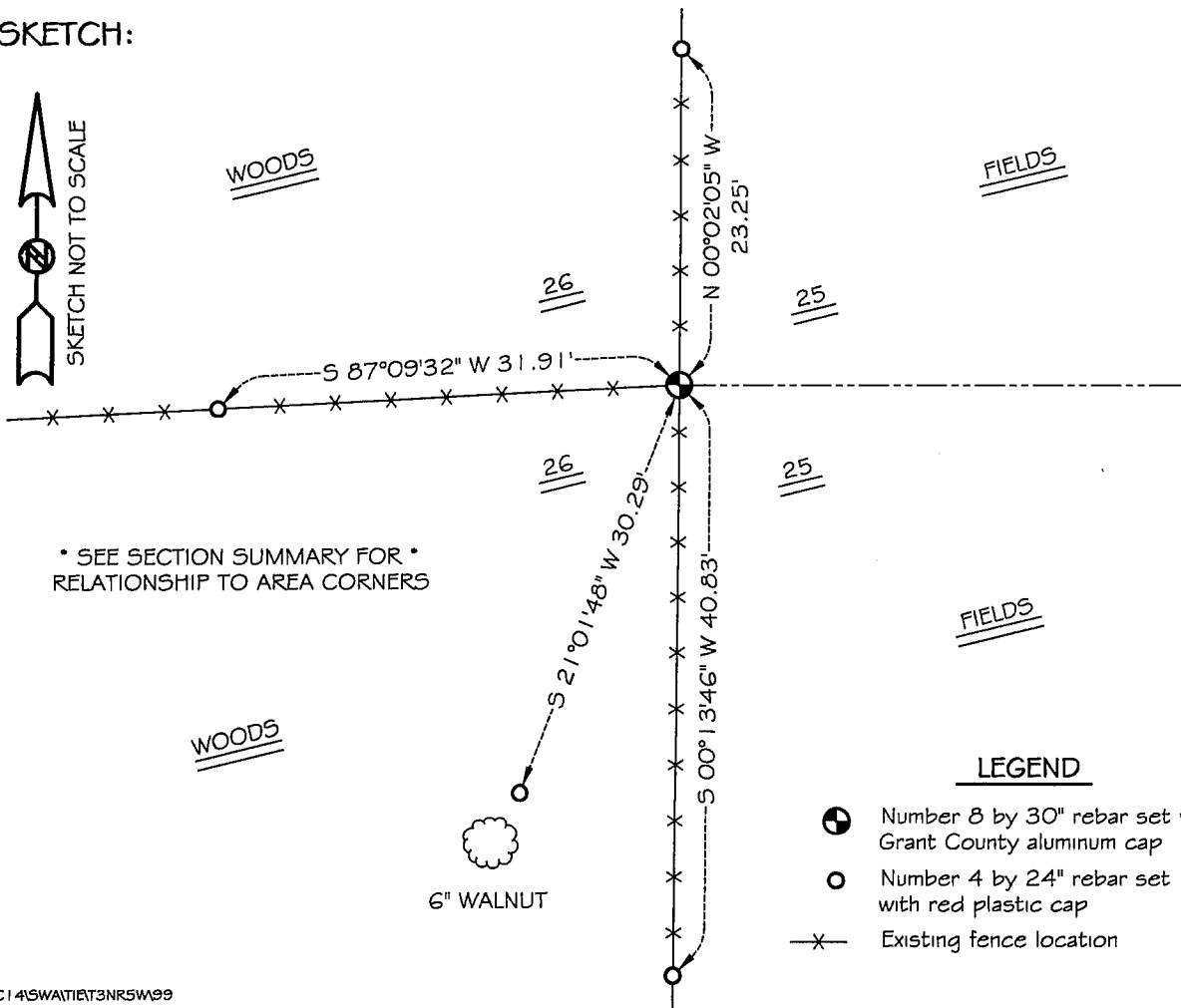
**DESCRIPTION OF CORNER EVIDENCE FOUND:**

I found no evidence to the location of J.C. Scotts survey (Bearing trees). I found an occupied fence corner and accepted its location after E.D.M. & G.P.S. traverse of the area.

**DESCRIPTION OF CORNER AND WITNESS MONUMENTS, references and accessories used to perpetuate the original or re-established location of this corner**

WITNESS TO THE CORNER LOCATION: SHANE AUSTIN & SHELBY BLINDERT

**SKETCH:**



\* SEE SECTION SUMMARY FOR \*  
RELATIONSHIP TO AREA CORNERS

**LEGEND**

- Number 8 by 30" rebar set with Grant County aluminum cap
- Number 4 by 24" rebar set with red plastic cap
- x— Existing fence location