

GRANT COUNTY CERTIFIED LAND CORNER

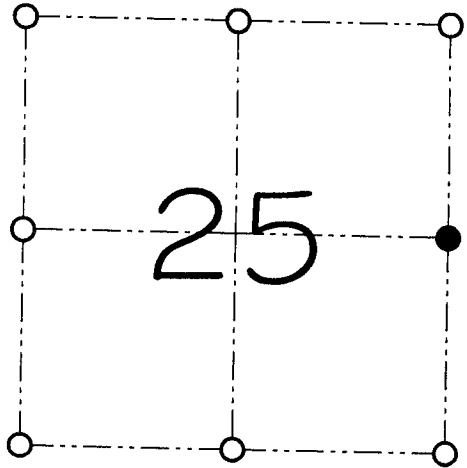
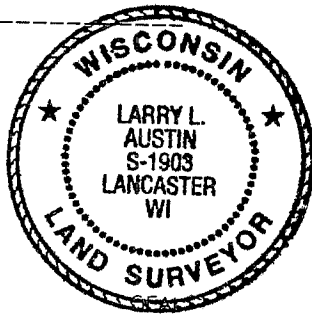
CORNER NUMBER 100

CERTIFICATE:

I, Larry L. Austin, do hereby certify that on the 7th day of July, 2000, I found no evidence of the East 1/4 corner of Section 25, Town 3 North, Range 5 West, of the 4th Principal Meridian, and I re-established said corner according to the Wisconsin statutes as shown and described hereon.

Dated this 28th day of July, 2000

Larry L. Austin
Larry L. Austin S-1903



● = CORNER LOCATION

EAST 1/4 CORNER OF
SECTION 25, T 3 N R 5 W
TOWN OF CASSVILLE

HISTORY OF ORIGINAL CORNER ESTABLISHMENT:

Corner was originally set in 1832 by Lucius Lyon.
Barber and Wilson tied to the corner on different occasions.

DESCRIPTION OF CORNER EVIDENCE FOUND:

I found an occupied West 1/4 corner of Section 30 and set the East 1/4 corner of Section 25 at the proportioned offset. Verified it's location using EDM & GPS methods.

DESCRIPTION OF CORNER AND WITNESS MONUMENTS, references and accessories used to perpetuate the original or re-established location of this corner

WITNESS TO THE CORNER LOCATION: SHANE AUSTIN & BOBBY SEDGWICK

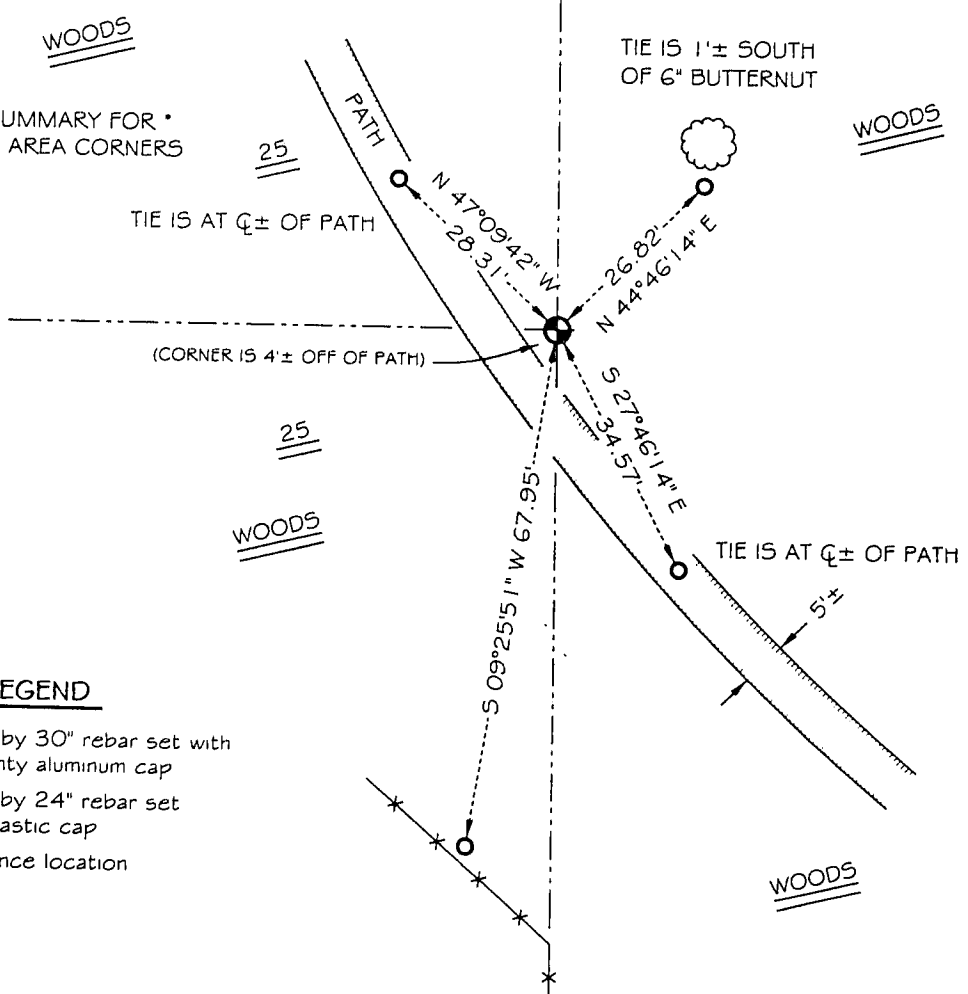
SKETCH:

• SEE SECTION SUMMARY FOR •
RELATIONSHIP TO AREA CORNERS



LEGEND

- Number 8 by 30" rebar set with Grant County aluminum cap
- Number 4 by 24" rebar set with red plastic cap
- *— Existing fence location

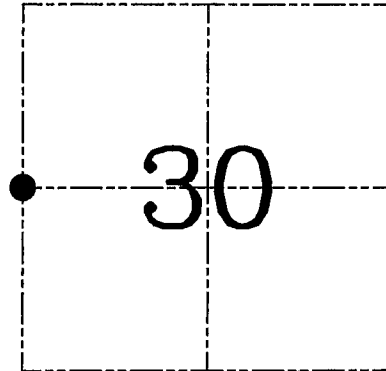
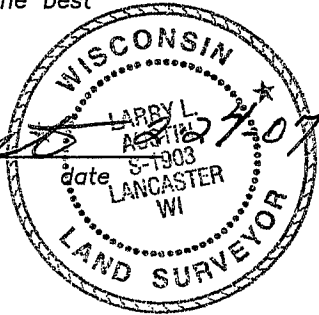


U.S. PUBLIC LAND SURVEY MONUMENT RECORD – GRANT COUNTY, WI
Section 30, Town 3 North Range 4 West, Town of Waterloo

CERTIFICATE

I, Larry L. Austin, do hereby certify that the corner location on this record was determined by me and/or under my direct supervision and that this U.S. public land survey monument record is correct and complete to the best of my knowledge and belief.

Larry L. Austin
 Larry L. Austin, S-1903



● = CORNER LOCATION

HISTORY OF CORNER ESTABLISHMENT

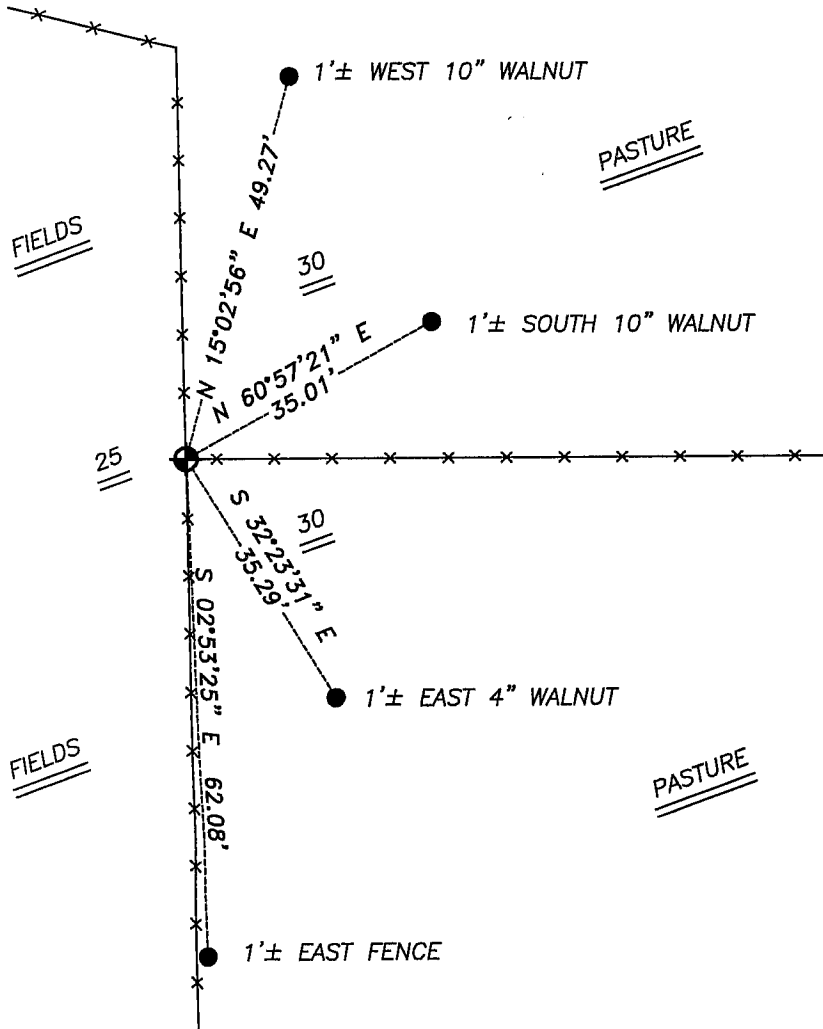
Corner was originally set. In 1984 Paul Bradshaw set a 1" iron bar. No other record of the corner was found.

DESCRIPTION OF CORNER EVIDENCE FOUND

I was unable to locate the 1" iron bar. I re-established this location based on survey data and occupational evidence of the corner. Verified this location using EDM & GPS methods.

DESCRIPTION OF CORNER AND WITNESS MONUMENTS, references and accessories used to perpetuate the original or re-established location of this corner. Witnesses to corner location Bobby Sedgwick & Brad Digman & Shane Austin

SKETCH:



LEGEND

- ⊕ Number 8 x 30" rebar set with Grant County Aluminum cap
- Number 4 x 24" Rebar set with red plastic "TIE" cap
- x— Approximate existing fence

Austin Engineering LLC
 4211 HWY 81 E, LANCASTER, WI 53813
 PHONE 608-723-6363 FAX 608-723-6702

JOB NUMBER 06S130
 FIELDBOOK: TDSR
 G:\T3NR4W\31
 H:\TIE\T3NR4W\94

DRAWN BY: SW AUSTIN
 APPROVED: LL AUSTIN

SKETCH NOT TO SCALE